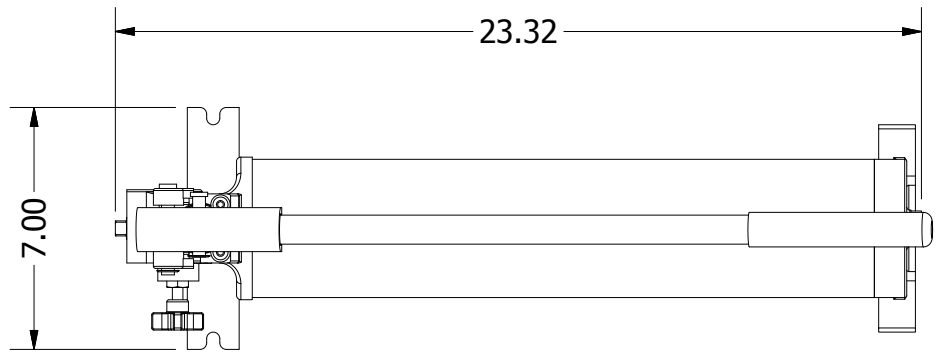


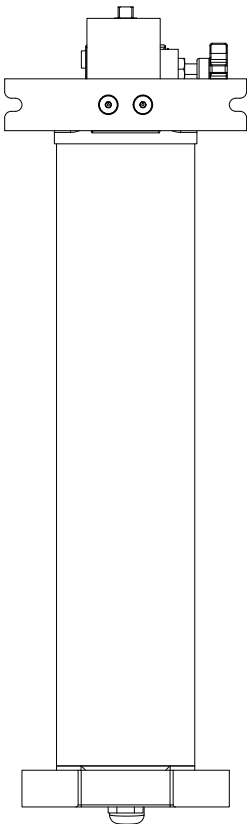
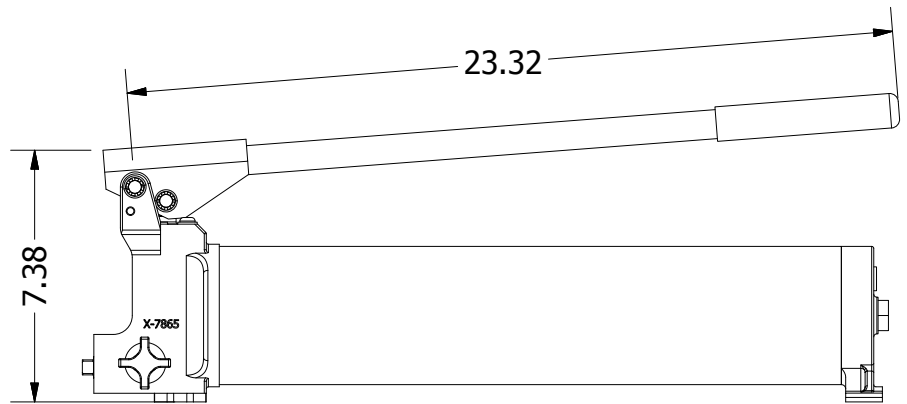
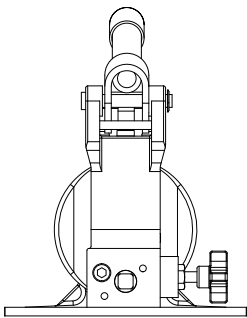
2

1



B

B



A

A

2

1

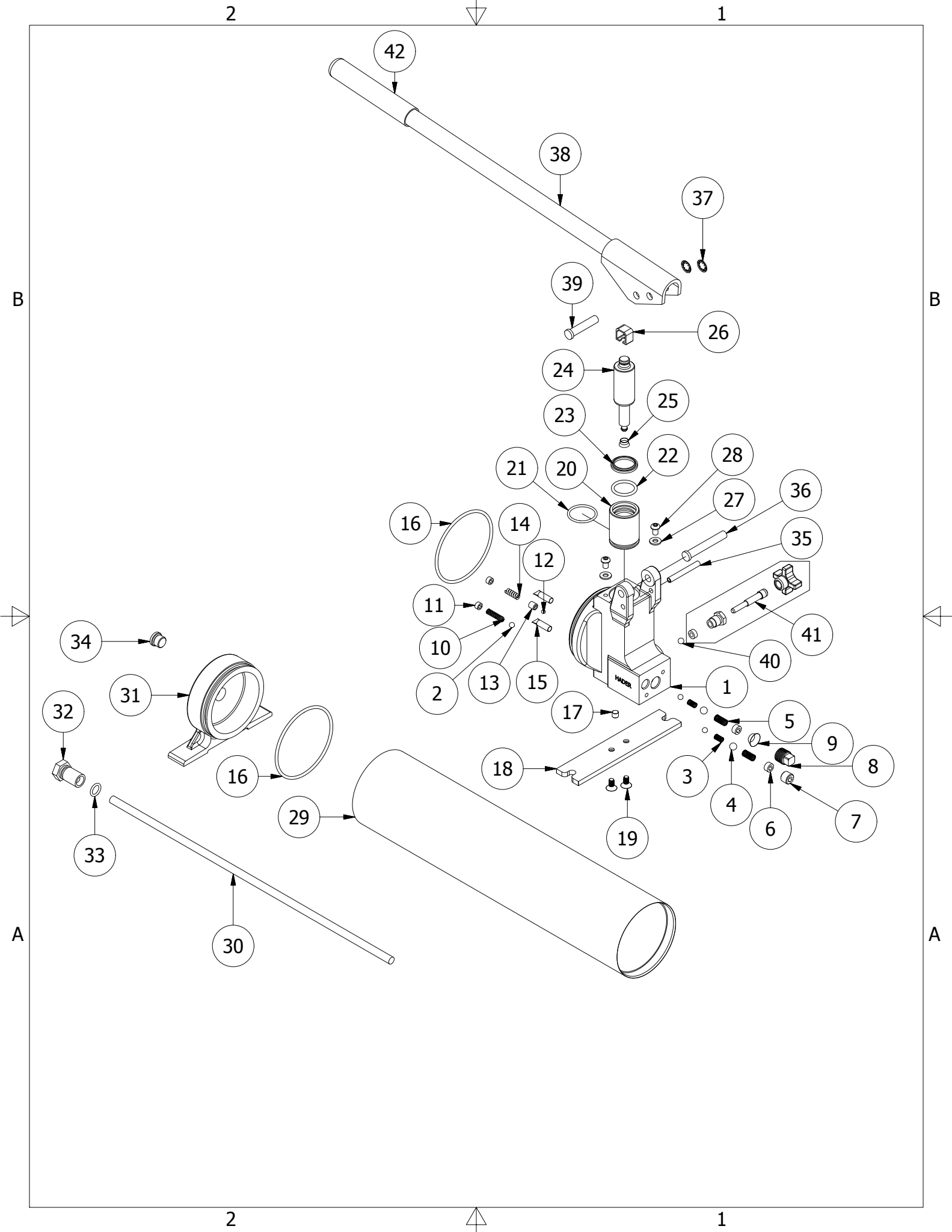
THIS DRAWING IS THE PROPERTY OF RAM-PAC INT'L AND IS NOT TO BE USED IN ANY MANNER DETRIMENTAL TO THEIR INTEREST

**RAM-PAC, INT'L.**  
 15600 W. LINCOLN AVE.  
 NEW BERLIN, WI 53151

TITLE: HP-150

REVISION: -

EST WT: 30 LBS



## REBUILD KIT: X7876

ITEM	QTY	PART NUMBER	DESCRIPTION
1	1	X-7865	PUMP BODY MACHINED
2	3	2540009	BALL .25 DIA CHROME
3	2	9925-0000	COMPRESSION SPRING
4	2	X-6028	11/32 DIAMETER BALL
5	2	X-6069-1	DISCHARGE SPRING
6	2	X-6406	SOCKET HEAD JAM SCREW
7	1	2470334	SOCKET HEAD PIPE PLUG
B 8	1	2470172	FITTING PLUG
9	1	X-6483	OIL FILTER SCREEN
10	1	X-6425	BY PASS SPRING (LP)
11	2	H-2985	SOCKET HEAD JAM SCREW
12	1	9904-0190	3/16 CHECK BALL
13	1	1642-9602	SPRING CAP
14	1	9925-0002	SPRING COMPRESSION
15	2	221318	INTAKE FILTER
16	2	X-6477-53	O-RING
17	1	2470329	PIPE PLUG
18	1	X-7868-HT	MOUNTING STRAP
19	2	S-9-20	FLAT HD MACHINE SCREW
20	1	X-7866	BRONZE BUSHING
21	1	X-6477-88	O-RING
22	1	X-6477-2	O-RING 1.25 X .984 X .139CS
23	1	X-6907-7	WIPER RINGS
24	1	X-7867	PLUNGER
25	1	X-7011-3	U-CUP
26	1	X-6404F	PUMP CLIP
27	2	2360116	WASHER
28	2	H-2963	BHCS
29	1	X-7058	RESERVOIR TUBE
30	1	X-7061	CONNECTING ROD
31	1	X-7059	END CAP
A 32	1	X-7060	CONNECTING PLUG
33	1	X-6477-46	O-RING
34	1	2470332	ALLEN HD PIPE PLUG SAE #6
35	1	7912-4495	ROLL PIN .25 DIA X 2.0
36	1	X-6414-4	PIVOT PIN
37	2	X-6415-1	PUSH-ON RET. RING (5115 037.010)
38	1	X-7138-1-A	SOCKET & HANDLE ASSY
39	1	X-6414-1	PIVOT PIN
40	1	X-7873	9/32 BALL
41	1	81102-150	BLEEDER STEM ASSEMBLY
42	1	9960-0875	HAND PUMP GRIP