

2

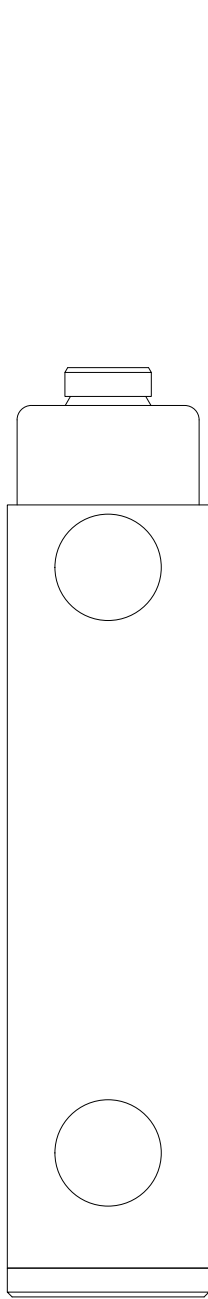
1

B

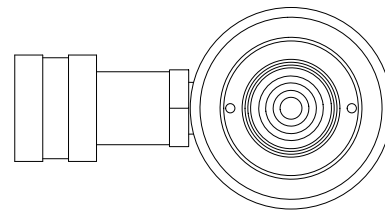
B

A

A



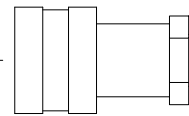
RETRACTED 12.10 IN
EXTENDED 18.10 IN



Ø1.13
ROD

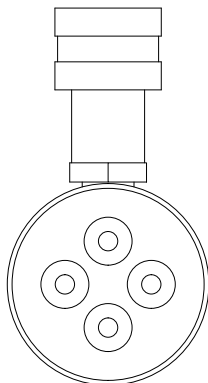
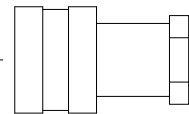
2 1/4-14 UNS - 2A

2.00



Ø2.63
HOUSING

1.88



2

1

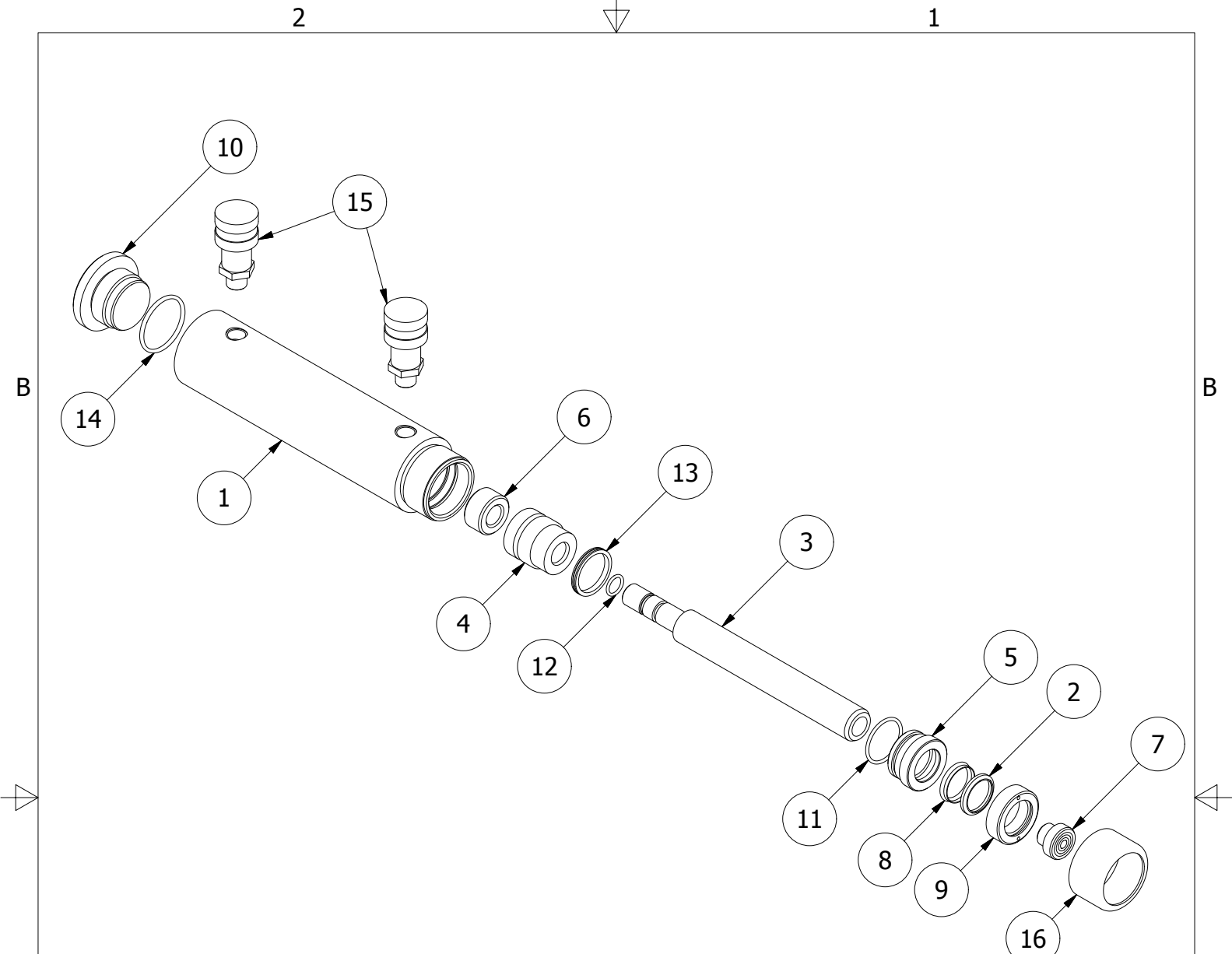
THIS DRAWING IS THE PROPERTY OF RAM-PAC INT'L AND IS NOT TO BE USED IN ANY MANNER DETRIMENTAL TO THEIR INTEREST

RAM-PAC, INT'L.
15600 W. LINCOLN AVE.
NEW BERLIN, WI 53151

TITLE: 10 TON 6 IN STROKE CYL

REVISION: -

EST WT: 20 LBS



REBUILD KIT: X7067

ITEM	QTY	PART NUMBER	DESCRIPTION
1	1	X-6901-6	CYLINDER
2	1	X-6907-1	WIPER RINGS
3	1	X-6902-6	RAM PLUNGER
4	1	X-6903	PLUNGER GUIDE RING 10 TON
5	1	X-6904	GLAND RING 10 TON
6	1	X-6905	RETAINING NUT
7	1	X-6906	PLUNGER TOP
8	1	X-7011-7	U-CUP
9	1	X-8160	GLAND NUT
10	1	X-6900	RAM BASE
11	1	X-6477-35	O-RING
12	1	X-6477-31	O-RING
13	1	X-6437-1	G.T. RING (PISTION TYPE)
14	1	2190024	O-RING
15	2	HA-18	COUPLER W/ DUST COVER
16	1	X-9389	THREAD PROTECTOR