

Ø1.43
ROD

2 1/4-14 UNS-2A

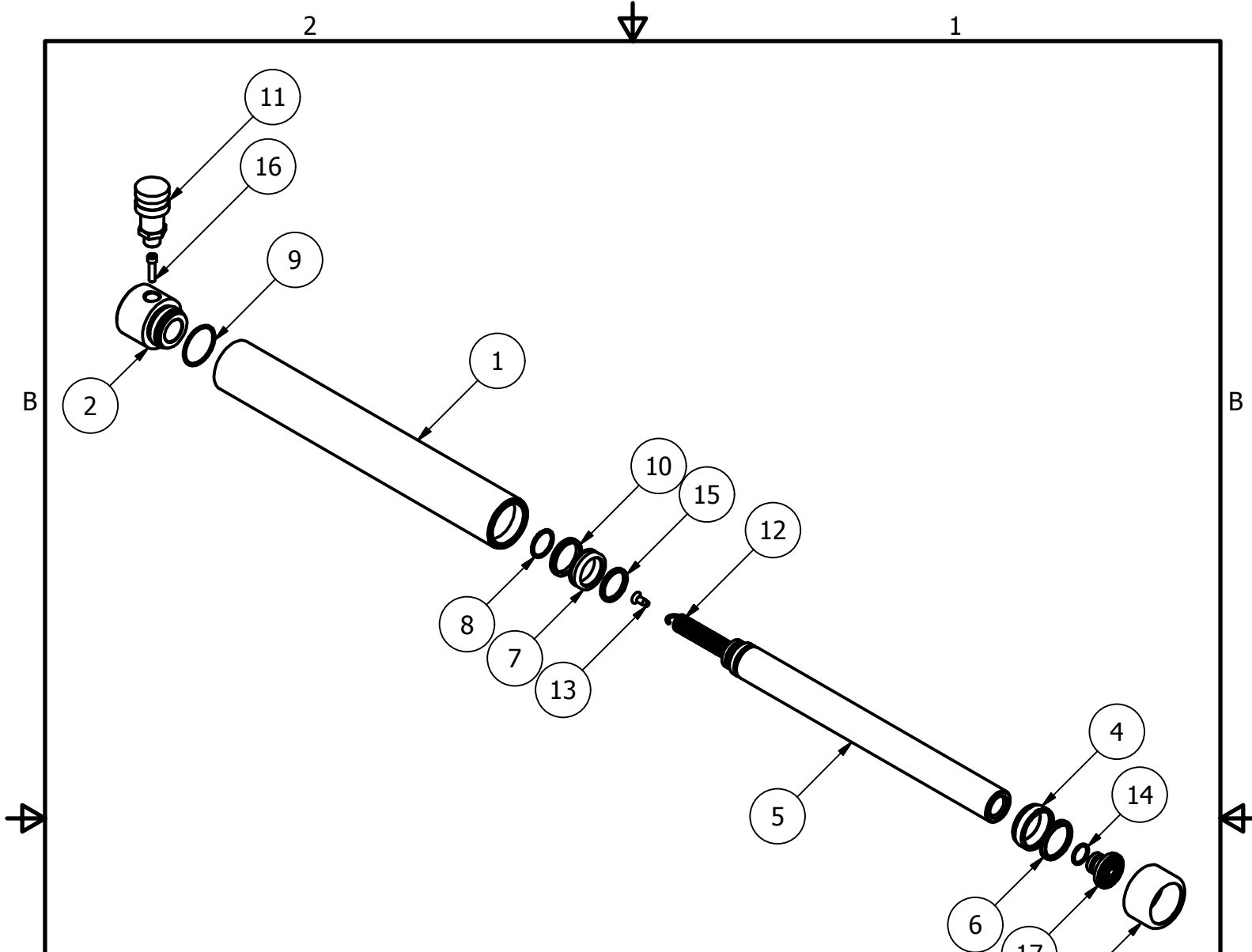
1.25

Ø2.25
HOUSING

RETRACTED 18.00 IN
EXTENDED 32.00 IN

1.00

THIS DRAWING IS THE PROPERTY OF RAM-PAC INT'L AND IS NOT TO BE USED IN ANY MANNER DETRIMENTAL TO THEIR INTEREST	
RAM-PAC, INT'L. 15600 W. LINCOLN AVE. NEW BERLIN, WI 53151	
TITLE:	10 TON 14 IN STROKE CYL
REVISION:	-
EST WT:	22 LBS



ITEM	QTY	PART NUMBER	DESCRIPTION
1	1	X-9210-14	CYLINDER HOUSING
2	1	X-7186	CYLINDER BASE
3	1	X-9389	THREAD PROTECTOR
4	1	X-8186-1	GLAND NUT
5	1	X-9211-14	PLUNGER
6	1	X-6907-9	WIPER RINGS
7	1	X-6678-1	BRONZE WEAR RING
8	1	X-6477-44	O-RING
9	1	X-6477-17	O-RING
10	1	X-6437-1	G.T. RING (PISTION TYPE)
11	1	HA-18	COUPLER W/ DUST COVER
12	1	9926-0001	EXTENSION SPRING
13	1	8321-9140	SELF TAPPING SCREW
14	1	7511-3270	O-RING
15	1	2480155	STOP RING
16	1	2220551	SHCS 1/4 - 20 UNC-2A X 1.00
17	1	1652-2304-OX	RAM PLUNGER HEAD