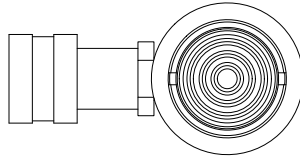


2

1



$\text{Ø}1.43$
ROD

2 1/4-14 UNS - 2A

1.25

B

B

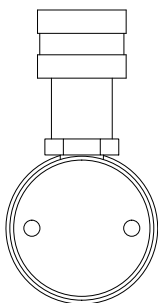
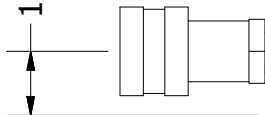
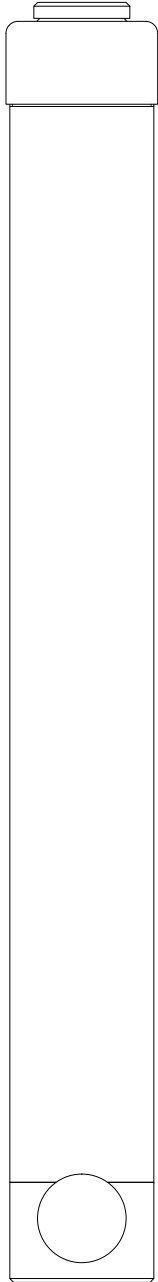
RETRACTED 20.00 IN
EXTENDED 36.00 IN

$\text{Ø}2.25$
HOUSING

1.00

A

A



2

1

THIS DRAWING IS THE PROPERTY OF RAM-PAC INT'L AND IS NOT TO BE USED IN ANY MANNER DETRIMENTAL TO THEIR INTEREST

RAM-PAC, INT'L.
15600 W. LINCOLN AVE.
NEW BERLIN, WI 53151

TITLE: 10 TON 16 IN STROKE CYL

REVISION: -

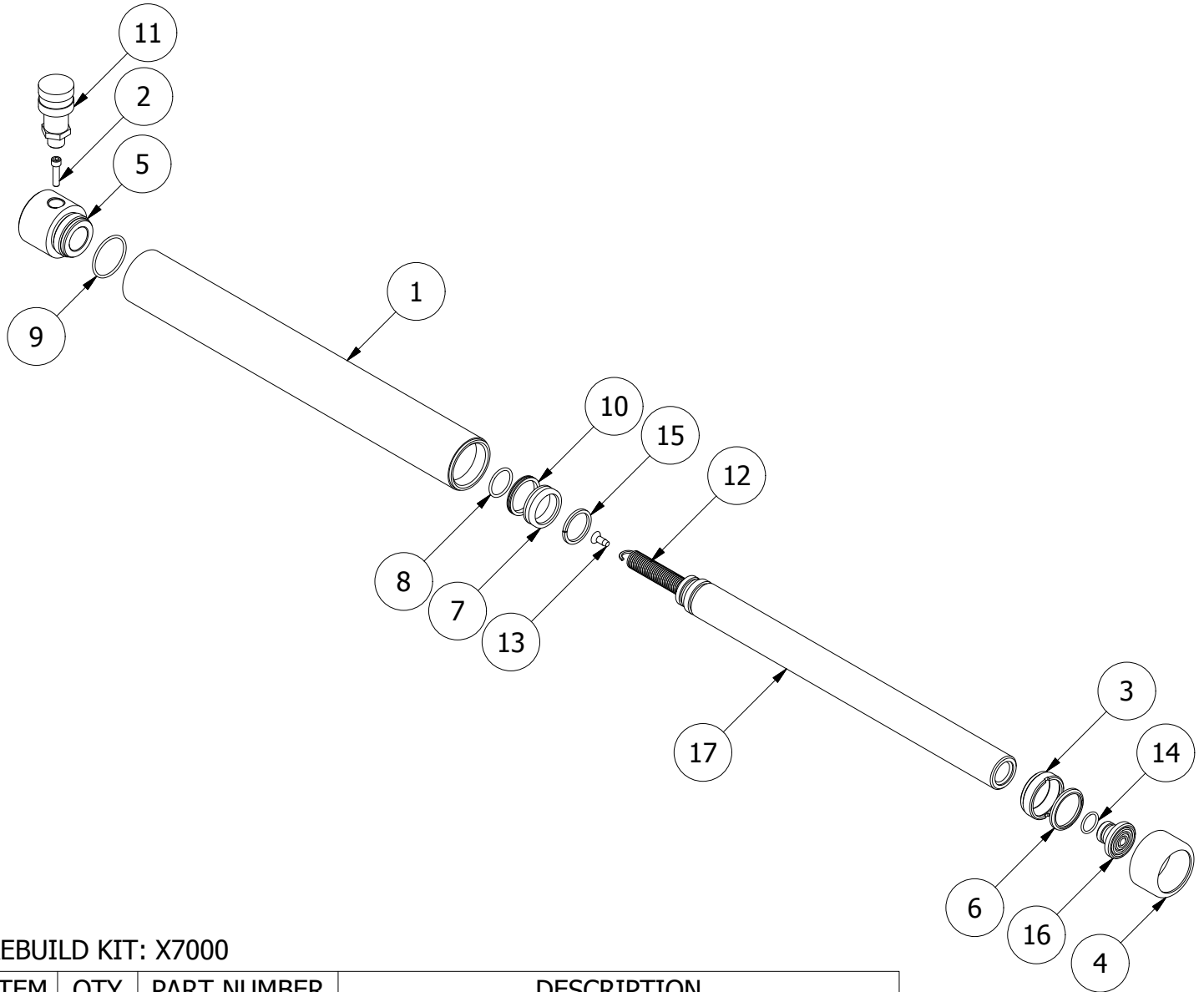
EST WT: 25 LBS

2

1

B

B



REBUILD KIT: X7000

ITEM	QTY	PART NUMBER	DESCRIPTION
1	1	X-9210-16	CYLINDER HOUSING
2	1	2220551	SHCS 1/4 - 20 UNC-2A X 1.00
3	1	X-8186-1	GLAND NUT
4	1	X-9389	THREAD PROTECTOR
5	1	X-7186	CYLINDER BASE
6	1	X-6907-9	WIPER RINGS
7	1	X-6678-1	BRONZE WEAR RING
8	1	X-6477-44	O-RING
9	1	X-6477-17	O-RING
10	1	X-6437-1	G.T. RING (PISTION TYPE)
11	1	HA-18	COUPLER W/ DUST COVER
12	1	9926-0001	EXTENSION SPRING
13	1	8321-9140	SELF TAPPING SCREW
14	1	7511-3270	O-RING
15	1	2480155	STOP RING
16	1	1652-2304-OX	RAM PLUNGER HEAD
17	1	X-9211-16	RAM CYLINDER

2

1

A

A