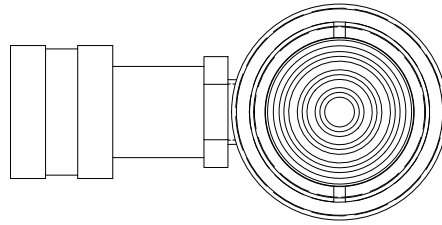


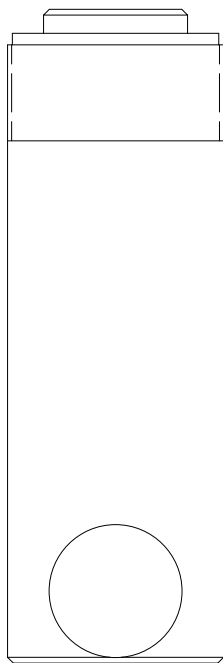
2

1



B

B



2 1/4-14 UNS - 2A

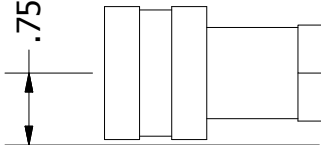
Ø2.25 HOUSING

Ø1.54 ROD

1.12

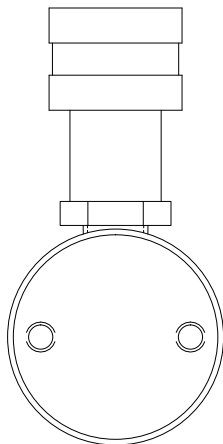
RETRACTED 6.81 IN
EXTENDED 10.81 IN

.75



A

A



2

1

THIS DRAWING IS THE PROPERTY OF RAM-PAC INT'L AND IS NOT TO BE USED IN ANY MANNER DETRIMENTAL TO THEIR INTEREST

RAM-PAC, INT'L.
15600 W. LINCOLN AVE.
NEW BERLIN, WI 53151

TITLE: 10 TON 4 IN STROKE CYL

REVISION: -

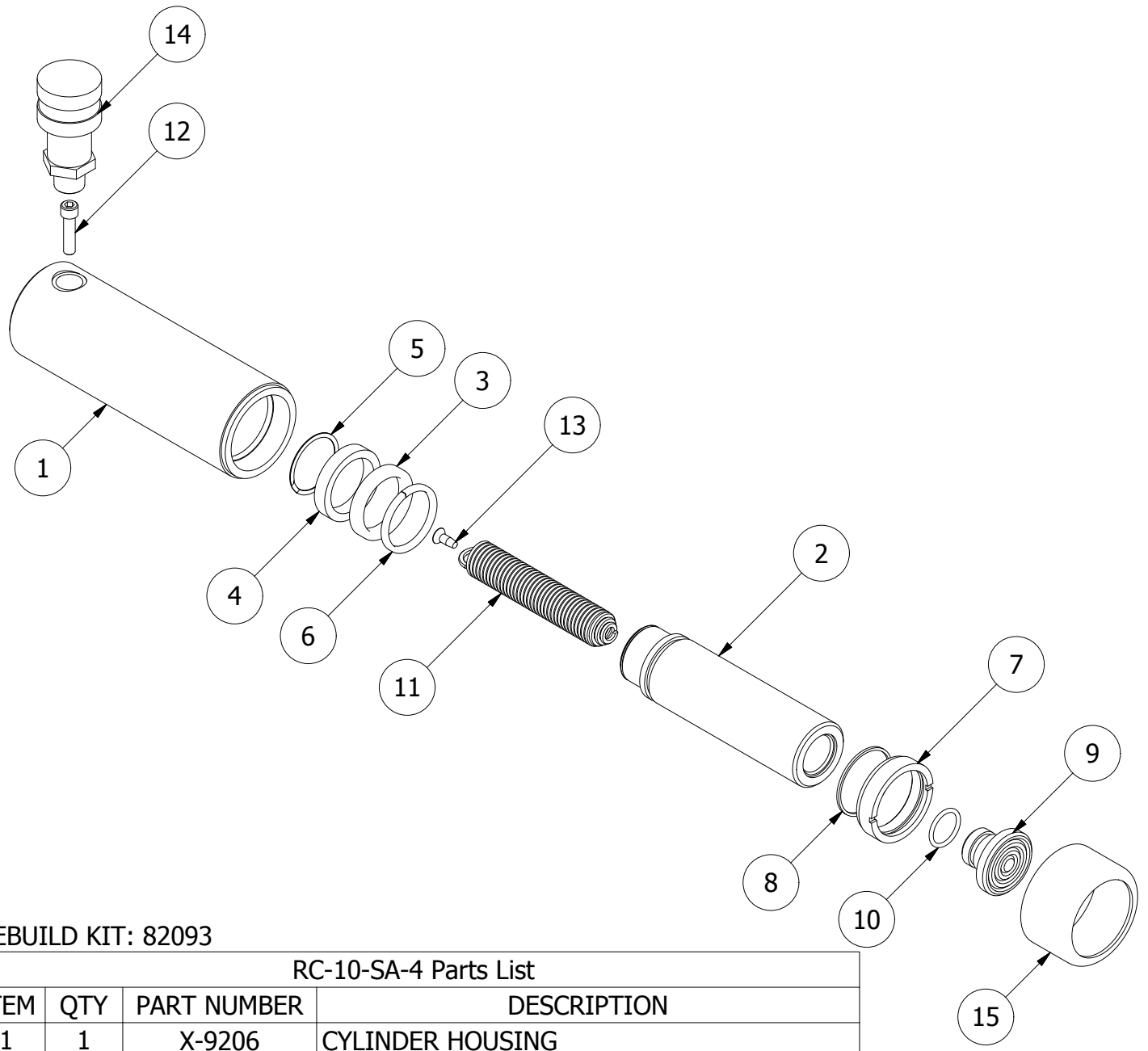
EST WT: 7 LBS

2

1

B

B



REBUILD KIT: 82093

RC-10-SA-4 Parts List

ITEM	QTY	PART NUMBER	DESCRIPTION
1	1	X-9206	CYLINDER HOUSING
2	1	X-9205	PLUNGER
3	1	7083-1420-1	BEARING
4	1	7132-9350	U-CUP
5	1	7730-1125	RETAINING RING (WS-131)
6	1	7750-1438	STOP RING
7	1	1652-2203-1	GLAND NUT
8	1	7402-9170	QUAD RING
9	1	1652-2304	SADDLE
10	1	7511-3270	O-RING
11	1	X-9207 ASSY	EXTENSION SPRING
12	1	2220551	SHCS 1/4 - 20 X 1.00
13	1	8321-5081	SELF-TAPPING SCREW #10-24 X .5
14	1	HA-18	COUPLER W/ DUST COVER
15	1	X-9389	THREAD PROTECTOR

A

A

2

1