

$\varnothing 1.42$
 ROD

$2 \frac{1}{4}$ -14 UNS - 2A

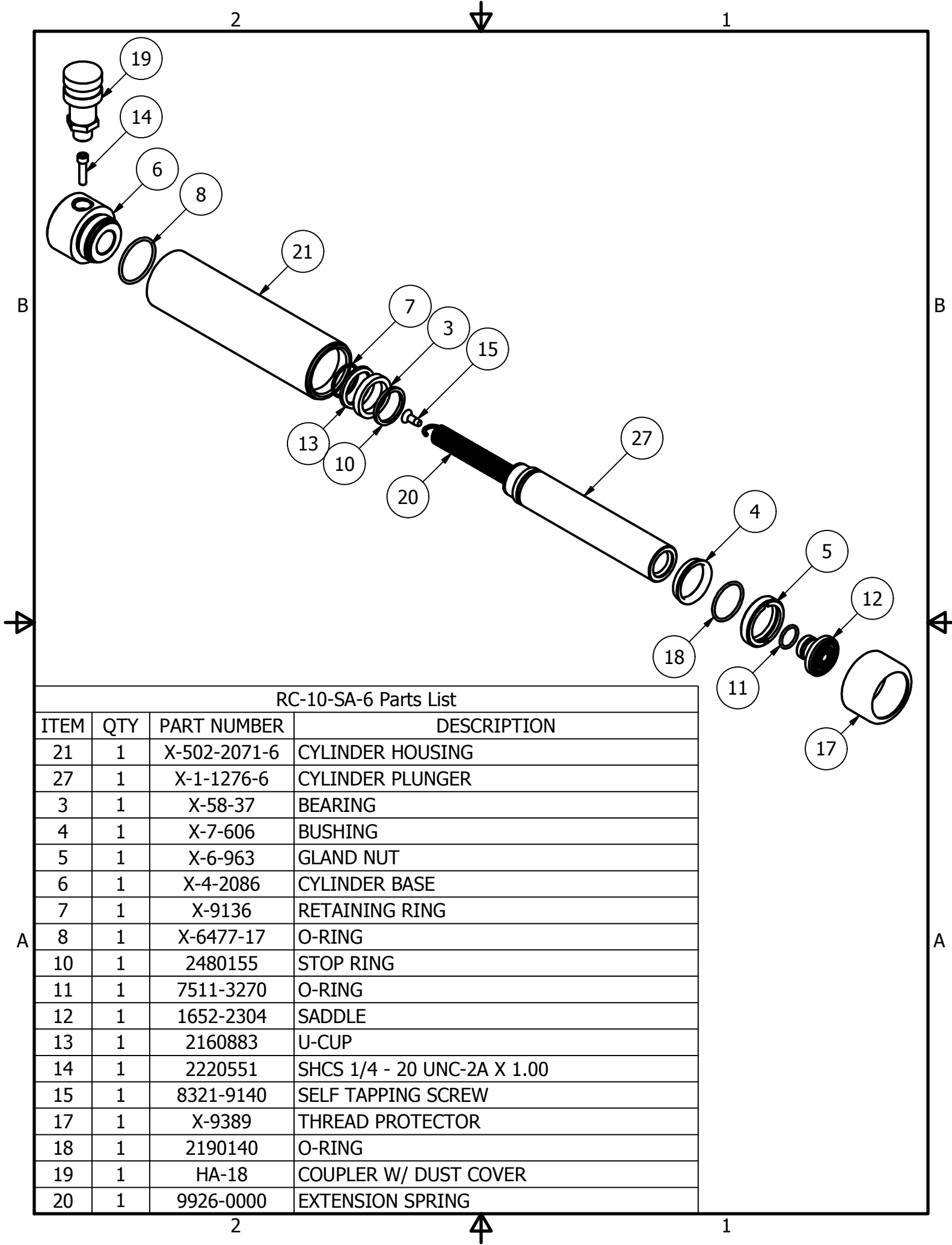
$\varnothing 2.25$
 HOUSING

1.25

RETRACTED 9.74 IN
 EXTENDED 15.74 IN

.75

<small>THIS DRAWING IS THE PROPERTY OF RAM-PAC INT'L AND IS NOT TO BE USED IN ANY MANNER DETRIMENTAL TO THEIR INTEREST</small>	
RAM-PAC, INT'L. 15600 W. LINCOLN AVE. NEW BERLIN, WI 53151	
TITLE:	10 TON 6 IN STROKE CYL
REVISION:	-
EST WT:	9.5 LBS



RC-10-SA-6 Parts List

ITEM	QTY	PART NUMBER	DESCRIPTION
21	1	X-502-2071-6	CYLINDER HOUSING
27	1	X-1-1276-6	CYLINDER PLUNGER
3	1	X-58-37	BEARING
4	1	X-7-606	BUSHING
5	1	X-6-963	GLAND NUT
6	1	X-4-2086	CYLINDER BASE
7	1	X-9136	RETAINING RING
8	1	X-6477-17	O-RING
10	1	2480155	STOP RING
11	1	7511-3270	O-RING
12	1	1652-2304	SADDLE
13	1	2160883	U-CUP
14	1	2220551	SHCS 1/4 - 20 UNC-2A X 1.00
15	1	8321-9140	SELF TAPPING SCREW
17	1	X-9389	THREAD PROTECTOR
18	1	2190140	O-RING
19	1	HA-18	COUPLER W/ DUST COVER
20	1	9926-0000	EXTENSION SPRING