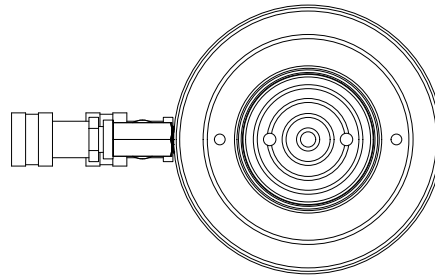


2

1



Ø3.63  
ROD

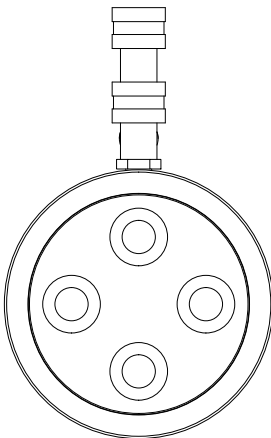
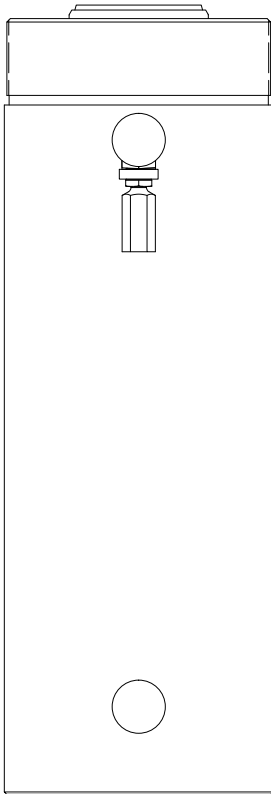
6 7/8-12 UN - 2A

3.16

RETRACTED 20.55 IN  
EXTENDED 33.55 IN

Ø7.00  
HOUSING

2.28



THIS DRAWING IS THE PROPERTY OF RAM-PAC INT'L AND IS NOT TO BE USED IN ANY MANNER DETRIMENTAL TO THEIR INTEREST

**RAM-PAC, INT'L.**  
15600 W. LINCOLN AVE.  
NEW BERLIN, WI 53151

**TITLE: 100 TON 13 IN STROKE CYL**

**REVISION: -**

**EST WT: 182 LBS**

2

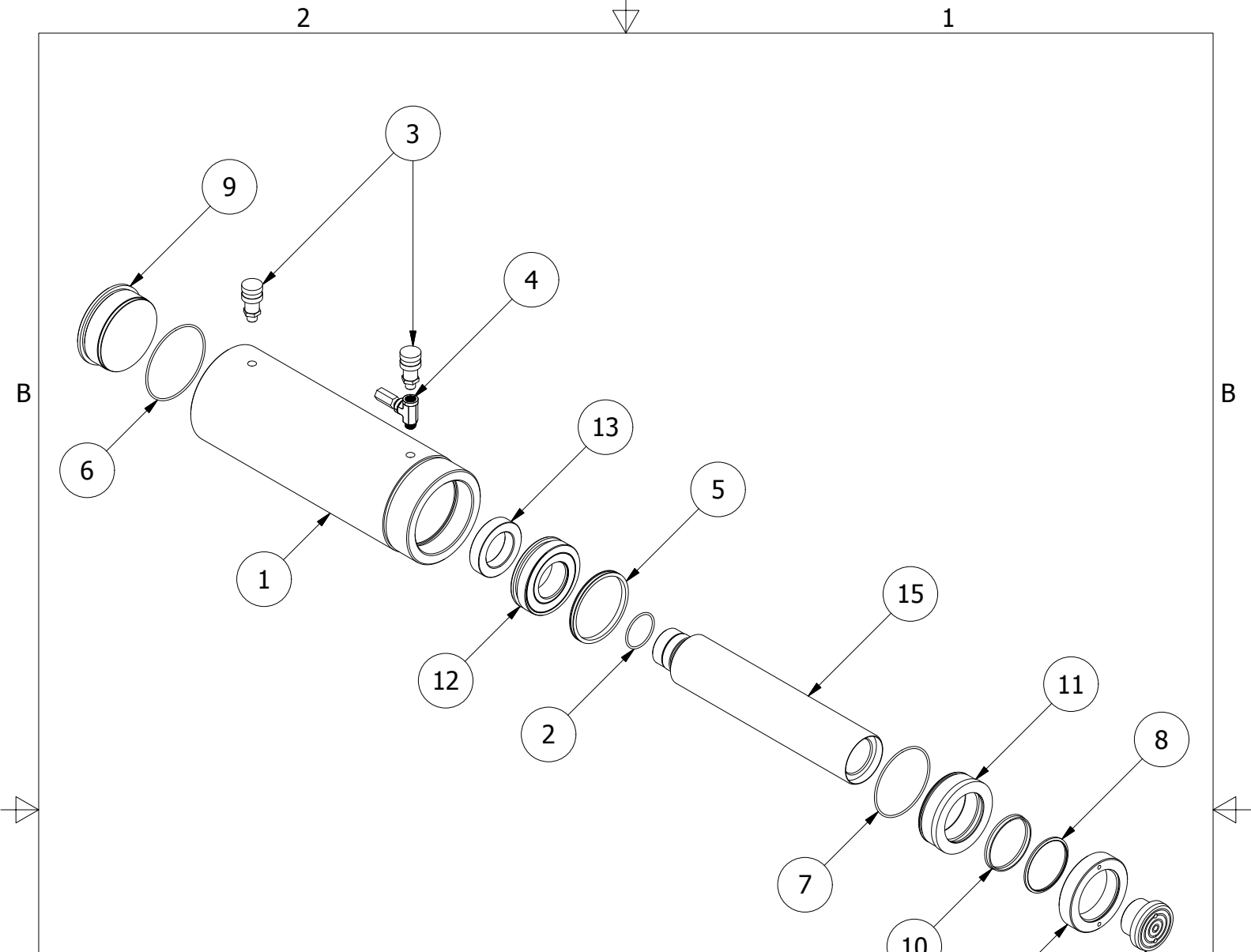
1

B

B

A

A



REBUILD KIT: X7071-A

ITEM	QTY	PART NUMBER	DESCRIPTION
1	1	X-7106-NEW-1	RAM CYLINDER
2	1	2190113	O-RING 2.625 X 2.359 X .139 70D
3	2	HA-18	COUPLER W/ DUST COVER
4	1	HRV-2	PRESSURE RELIEF VALVE
5	1	X-6437-5	G.T. RING (PISTION TYPE)
6	1	X-6477-16	O-RING 5.500 X 5.234 X .139 90D
7	1	X-6477-41	O-RING 5.125 X 4.875 X .139 90D
8	1	X-6907-5	WIPER RINGS
9	1	X-6928	RAM BASE
10	1	X-7011-6	U-CUP
11	1	X-7109	GLAND RING
12	1	X-7111	PLUNGER GUIDE RING
13	1	X-7112	RETAINING NUT
14	1	X-8165	GLAND NUT
15	1	X-8166-NEW-1	RAM PLUNGER
16	1	X-8172	PLUNGER TOP