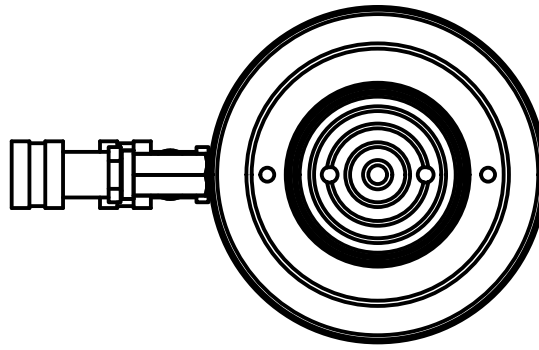


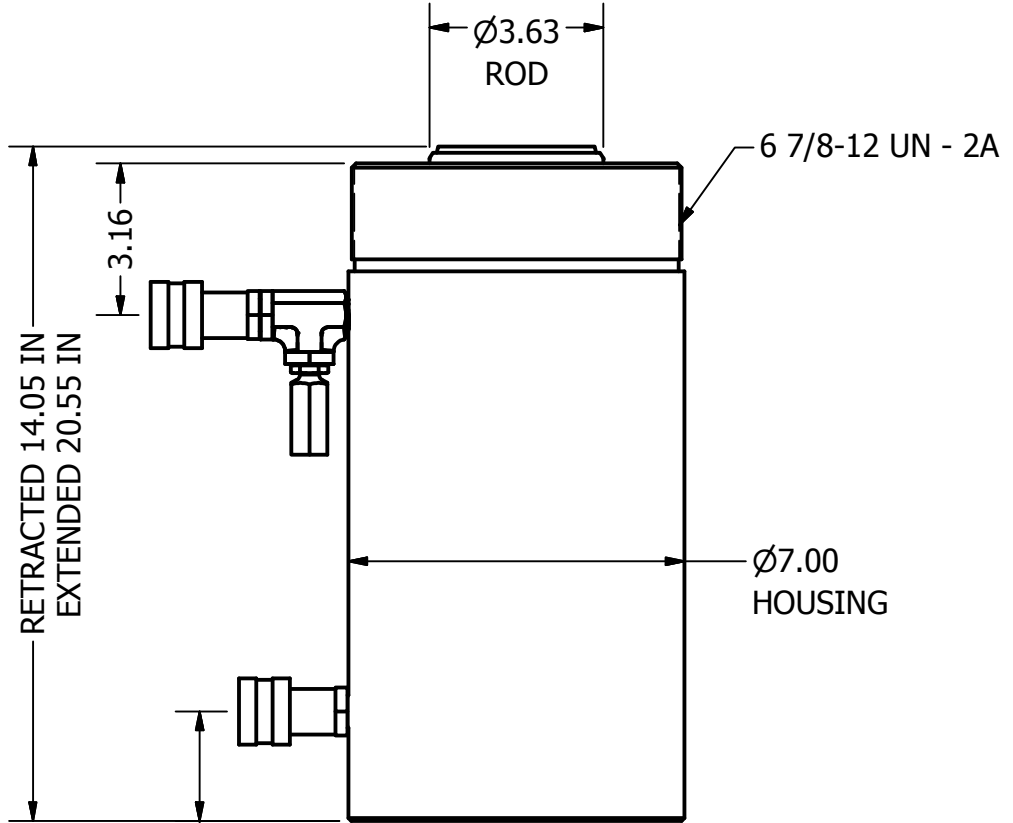
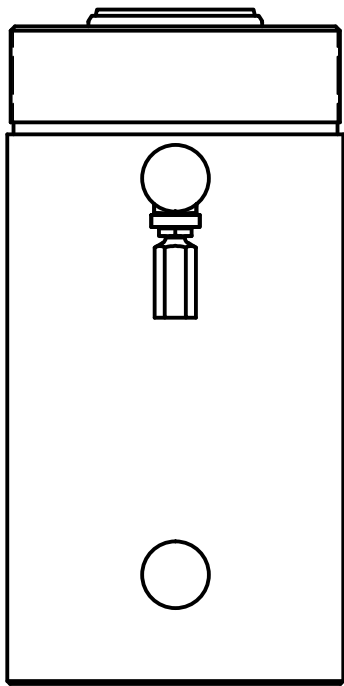
2

1



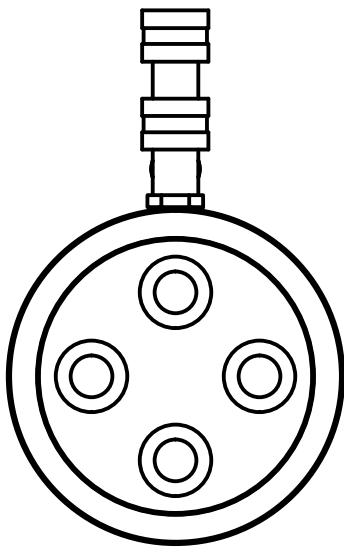
B

B



A

A



A

A

2

1

THIS DRAWING IS THE PROPERTY OF RAM-PAC INT'L AND IS NOT TO BE USED IN ANY MANNER DETRIMENTAL TO THEIR INTEREST

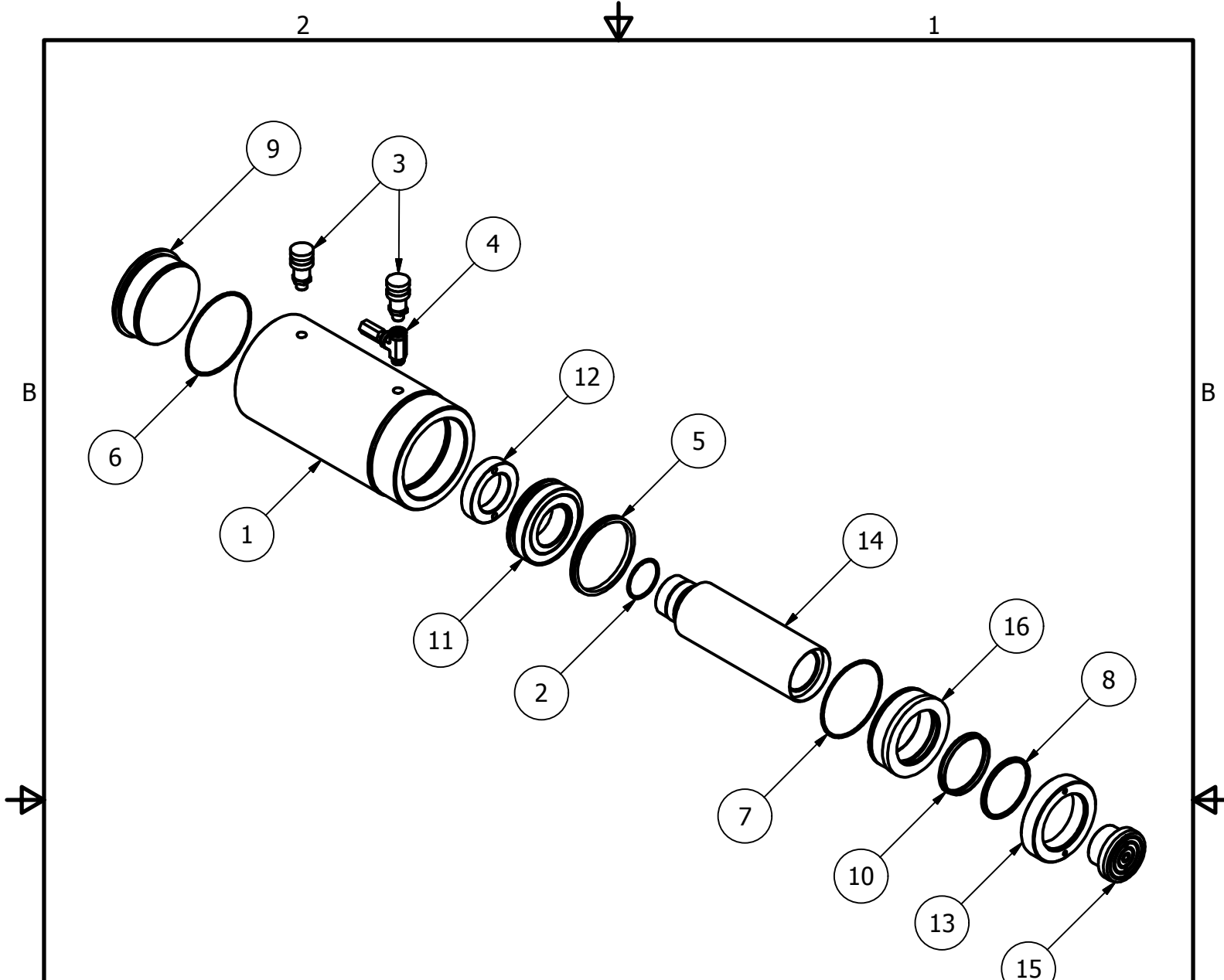
RAM-PAC, INT'L.
 15600 W. LINCOLN AVE.
 NEW BERLIN, WI 53151

TITLE: 100 TON 6.5 IN STROKE CYL

REVISION: -

EST WT: 130 LBS

A



ITEM	QTY	PART NUMBER	DESCRIPTION
1	1	X-7106	RAM CYLINDER
2	1	2190113	O-RING 2.625 X 2.359 X .139 70D
3	2	HA-18	COUPLER W/ DUST COVER
4	1	HRV-2	PRESSURE RELIEF VALVE
5	1	X-6437-5	G.T. RING (PISTION TYPE)
6	1	X-6477-16	O-RING 5.500 X 5.234 X .139 90D
7	1	X-6477-41	O-RING 5.125 X 4.875 X .139 90D
8	1	X-6907-5	WIPER RINGS
9	1	X-6928	RAM BASE
10	1	X-7011-6	U-CUP
11	1	X-7111	PLUNGER GUIDE RING
12	1	X-7112	RETAINING NUT
13	1	X-8165	GLAND NUT
14	1	X-8166	RAM PLUNGER
15	1	X-8172	PLUNGER TOP
16	1	X-7109	GLAND RING