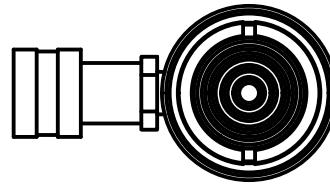


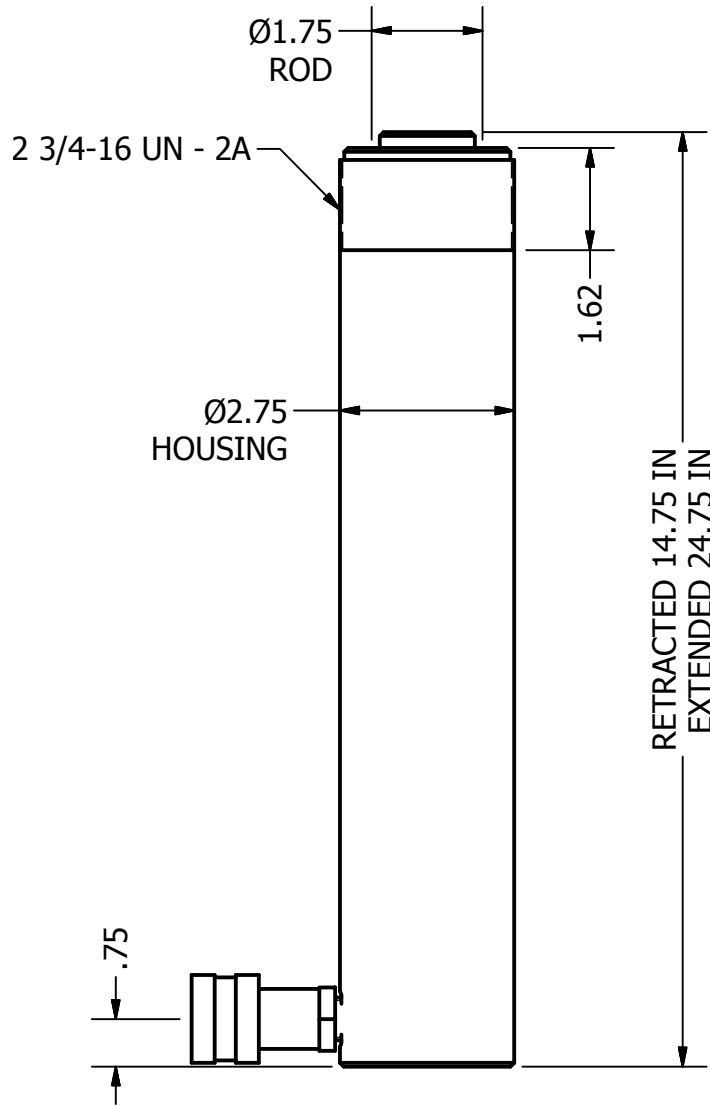
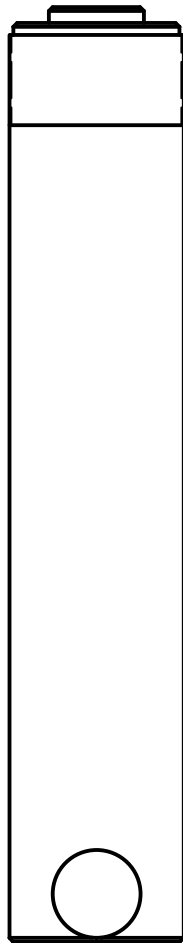
2

1



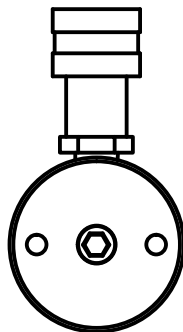
B

B



A

A



2

1



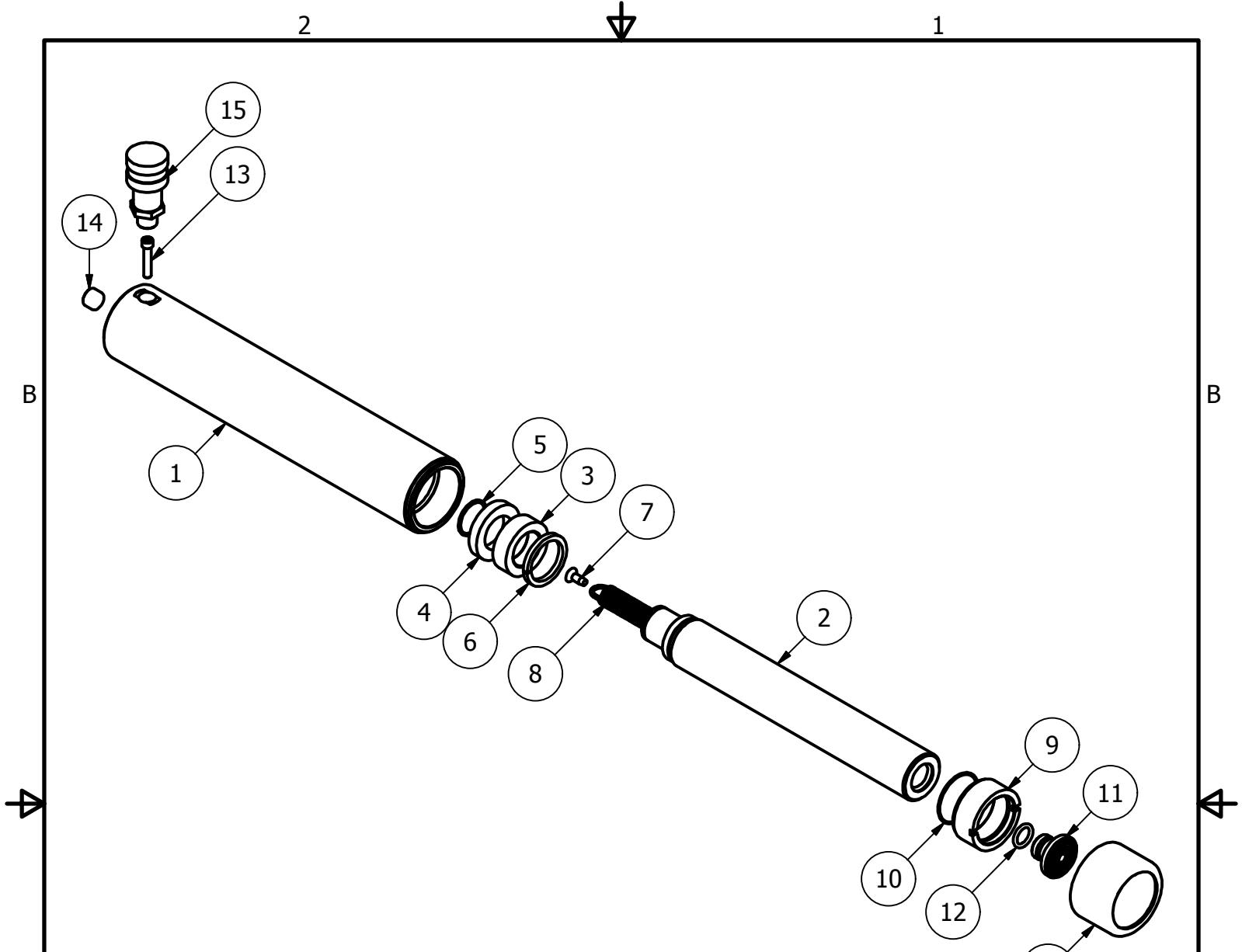
THIS DRAWING IS THE PROPERTY OF RAM-PAC INT'L AND IS NOT TO BE USED IN ANY MANNER DETRIMENTAL TO THEIR INTEREST

RAM-PAC, INT'L.
 15600 W. LINCOLN AVE.
 NEW BERLIN, WI 53151

TITLE: 15 TON 10 IN STROKE CYL

REVISION: -

EST WT: 21 LBS



RC-15-SA-10 Parts List

ITEM	QTY	PART NUMBER	DESCRIPTION
1	1	X-9162	CYLINDER
2	1	X-9169	15 TON PLUNGER
3	1	X-9166	BEARING
4	1	X-7011-24	U-CUP
5	1	X-9136	RETAINING RING
6	1	X-9165	STOP RING
7	1	8321-9140	SELF TAPPING SCREW
8	1	9926-0001	EXTENSION SPRING
13	1	X-9172	SHCS 1/4 - 20 X 1.25
9	1	X-9171	PLUNGER GUIDE
10	1	X-9174	O-RING
11	1	1652-2304	SADDLE
12	1	X-9173	O-RING
14	1	2470309	PIPE PLUG 3/8 NPTF
15	1	HA-18	COUPLER W/ DUST COVER
16	1	X-9390	THREAD PROTECTOR