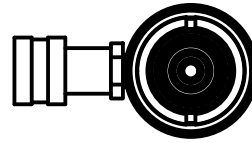


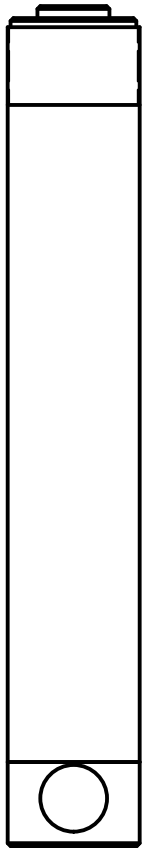
2

1



B

B



Ø1.75  
ROD

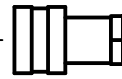
2 3/4-16 UN - 2A

1.81

Ø2.75  
HOUSING

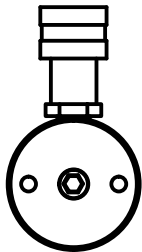
RETRACTED 17.50 IN  
EXTENDED 29.50 IN

1.00



A

A



THIS DRAWING IS THE PROPERTY OF RAM-PAC INT'L AND IS NOT TO BE USED IN ANY MANNER DETRIMENTAL TO THEIR INTEREST

RAM-PAC, INT'L.  
15600 W. LINCOLN AVE.  
NEW BERLIN, WI 53151

TITLE: 15 TON 12 IN STROKE CYL

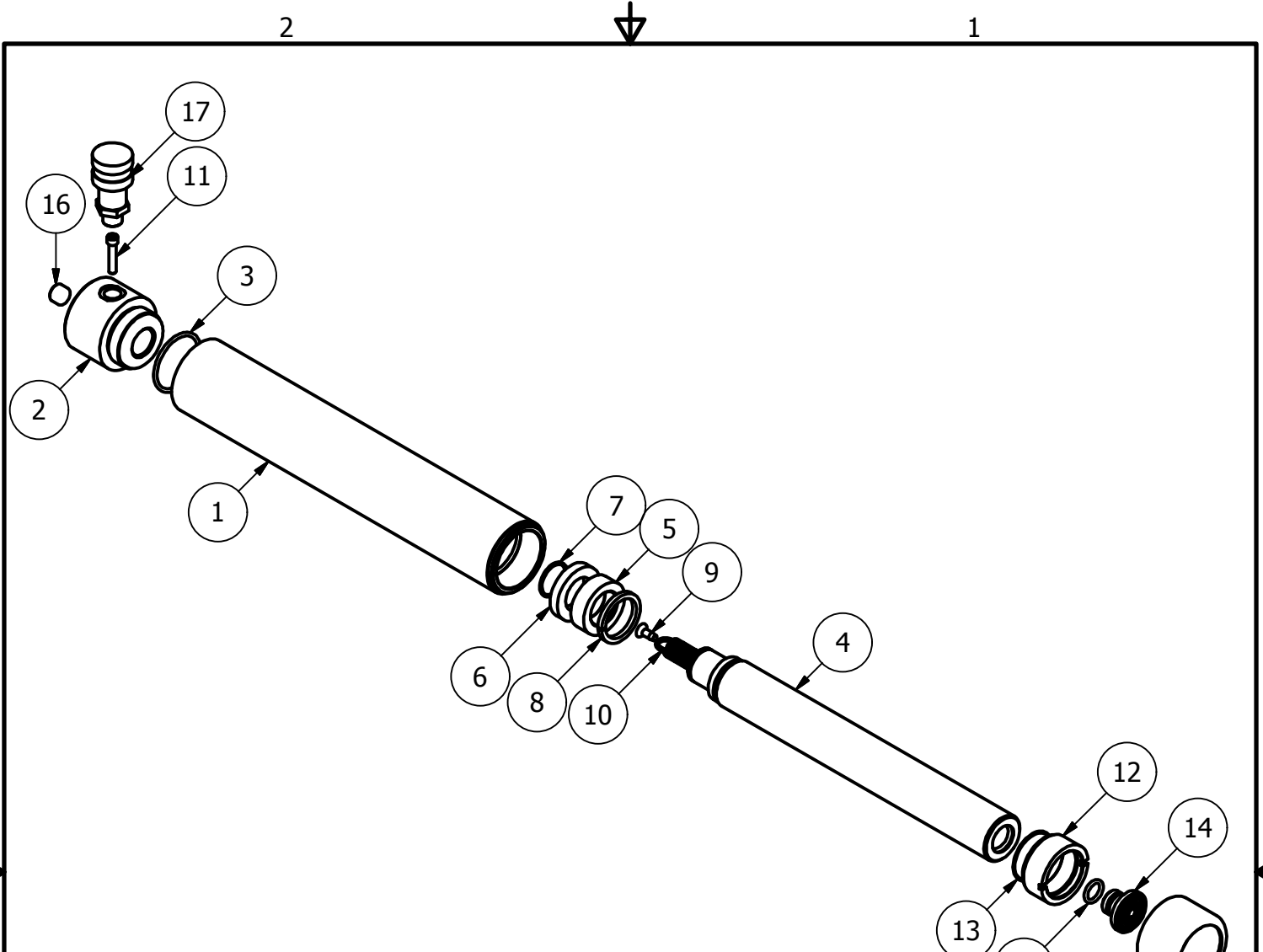
REVISION: -

EST WT: 22.3 LBS

2

1





RC-15-SA-12 Parts List

ITEM	QTY	PART NUMBER	DESCRIPTION
1	1	X-9288	15 TON CYLINDER
2	1	X-9514	BASE, 15 TON CYL
3	1	2190153	O-RING -226 2.25 2.00 .125 90D
4	1	X-9169-12	15 TON PLUNGER
5	1	X-9166	BEARING
6	1	X-7011-24	U-CUP
7	1	X-9136	RETAINING RING
8	1	X-9165	STOP RING
9	1	8321-9140	SELF TAPPING SCREW
10	1	9926-0001	EXTENSION SPRING
11	1	X-9172	SHCS 1/4 - 20 X 1.25
12	1	X-9171	PLUNGER GUIDE
13	1	X-9174	O-RING
14	1	1652-2304	SADDLE
15	1	X-9173	O-RING
16	1	2470309	PIPE PLUG 3/8 NPTF
17	1	HA-18	COUPLER W/ DUST COVER
18	1	X-9390	THREAD PROTECTOR