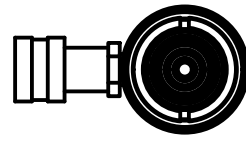


2

1



Ø1.75
ROD

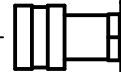
2 3/4-16 UN - 2A

1.81

Ø2.75
HOUSING

RETRACTED 21.50 IN
EXTENDED 37.50 IN

1.00

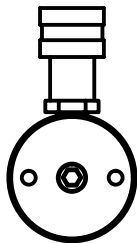
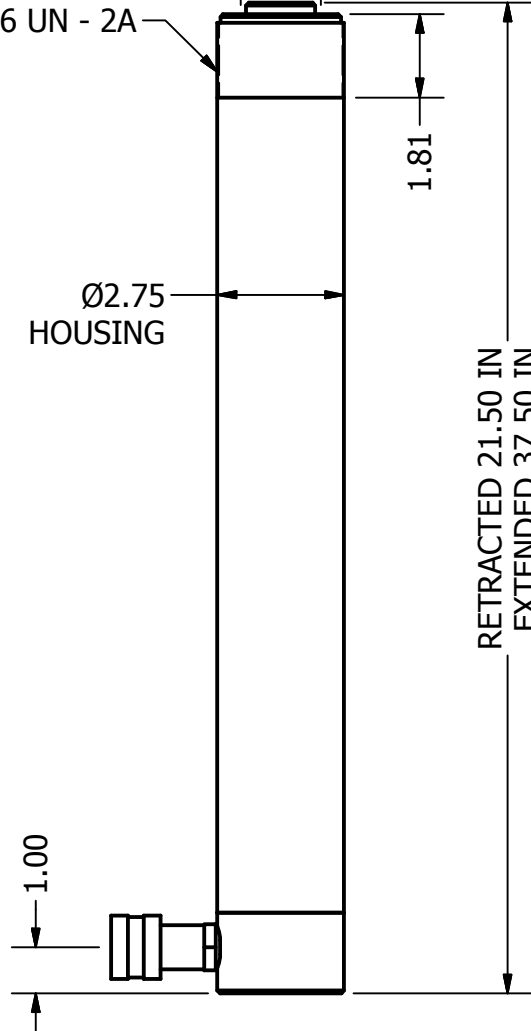
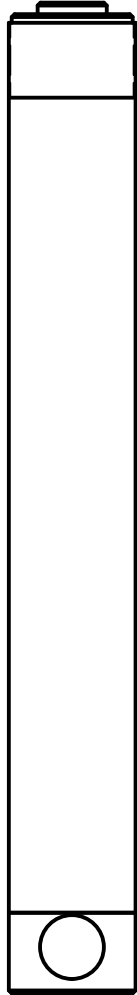


B

B

A

A



2

1

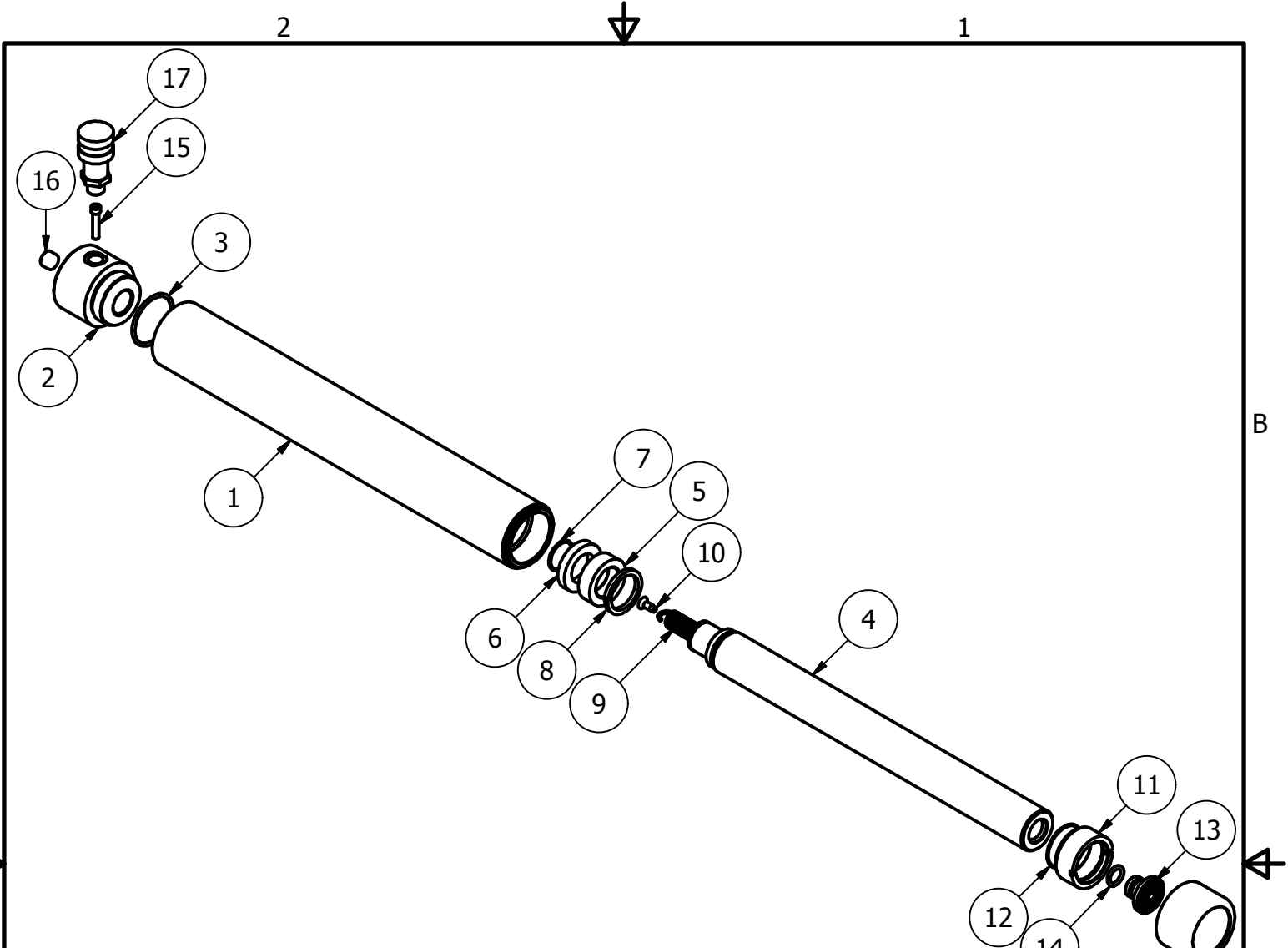
THIS DRAWING IS THE PROPERTY OF RAM-PAC INT'L AND IS NOT TO BE USED IN ANY MANNER DETRIMENTAL TO THEIR INTEREST

RAM-PAC, INT'L.
15600 W. LINCOLN AVE.
NEW BERLIN, WI 53151

TITLE: 15 TON 16 IN STROKE CYL

REVISION: -

EST WT: 28.2 LBS



RC-15-SA-16 Parts List

ITEM	QTY	PART NUMBER	DESCRIPTION
1	1	X-9288-16	15 TON CYLINDER
2	1	X-9514	BASE, 15 TON CYL
3	1	2190153	O-RING -226 2.25 2.00 .125 90D
4	1	X-9169-16	15 TON PLUNGER
5	1	X-9166	BEARING
6	1	X-7011-24	U-CUP
7	1	X-9136	RETAINING RING
8	1	X-9165	STOP RING
9	1	9926-0001	EXTENSION SPRING
10	1	8321-9140	SELF TAPPING SCREW
11	1	X-9171	PLUNGER GUIDE
12	1	X-9174	O-RING
13	1	1652-2304	SADDLE
14	1	X-9173	O-RING
15	1	X-9172	SHCS 1/4 - 20 X 1.25
16	1	2470309	PIPE PLUG 3/8 NPTF
17	1	HA-18	COUPLER W/ DUST COVER
18	1	X-9390	THREAD PROTECTOR