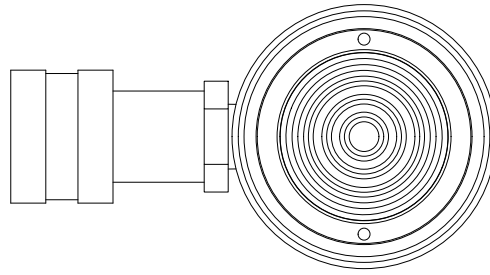


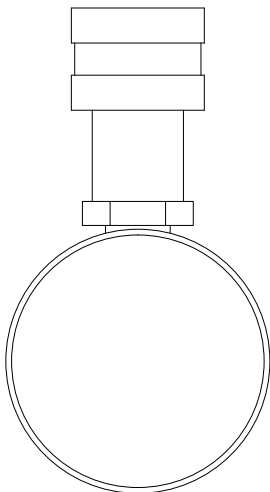
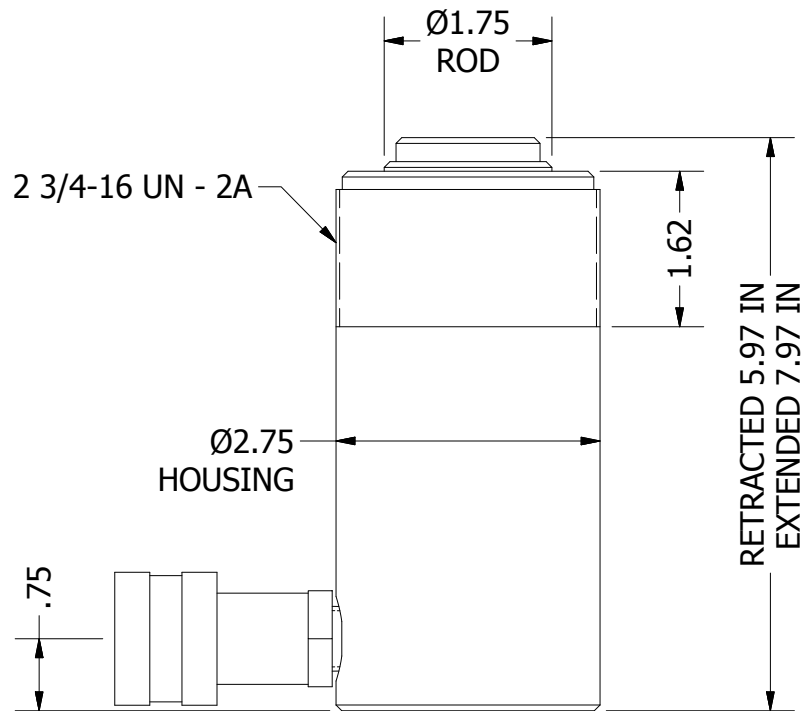
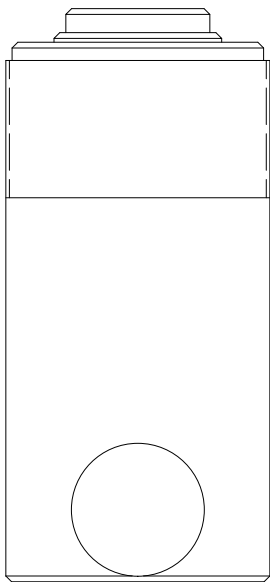
2

1



B

B



A

A

2

1

THIS DRAWING IS THE PROPERTY OF RAM-PAC INT'L AND IS NOT TO BE USED IN ANY MANNER DETRIMENTAL TO THEIR INTEREST

RAM-PAC, INT'L.
15600 W. LINCOLN AVE.
NEW BERLIN, WI 53151

TITLE: 15 TON 2 IN STROKE CYL

REVISION: -

EST WT: 9 LBS

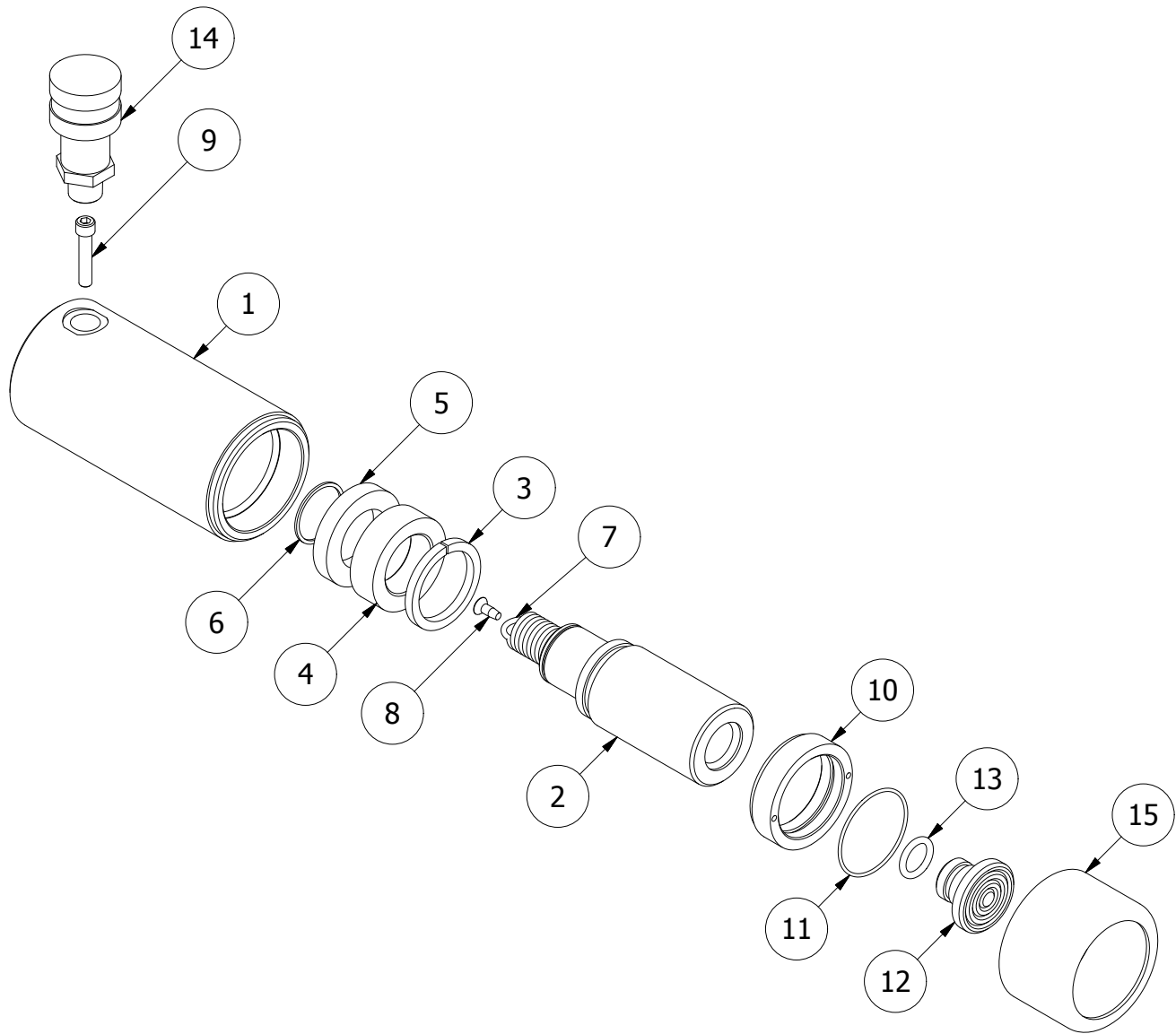
2



1

B

B



REBUILD KIT: X8333

RC-15-SA-2 Parts List

ITEM	QTY	PART NUMBER	DESCRIPTION
1	1	X-9175	CYLINDER
2	1	X-9163	15 TON PLUNGER
3	1	X-9165	STOP RING
4	1	X-9166	BEARING
5	1	X-7011-24	U-CUP
6	1	X-9136	RETAINING RING
7	1	9926-0003	SPRING - EXTENSION
8	1	8321-5081	SELF-TAPPING SCREW #10-24 X .5
9	1	X-9172	SHCS 1/4 - 20 X 1.25
10	1	X-9170	PLUNGER GUIDE
11	1	X-9174	O-RING
12	1	1652-2304	SADDLE
13	1	X-9173	O-RING
14	1	HA-18	COUPLER W/ DUST COVER
15	1	X-9390	THREAD PROTECTOR

2



1

A

A