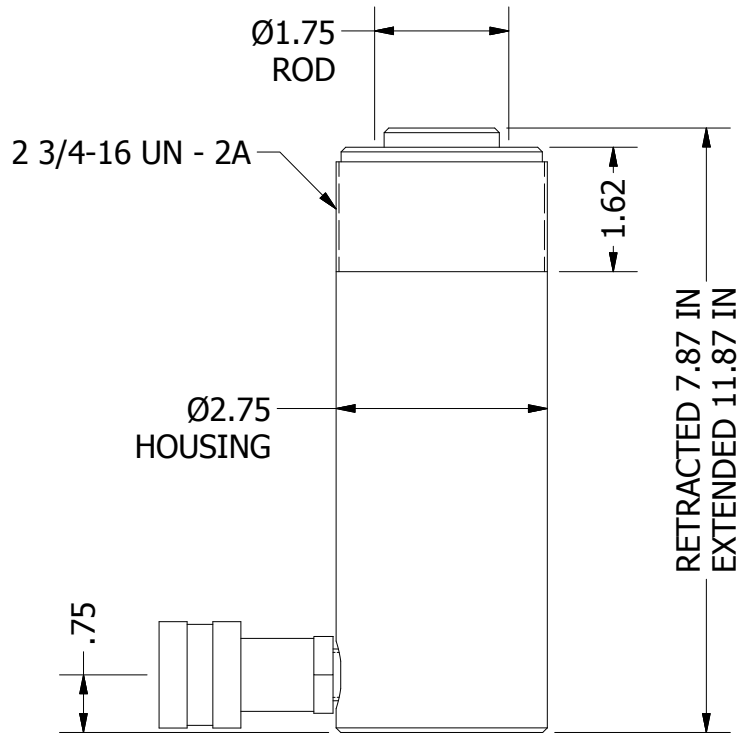
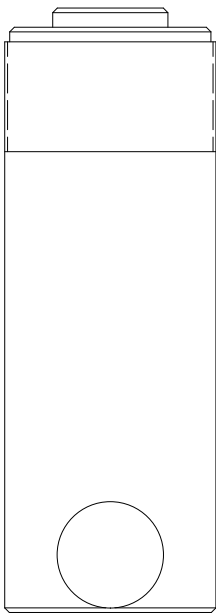
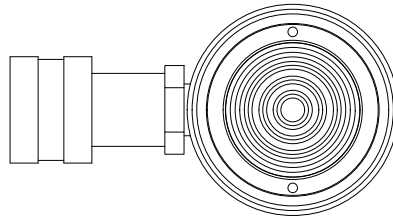


2

1

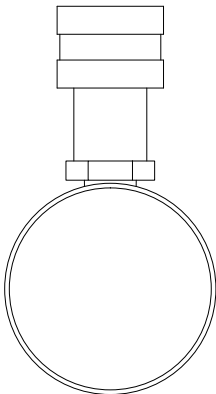
B

B



A

A



2

1

THIS DRAWING IS THE PROPERTY OF RAM-PAC INT'L AND IS NOT TO BE USED IN ANY MANNER DETRIMENTAL TO THEIR INTEREST

RAM-PAC, INT'L.
 15600 W. LINCOLN AVE.
 NEW BERLIN, WI 53151

TITLE: 15 TON 4 IN STROKE CYL

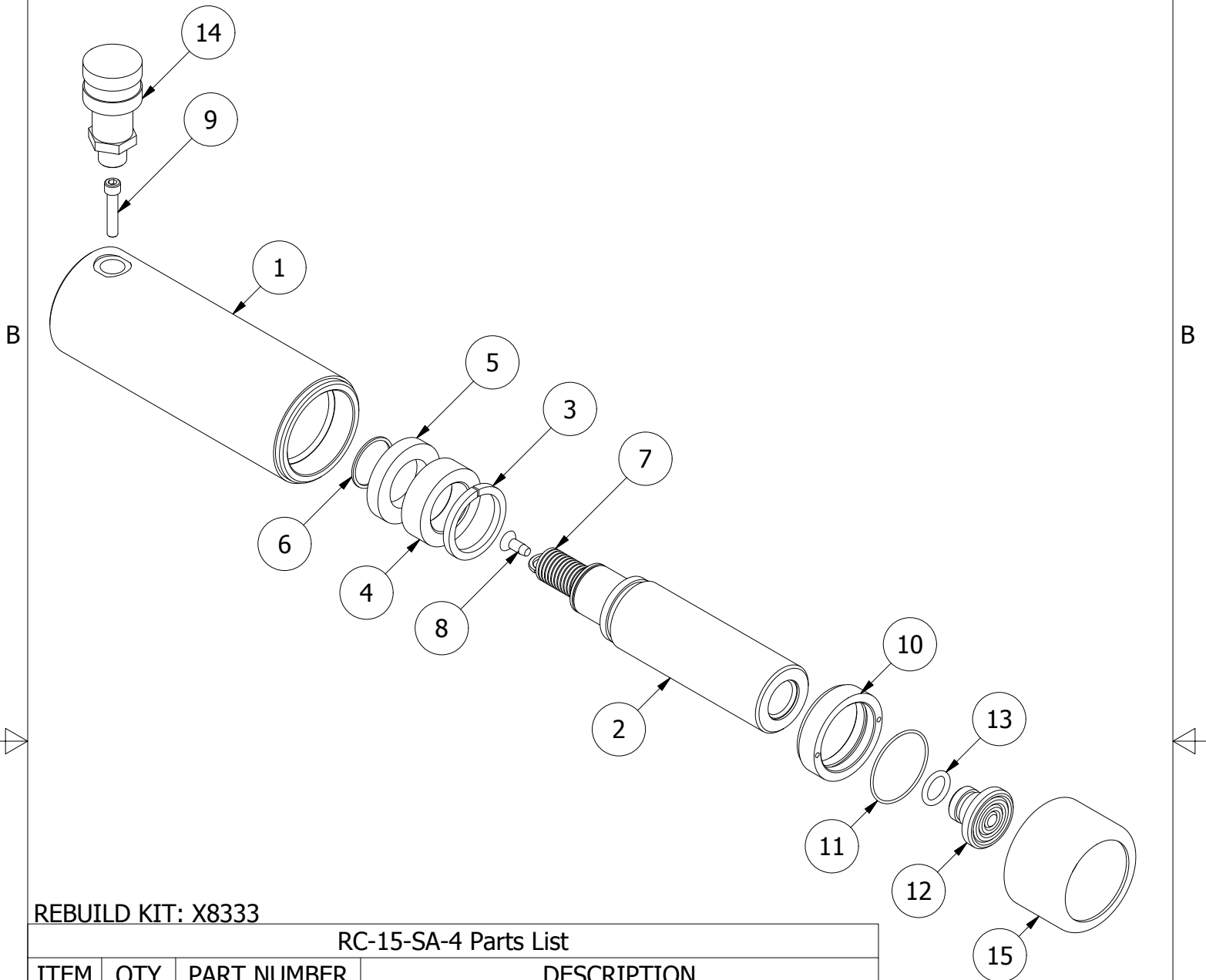
REVISION: -

EST WT: 12 LBS

2



1



REBUILD KIT: X8333

RC-15-SA-4 Parts List

ITEM	QTY	PART NUMBER	DESCRIPTION
1	1	X-9159	HOUSING
2	1	X-9164	PLUNGER
3	1	X-9165	STOP RING
4	1	X-9166	BEARING
5	1	X-7011-24	U-CUP
6	1	X-9136	RETAINING RING
7	1	X-9207 ASSY	EXTENSION SPRING
8	1	8321-9140	SELF TAPPING SCREW
9	1	X-9172	SHCS 1/4 - 20 X 1.25
10	1	X-9170	PLUNGER GUIDE
11	1	X-9174	O-RING
12	1	1652-2304	SADDLE
13	1	X-9173	O-RING
14	1	HA-18	COUPLER W/ DUST COVER
15	1	X-9390	THREAD PROTECTOR

2



1

A

A