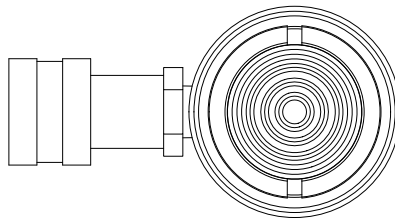


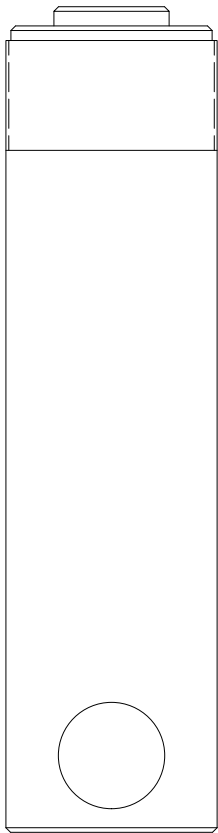
2

1



B

B



Ø1.75
ROD

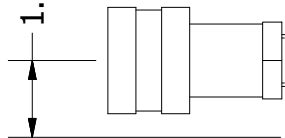
2 3/4-16 UN - 2A

1.62

Ø2.75
HOUSING

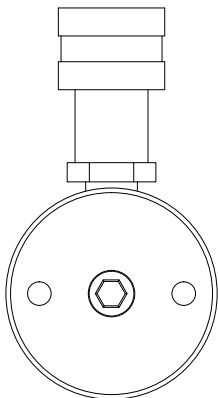
RETRACTED 10.75 IN
EXTENDED 16.75 IN

1.00



A

A



THIS DRAWING IS THE PROPERTY OF RAM-PAC INT'L AND IS NOT TO BE USED IN ANY MANNER DETRIMENTAL TO THEIR INTEREST

RAM-PAC, INT'L.
15600 W. LINCOLN AVE.
NEW BERLIN, WI 53151

TITLE: 15 TON 6 IN STROKE CYL

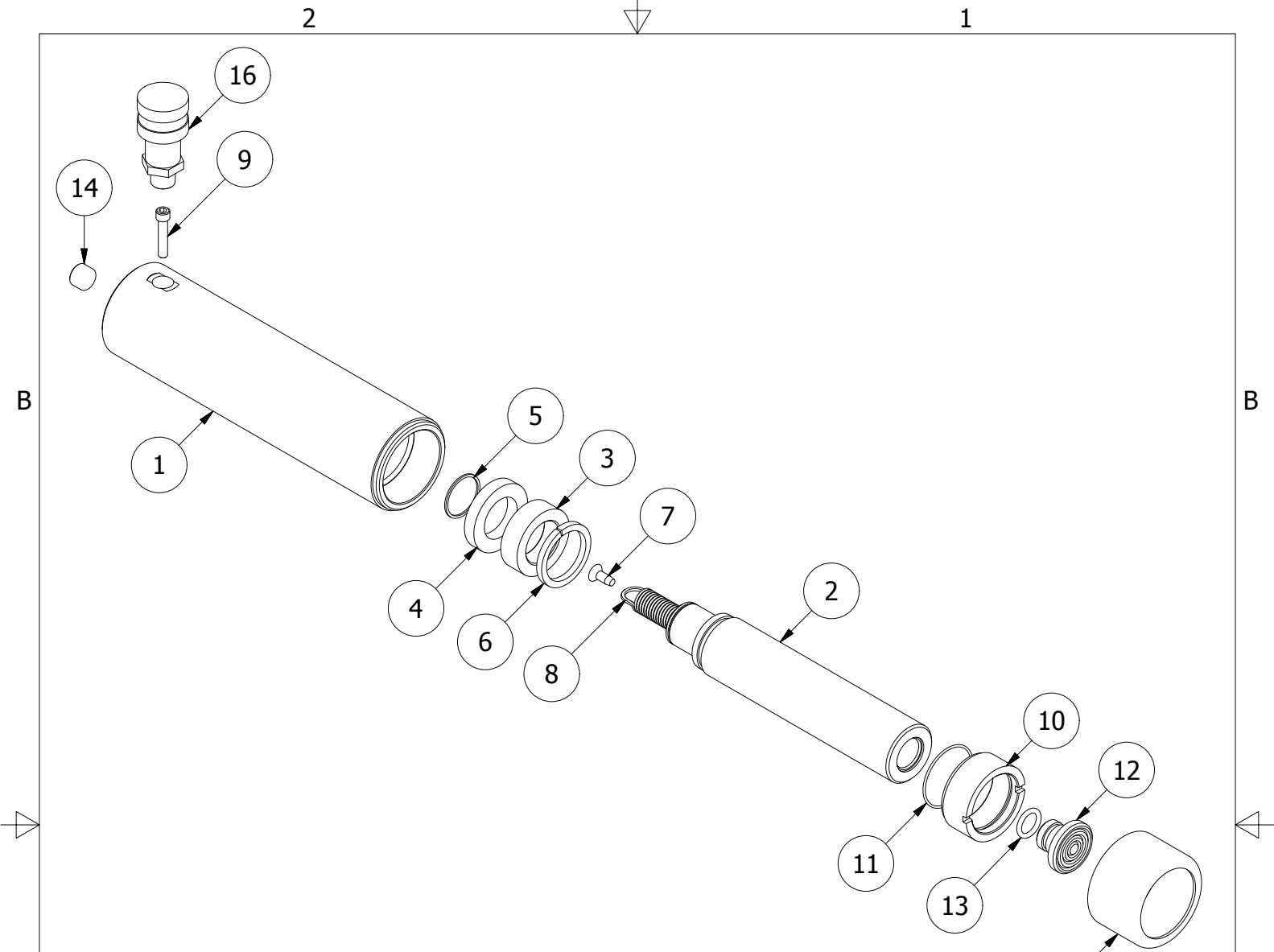
REVISION: -

EST WT: 15.5 LBS

2

1





REBUILD KIT: X8333

RC-15-SA-6 Parts List

ITEM	QTY	PART NUMBER	DESCRIPTION
1	1	X-9160	CYLINDER
2	1	X-9167	PLUNGER
3	1	X-9166	BEARING
4	1	X-7011-24	U-CUP
5	1	X-9136	RETAINING RING
6	1	X-9165	STOP RING
7	1	8321-9140	SELF TAPPING SCREW
8	1	9926-0000	EXTENSION SPRING
9	1	X-9172	SHCS 1/4 - 20 X 1.25
10	1	X-9171	PLUNGER GUIDE
11	1	X-9174	O-RING
12	1	1652-2304	SADDLE
13	1	X-9173	O-RING
14	1	2470309	PIPE PLUG 3/8 NPTF
15	1	X-9390	THREAD PROTECTOR
16	1	HA-18	COUPLER W/ DUST COVER