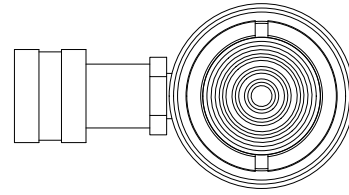


2

1



B

B

Ø1.75  
ROD

2 3/4-16 UN - 2A

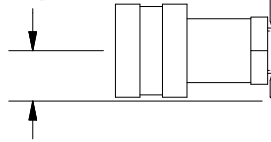
1.62

Ø2.75  
HOUSING

RETRACTED 12.75 IN  
EXTENDED 20.75 IN

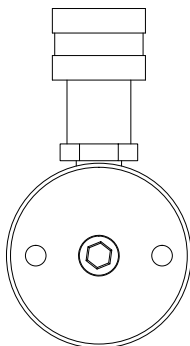


.75



A

A



2

1

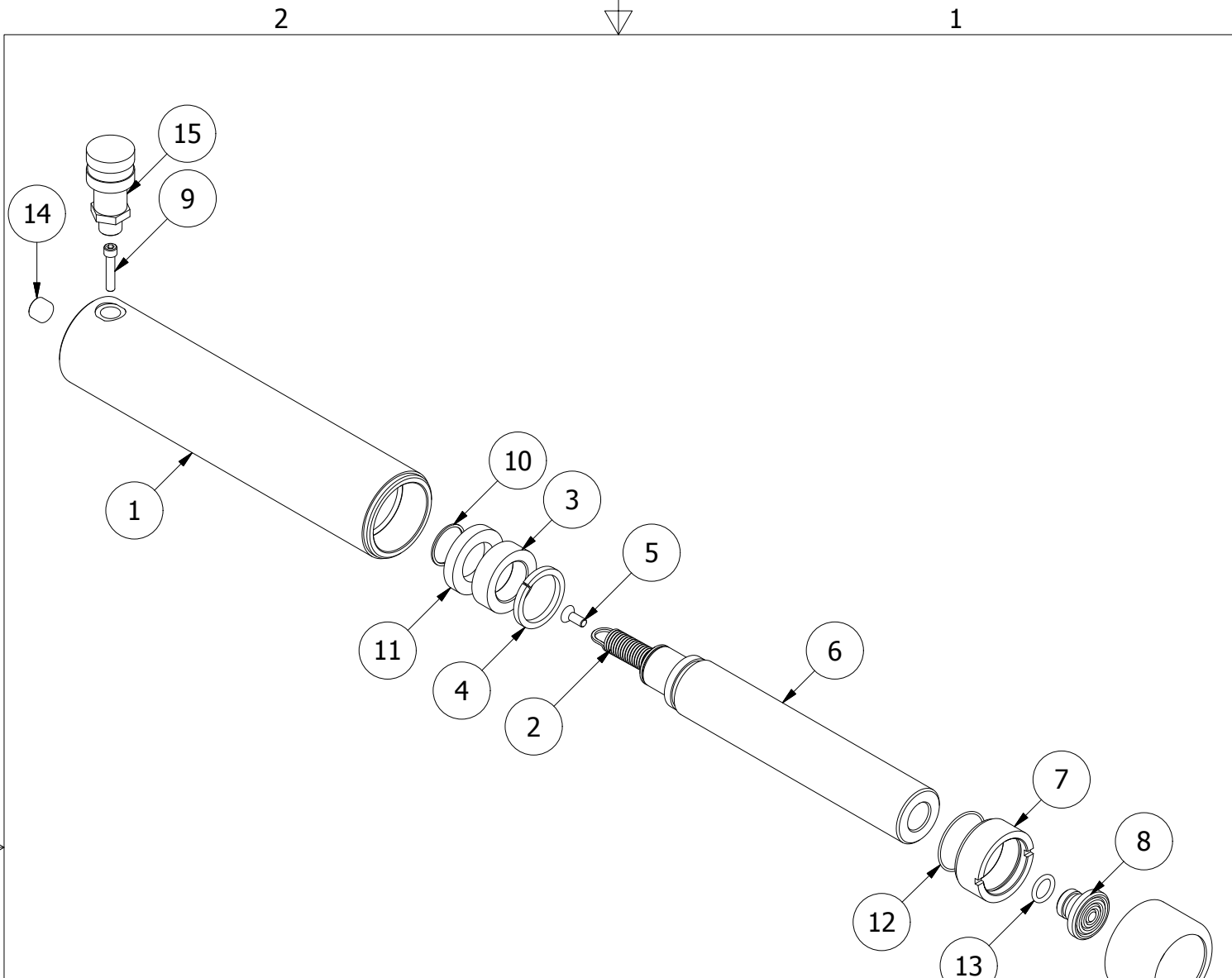
THIS DRAWING IS THE PROPERTY OF RAM-PAC INT'L AND IS NOT TO BE USED IN ANY MANNER DETRIMENTAL TO THEIR INTEREST

**RAM-PAC, INT'L.**  
15600 W. LINCOLN AVE.  
NEW BERLIN, WI 53151

**TITLE: 15 TON 8 IN STROKE CYL**

**REVISION: -**

**EST WT: 18.7 LBS**



REBUILD KIT: X8333

RC-15-SA-8 Parts List

ITEM	QTY	PART NUMBER	DESCRIPTION
1	1	X-9161	CYLINDER HOUSING
6	1	X-9168	15 TON PLUNGER
3	1	X-9166	BEARING
11	1	X-7011-24	U-CUP
10	1	X-9136	RETAINING RING
4	1	X-9165	STOP RING
5	1	X-9132-1	FLAT SHS .25-20 X .5
2	1	9926-0000	EXTENSION SPRING
9	1	X-9172	SHCS 1/4 - 20 X 1.25
7	1	X-9171	PLUNGER GUIDE
12	1	X-9174	O-RING
8	1	1652-2304	SADDLE
13	1	X-9173	O-RING
14	1	2470309	PIPE PLUG 3/8 NPTF
15	1	HA-18	COUPLER W/ DUST COVER
16	1	X-9390	THREAD PROTECTOR