

RETRACTED 15.46 IN
EXTENDED 25.46 IN

Ø1.63
ROD

3 5/16-12 UNS - 2A

Ø3.38
HOUSING

1.69

2.00

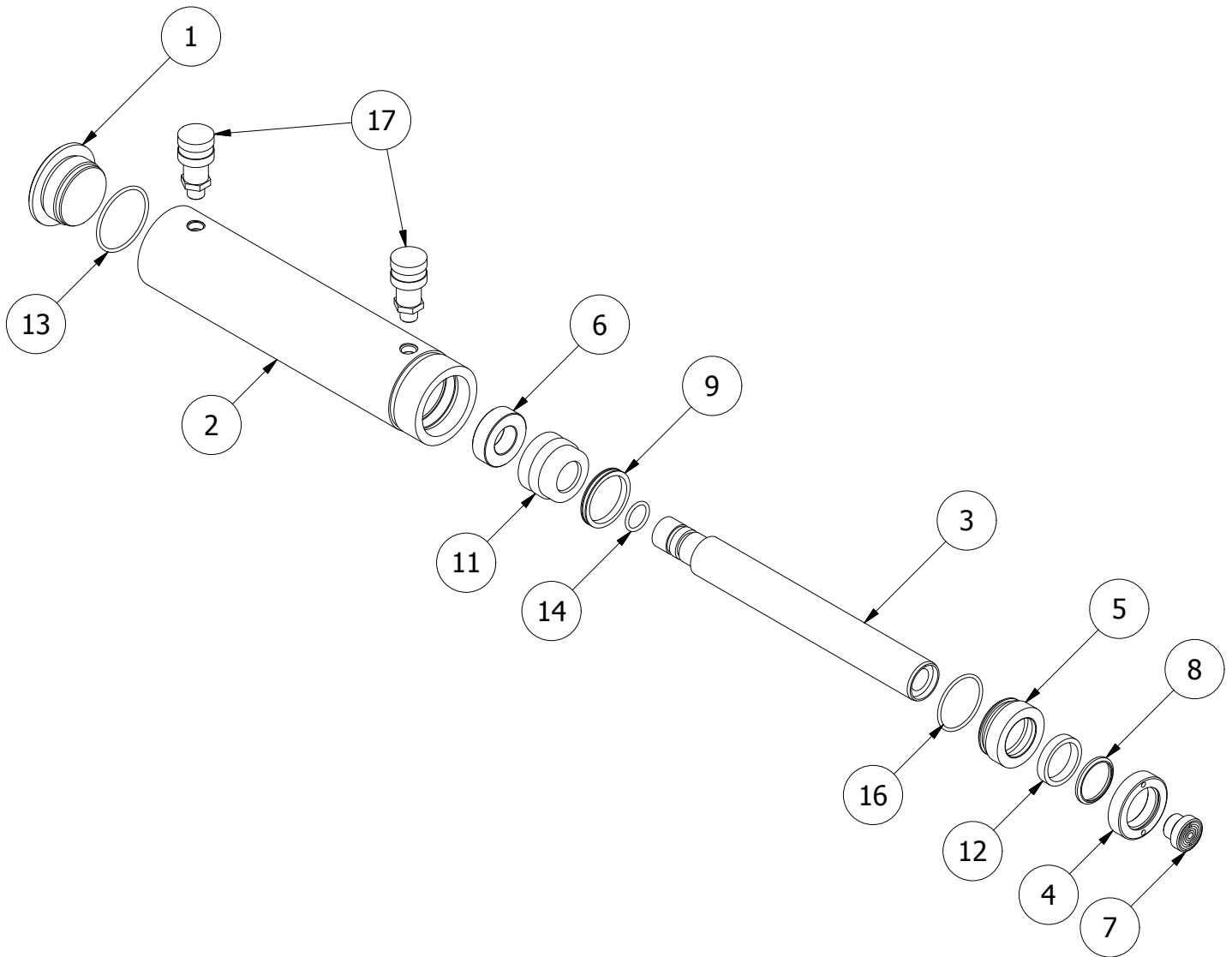
THIS DRAWING IS THE PROPERTY OF RAM-PAC INT'L AND IS NOT TO BE USED IN ANY MANNER DETRIMENTAL TO THEIR INTEREST	
RAM-PAC, INT'L. 15600 W. LINCOLN AVE. NEW BERLIN, WI 53151	
TITLE:	20 TON 10 IN STROKE CYL
REVISION:	-
EST WT:	34 LBS

2

1

B

B



REBUILD KIT: X7068

ITEM	QTY	PART NUMBER	DESCRIPTION
1	1	X-6910	RAM BASE
2	1	X-6911	CYLINDER HOUSING
3	1	X-8169	RAM PLUNGER
4	1	X-8162	GLAND NUT
5	1	X-6914	GLAND RING
6	1	X-6915	RETAINING NUT
7	1	X-8164	PLUNGER TOP
8	1	X-6907-2	WIPER RINGS
9	1	X-6437-2	G.T. RING (PISTION TYPE)
11	1	X-6913	PLUNGER GUIDE RING
12	1	X-7011-2	U-CUP
13	1	X-6477-7	O-RING 2.75 X 2.484 X .139CS
14	1	X-6477-2	O-RING 1.25 X .984 X .139CS
16	1	2190115	*O-RING 277
17	2	HA-18	COUPLER W/ DUST COVER

A

A

2

1