

RETRACTED 21.84 IN  
EXTENDED 37.84 IN

Ø1.63  
ROD

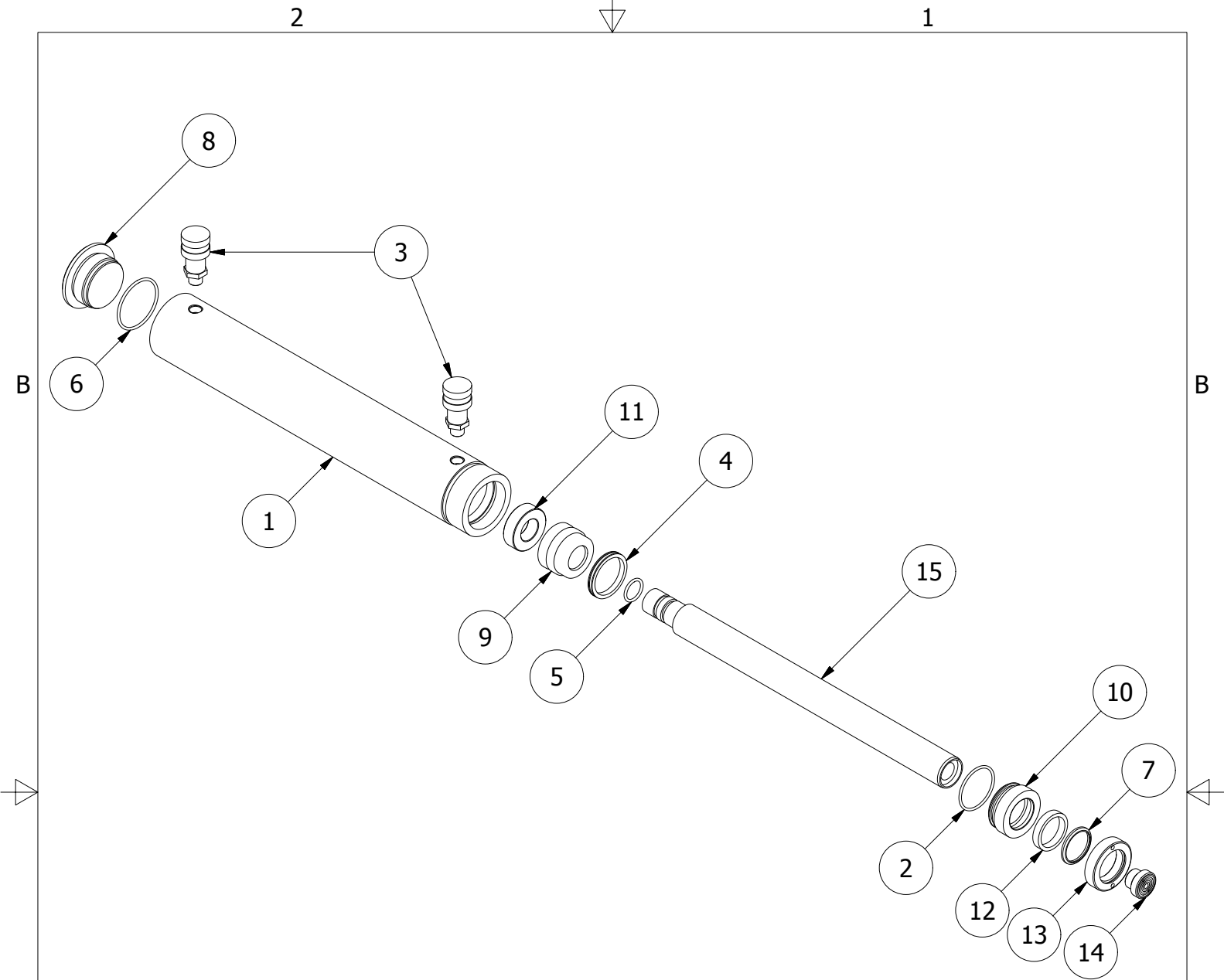
3 5/16-12 UN - 2A

Ø3.37  
HOUSING

2.00

1.69

THIS DRAWING IS THE PROPERTY OF RAM-PAC INT'L AND IS NOT TO BE USED IN ANY MANNER DETRIMENTAL TO THEIR INTEREST	
<b>RAM-PAC, INT'L.</b> 15600 W. LINCOLN AVE. NEW BERLIN, WI 53151	
TITLE:	20 TON 16 IN STROKE CYL
REVISION:	-
EST WT:	46 LBS



**REBUILD KIT: X7068**

ITEM	QTY	PART NUMBER	DESCRIPTION
1	1	X-6911-1	RAM CYLINDER
2	1	2190115	*O-RING 277
3	2	HA-18	COUPLER W/ DUST COVER
4	1	X-6437-2	G.T. RING (PISTION TYPE)
5	1	X-6477-2	O-RING 1.25 X .984 X .139CS
6	1	X-6477-7	O-RING 2.75 X 2.484 X .139CS
7	1	X-6907-2	WIPER RINGS
8	1	X-6910	RAM BASE
9	1	X-6913	PLUNGER GUIDE RING
10	1	X-6914	GLAND RING
11	1	X-6915	RETAINING NUT
12	1	X-7011-2	U-CUP
13	1	X-8162	GLAND NUT
14	1	X-8164	PLUNGER TOP
15	1	X-8169-1	PLUNGER