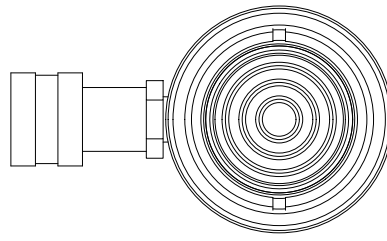


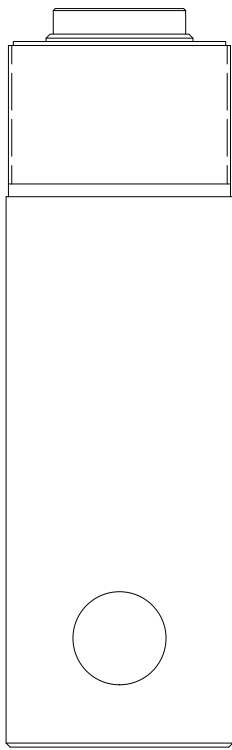
2

1



B

B



3 5/16-12 UNS - 2A

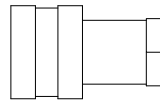
Ø2.19
ROD

2.12

Ø3.38
HOUSING

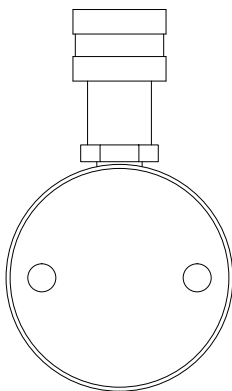
RETRACTED 10.99 IN
EXTENDED 17.49 IN

1.62



A

A



2

1

THIS DRAWING IS THE PROPERTY OF RAM-PAC INT'L AND IS NOT TO BE USED IN ANY MANNER DETRIMENTAL TO THEIR INTEREST

RAM-PAC, INT'L.
15600 W. LINCOLN AVE.
NEW BERLIN, WI 53151

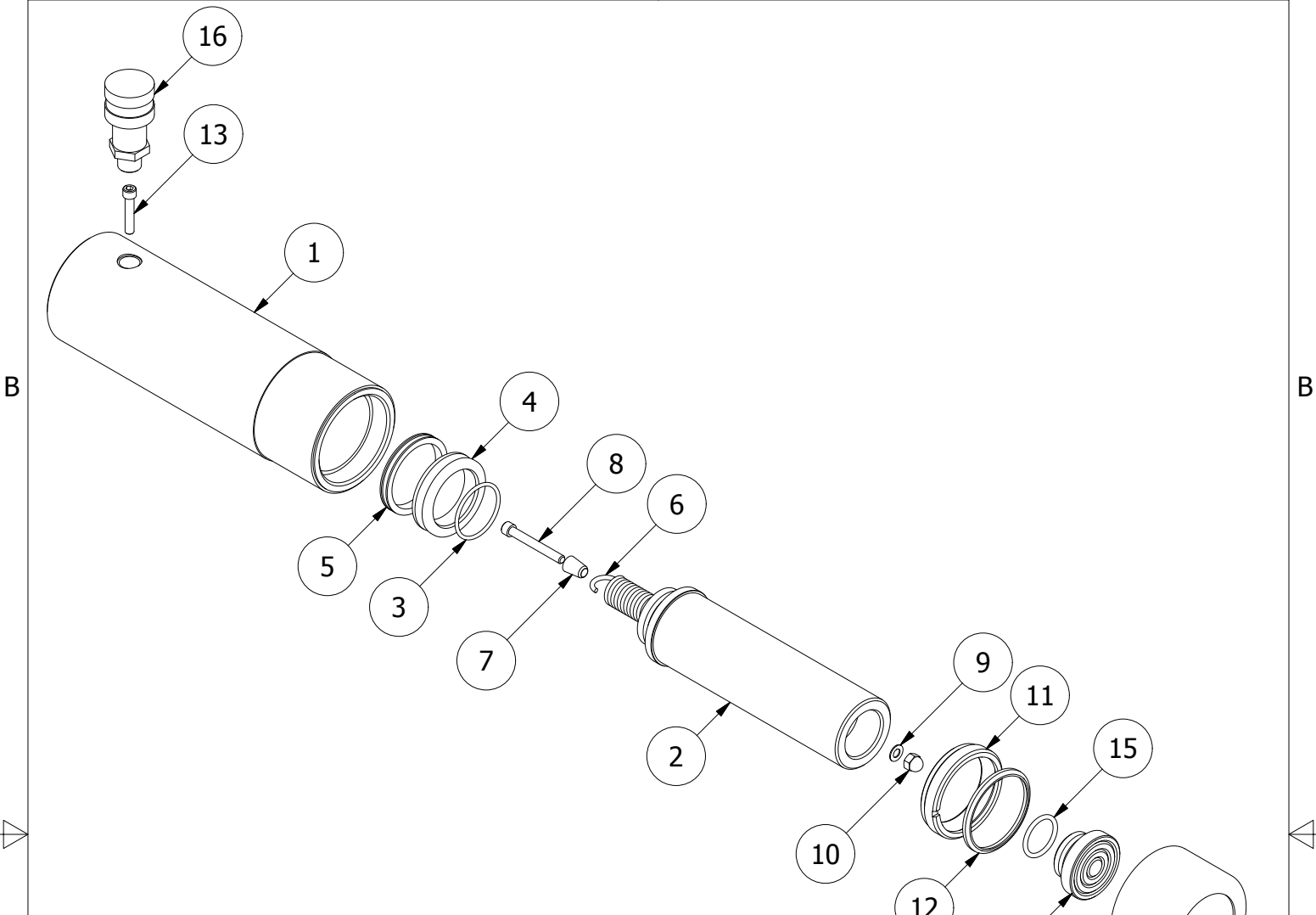
TITLE: 20 TON 6.5 IN STROKE CYL

REVISION: -

EST WT: 23.6 LBS

2

1



REBUILD KIT: X7014

RC-20-SA-6.5 Parts List

| ITEM | QTY | PART NUMBER | DESCRIPTION |
|------|-----|-------------|--------------------------|
| 1 | 1 | X-8202 | CYLINDER |
| 2 | 1 | X-8201 | PLUNGER |
| 3 | 1 | X-6477-19 | ORING 1.75 1.549 .103 |
| 4 | 1 | X-6678-2 | BRONZE WEAR RING |
| 5 | 1 | X-6437-2 | G.T. RING (PISTION TYPE) |
| 6 | 1 | X-9188 | EXTENSION SPRING |
| 7 | 1 | X-7193 | SPRING SLEEVE |
| 8 | 1 | 2220448 | SHCS .25-20 X 2.00 |
| 9 | 1 | X-7415-8 | COPPER GASKET |
| 10 | 1 | H-3943-P | LOCK NUT .25-20 |
| 11 | 1 | X-8186-2 | GLAND NUT |
| 12 | 1 | X-6907-14 | WIPER RINGS |
| 13 | 1 | X-9172 | SHCS 1/4 - 20 X 1.25 |
| 14 | 1 | 1656-2300 | SADDLE |
| 15 | 1 | 2190249 | O-RING 1.31 X 1.06 X .12 |
| 16 | 1 | HA-18 | COUPLER W/ DUST COVER |
| 17 | 1 | X-9391 | THREAD PROTECTOR |

2

1

A

A

B

B