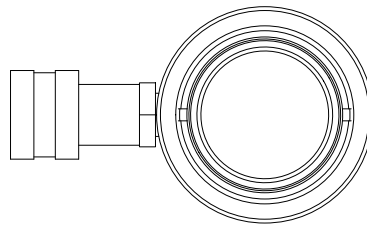


2

1



B

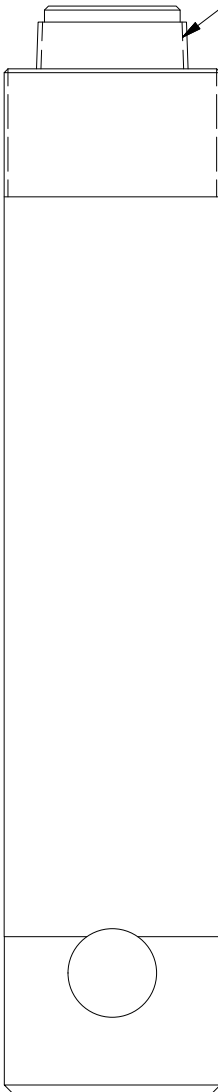
B

2-11.5 NPT

Ø2.24  
ROD

3 1/2-10 UNS 2A

2.00



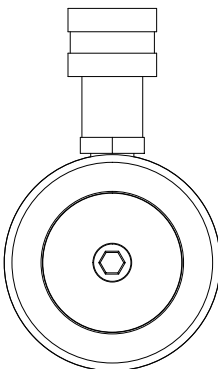
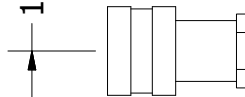
Ø3.38  
HOUSING

RETRACTED 16.98 IN  
EXTENDED 26.98 IN

A

A

1.87



2

1

THIS DRAWING IS THE PROPERTY OF RAM-PAC INT'L AND IS NOT TO BE USED IN ANY MANNER DETRIMENTAL TO THEIR INTEREST

**RAM-PAC, INT'L.**  
15600 W. LINCOLN AVE.  
NEW BERLIN, WI 53151

TITLE: 25 TON 10 IN STRK AUTO CYL

REVISION: -

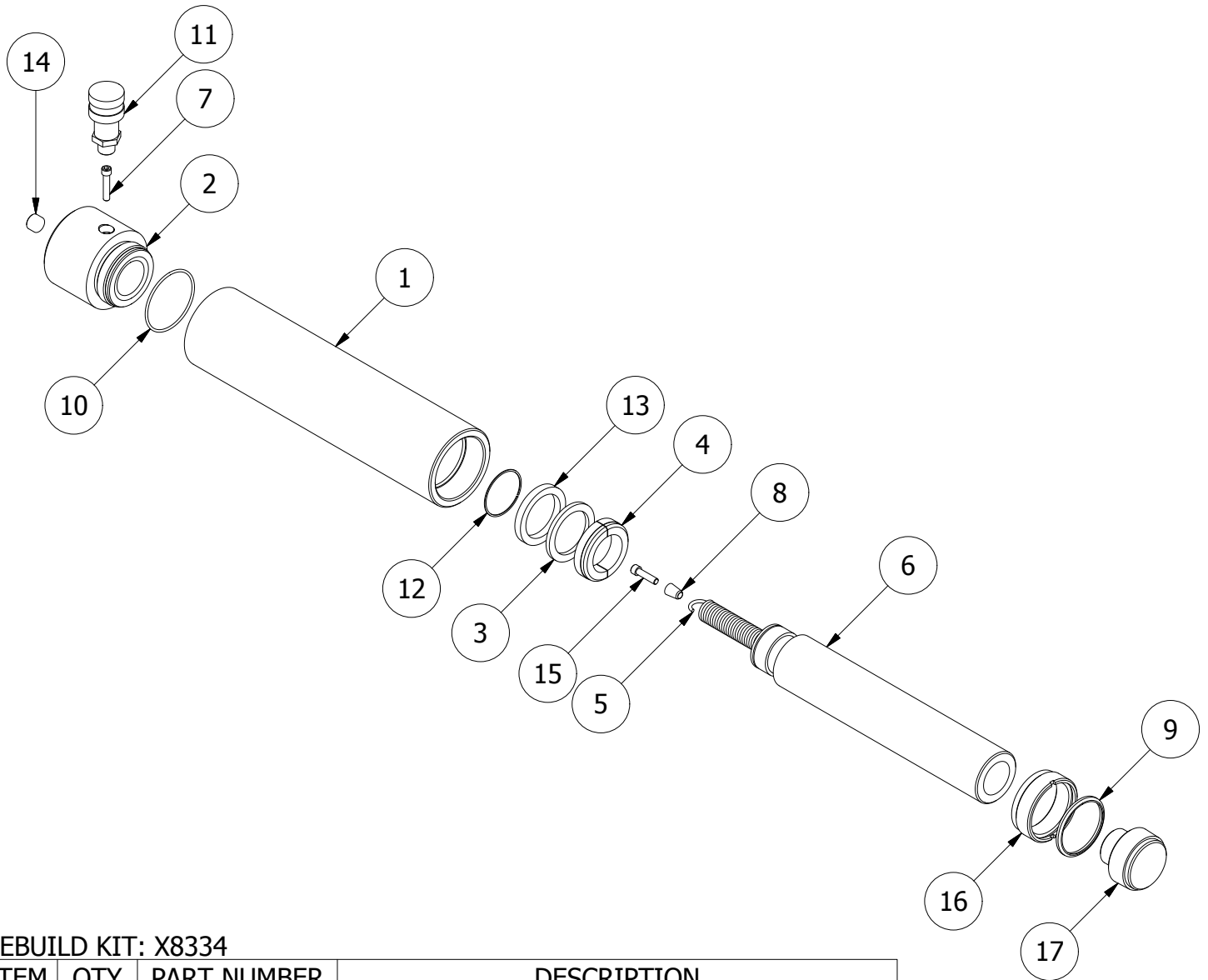
EST WT: 32 LBS

2

1

B

B



## REBUILD KIT: X8334

ITEM	QTY	PART NUMBER	DESCRIPTION
1	1	X-9280-2	CYLINDER HOUSING
2	1	X-9275	CYLINDER BASE
3	1	X-9191	BACK-UP RING
4	1	X-9190	BEARING
5	1	X-9186	EXTENSION SPRING
6	1	X-9178	PLUNGER
7	1	X-9172	SHCS 1/4 - 20 UNC-2A X 1.25
8	1	X-7193	SPRING SLEEVE
9	1	X-6907-14	WIPER RINGS
10	1	X-6477-25	O-RING
11	1	HA-18	COUPLER W/ DUST COVER
12	1	7730-1875	RETAINING RING
13	1	7133-8440	U-CUP
14	1	2470309	PIPE PLUG 3/8 NPTF
15	1	2220551	SHCS 1/4 - 20 UNC-2A X 1.00
16	1	1654-2203	GUIDE - PLUNGER
17	1	X-20-812	25 TON BEELIN AUTO. ROD CAP

2

1

A

A