

3 5/16 - 12UNS - 2A

Ø2.24
ROD

2.00

Ø3.38
HOUSING

RETRACTED 17.28 IN
EXTENDED 29.28 IN

.87

THIS DRAWING IS THE PROPERTY OF RAM-PAC INT'L AND IS NOT TO BE USED IN ANY MANNER DETRIMENTAL TO THEIR INTEREST

<p>RAM-PAC, INT'L. 15600 W. LINCOLN AVE. NEW BERLIN, WI 53151</p>	
TITLE:	25 TON 12 IN STROKE CYL
REVISION:	-
EST WT:	36 LBS

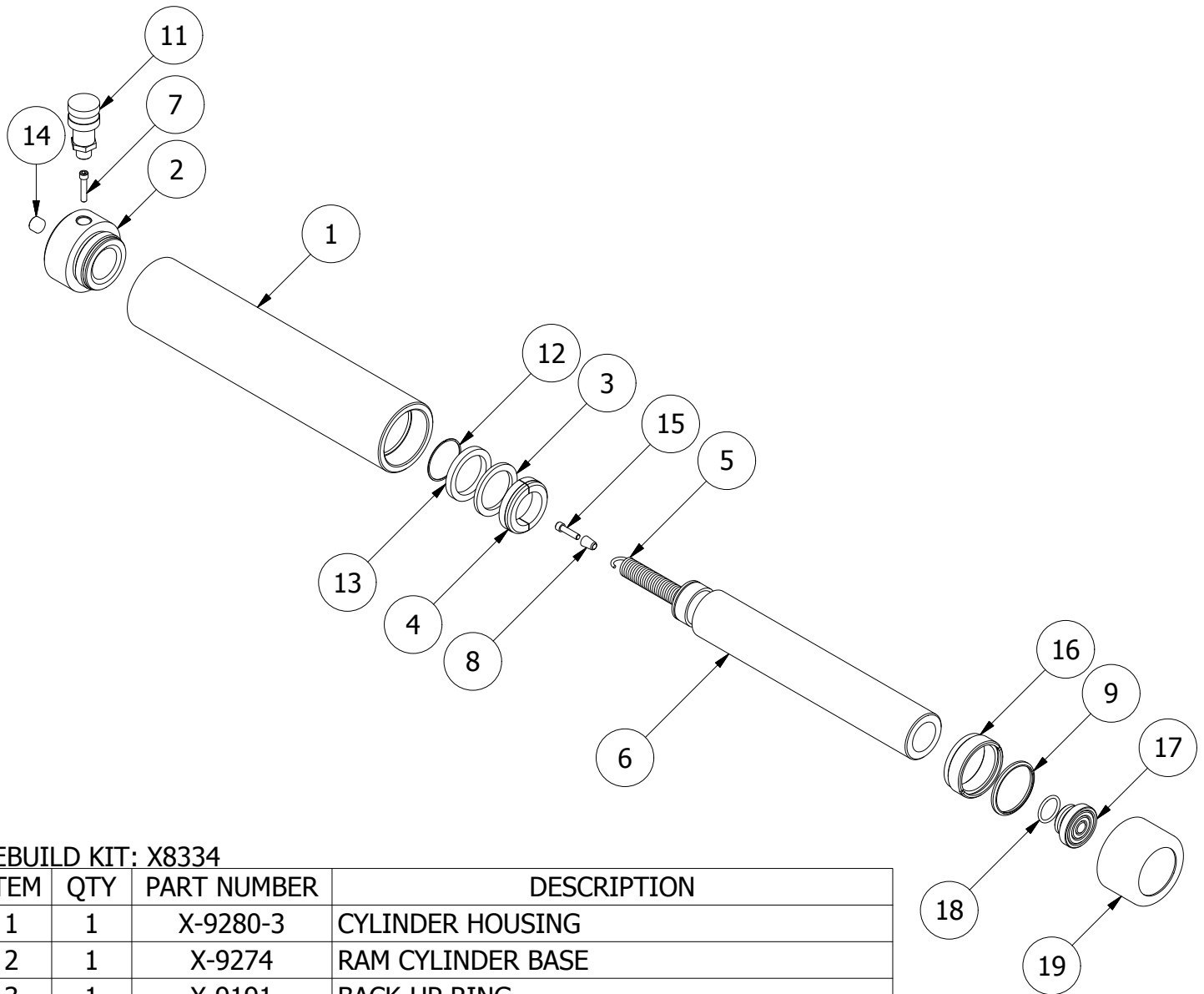
2



1

B

B



REBUILD KIT: X8334

ITEM	QTY	PART NUMBER	DESCRIPTION
1	1	X-9280-3	CYLINDER HOUSING
2	1	X-9274	RAM CYLINDER BASE
3	1	X-9191	BACK-UP RING
4	1	X-9190	BEARING
5	1	X-9186	EXTENSION SPRING
6	1	X-9177-3	PLUNGER
7	1	X-9172	SHCS 1/4 - 20 UNC-2A X 1.25
8	1	X-7193	SPRING SLEEVE
9	1	X-6907-14	WIPER RINGS
10	1	X-6477-25	O-RING
11	1	HA-18	COUPLER W/ DUST COVER
12	1	7730-1875	RETAINING RING
13	1	7133-8440	U-CUP
14	1	2470309	PIPE PLUG 3/8 NPTF
15	1	2220551	SHCS 1/4 - 20 UNC-2A X 1.00
16	1	1654-2203	GUIDE - PLUNGER
17	1	1656-2300	SADDLE
18	1	2190249	O-RING 1.31 X 1.06 X .12
19	1	X-9391	THREAD PROTECTOR

A

A

2



1