

2

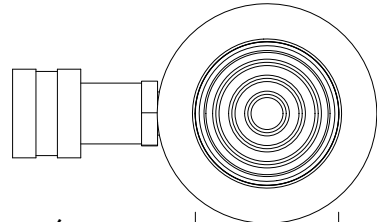
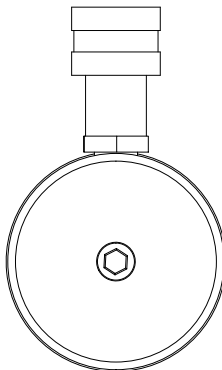
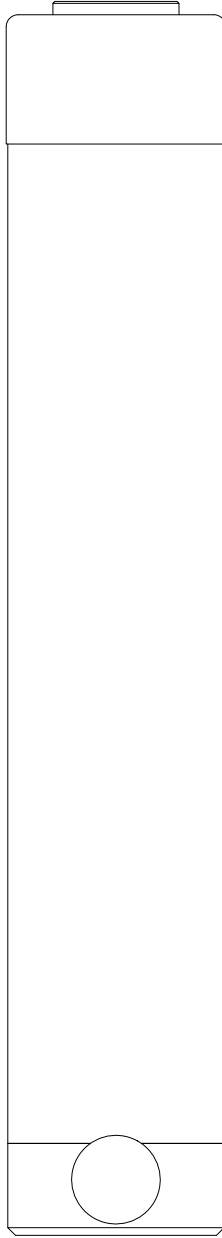
1

B

B

A

A



Ø2.24
ROD

3 5/16 - 12UNS - 2A

2.00

Ø3.38
HOUSING

.87

RETRACTED 19.28 IN
EXTENDED 33.28 IN

THIS DRAWING IS THE PROPERTY OF RAM-PAC INT'L AND IS NOT TO BE USED IN ANY MANNER DETRIMENTAL TO THEIR INTEREST

RAM-PAC, INT'L.
15600 W. LINCOLN AVE.
NEW BERLIN, WI 53151

TITLE: 25 TON 14 IN STROKE CYL

REVISION: -

EST WT: 40 LBS

2

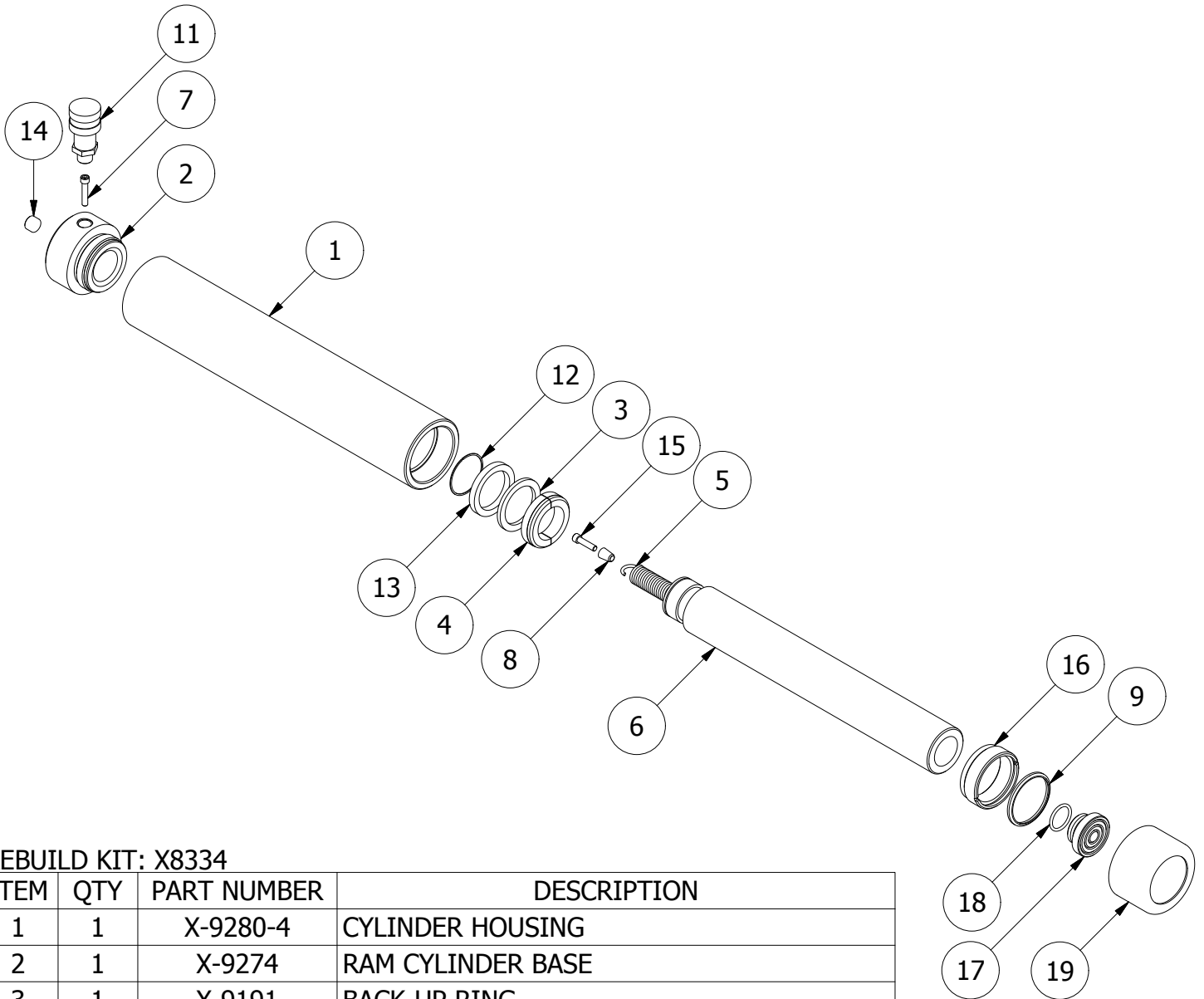
1

2

1

B

B



REBUILD KIT: X8334

ITEM	QTY	PART NUMBER	DESCRIPTION
1	1	X-9280-4	CYLINDER HOUSING
2	1	X-9274	RAM CYLINDER BASE
3	1	X-9191	BACK-UP RING
4	1	X-9190	BEARING
5	1	X-9186	EXTENSION SPRING
6	1	X-9179	PLUNGER
7	1	X-9172	SHCS 1/4 - 20 UNC-2A X 1.25
8	1	X-7193	SPRING SLEEVE
9	1	X-6907-14	WIPER RINGS
10	1	X-6477-25	O-RING
11	1	HA-18	COUPLER W/ DUST COVER
12	1	7730-1875	RETAINING RING
13	1	7133-8440	U-CUP
14	1	2470309	PIPE PLUG 3/8 NPTF
15	1	2220551	SHCS 1/4 - 20 UNC-2A X 1.00
16	1	1654-2203	GUIDE - PLUNGER
17	1	1656-2300	SADDLE
18	1	2190249	O-RING 1.31 X 1.06 X .12
19	1	X-9391	THREAD PROTECTOR

A

A

2

1