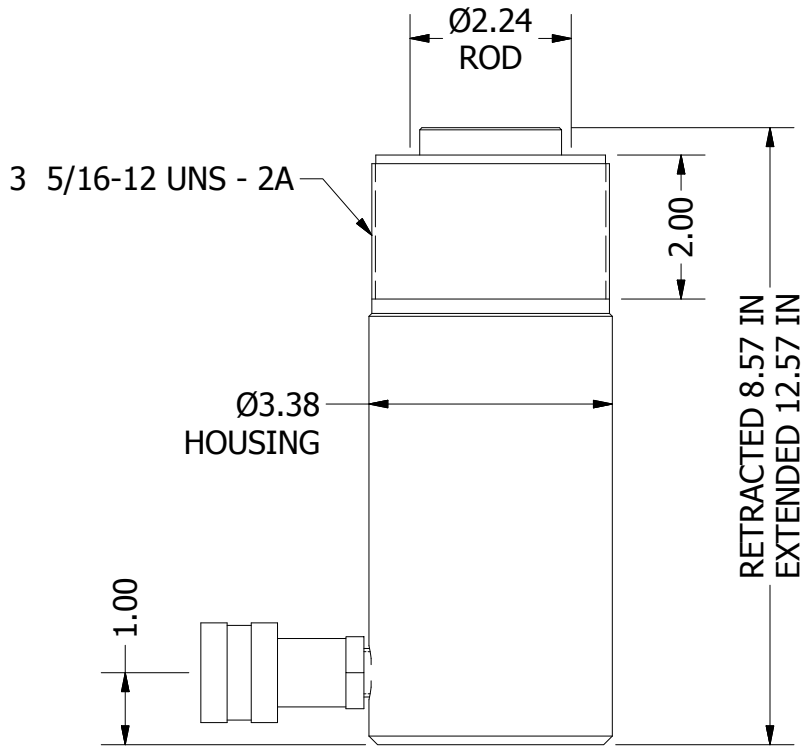
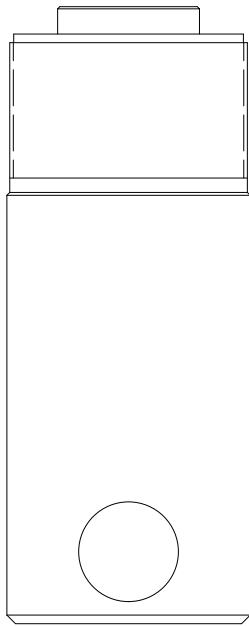
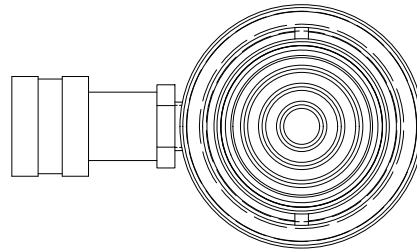


2

1

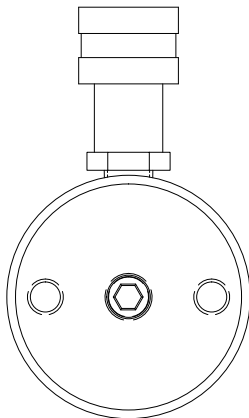
B

B



A

A



2

1

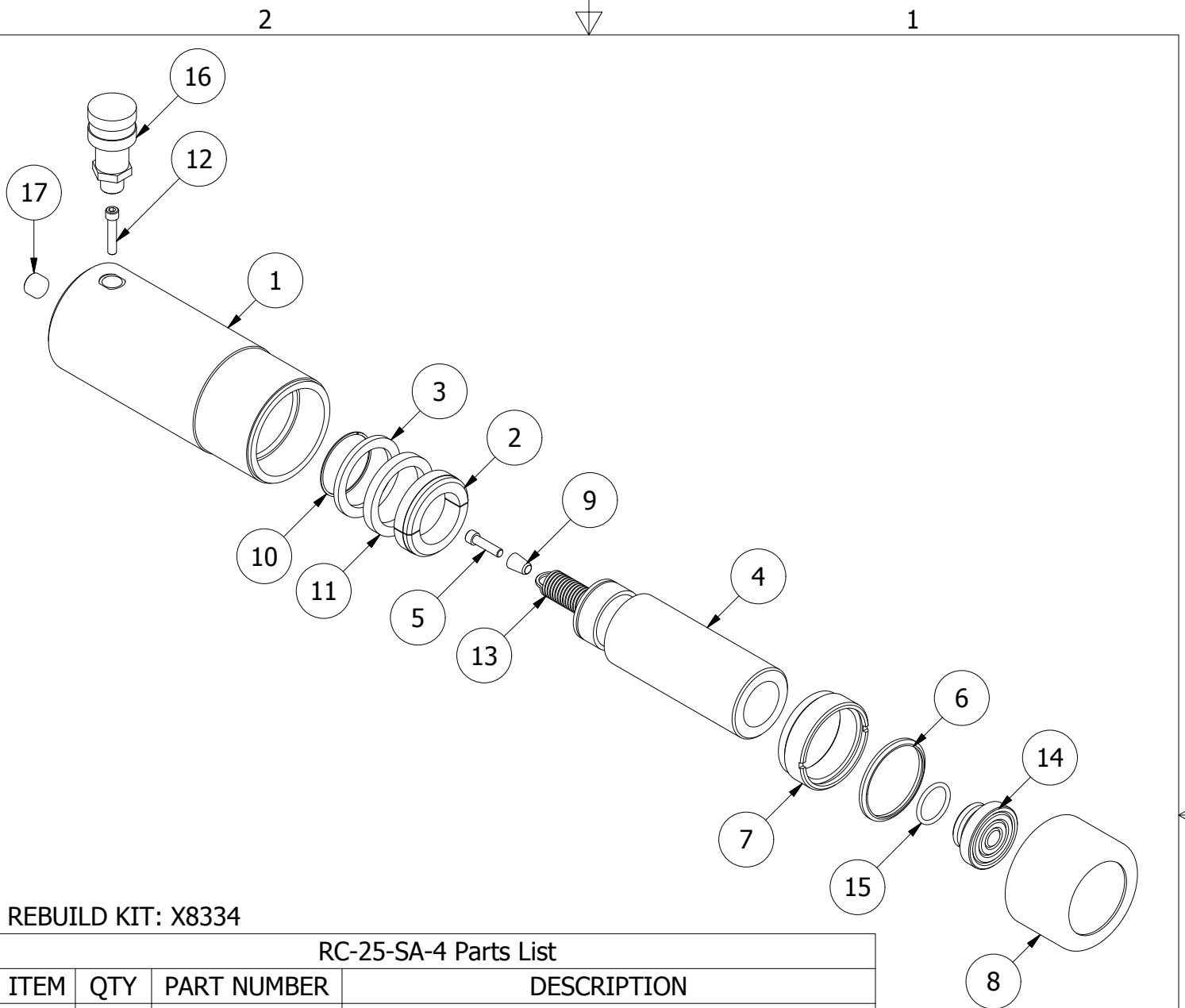
THIS DRAWING IS THE PROPERTY OF RAM-PAC INT'L AND IS NOT TO BE USED IN ANY MANNER DETRIMENTAL TO THEIR INTEREST

RAM-PAC, INT'L.
 15600 W. LINCOLN AVE.
 NEW BERLIN, WI 53151

TITLE: 25 TON 4 IN STROKE CYL

REVISION: -

EST WT: 18.2 LBS



REBUILD KIT: X8334

RC-25-SA-4 Parts List

| ITEM | QTY | PART NUMBER | DESCRIPTION |
|------|-----|-------------|--------------------------|
| 1 | 1 | X-9197 | CYLINDER HOUSING |
| 2 | 1 | X-9190 | BEARING |
| 3 | 1 | X-9191 | BACK-UP RING |
| 4 | 1 | X--9176-2 | PLUNGER |
| 5 | 1 | 2220551 | SHCS 1/4 - 20 X 1.00 |
| 6 | 1 | X-6907-14 | WIPER RINGS |
| 7 | 1 | 1654-2203 | GUIDE - PLUNGER |
| 8 | 1 | X-9391 | THREAD PROTECTOR |
| 9 | 1 | X-7193 | SPRING SLEEVE |
| 10 | 1 | 7730-1875 | RETAINING RING |
| 11 | 1 | 7133-8440 | U-CUP |
| 12 | 1 | X-9172 | SHCS 1/4 - 20 X 1.25 |
| 13 | 1 | X-9207 ASSY | EXTENSION SPRING |
| 14 | 1 | 1656-2300 | SADDLE |
| 15 | 1 | 2190249 | O-RING 1.31 X 1.06 X .12 |
| 16 | 1 | HA-18 | COUPLER W/ DUST COVER |
| 17 | 1 | 2470309 | PIPE PLUG 3/8 NPTF |