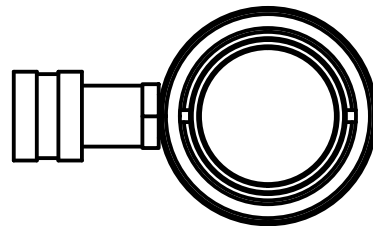


2

1

B

B



Ø2.24
ROD

2-11.5 NPT

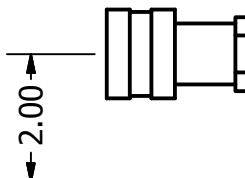
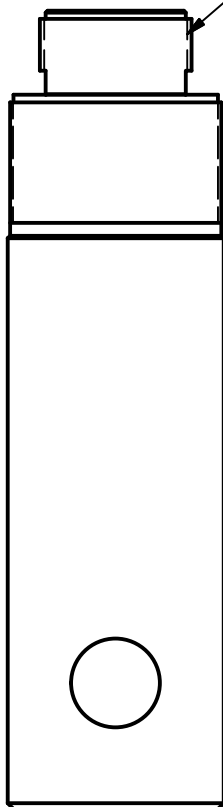
3 5/16-12 UNS 2A

2.00

RETRACTED 12.50 IN
EXTENDED 18.50 IN

Ø3.38
HOUSING

2.00

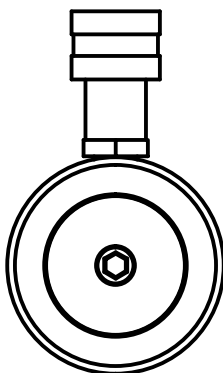


↕

↕

A

A



THIS DRAWING IS THE PROPERTY OF RAM-PAC INT'L AND IS NOT TO BE USED IN ANY MANNER DETRIMENTAL TO THEIR INTEREST

RAM-PAC, INT'L.
15600 W. LINCOLN AVE.
NEW BERLIN, WI 53151

TITLE: 25 TON 6 IN STRK AUTO CYL

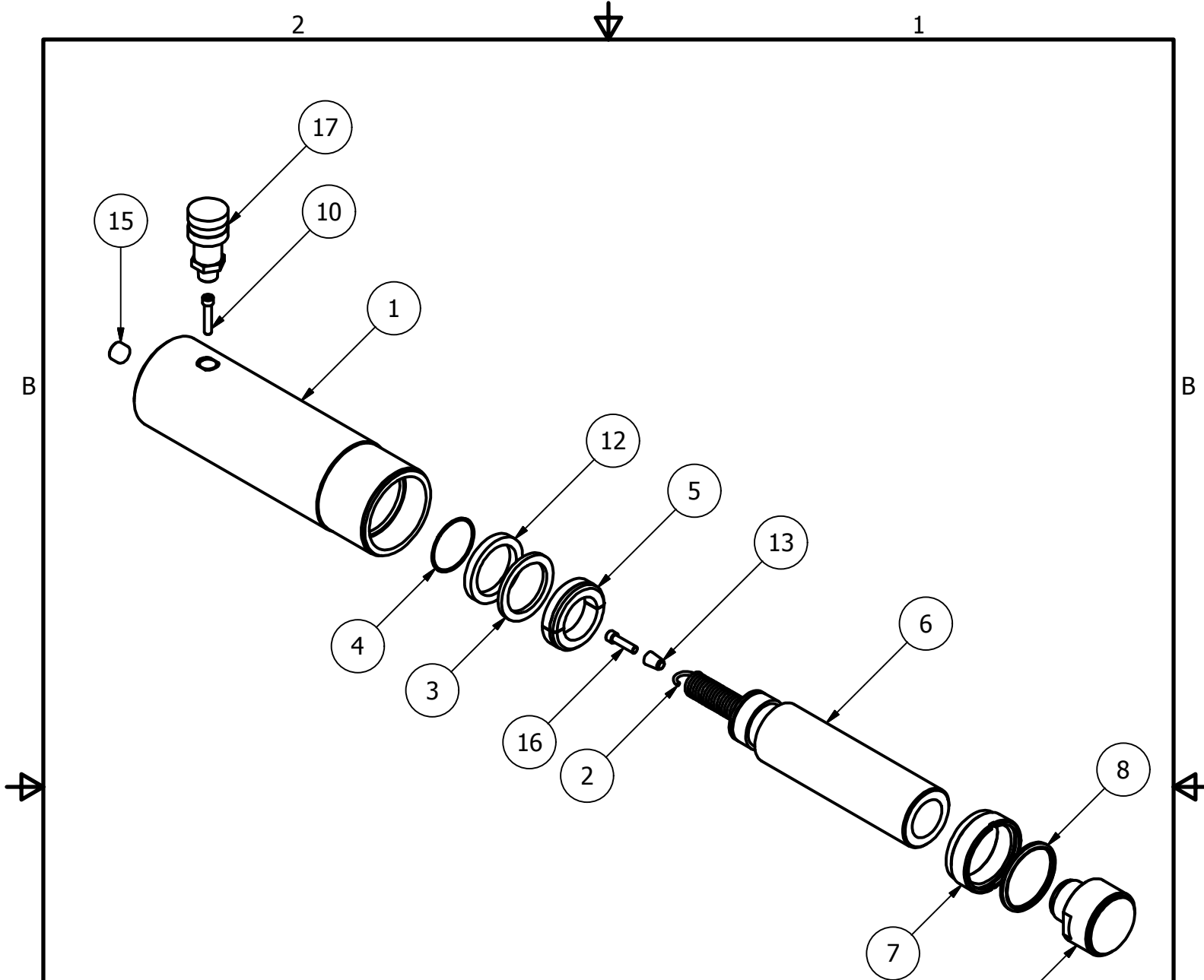
REVISION: -

EST WT: 24 LBS

2

1

↕



ITEM	QTY	PART NUMBER	DESCRIPTION
1	1	X-9183	CYLINDER HOUSING
2	1	X-9188	EXTENSION SPRING
3	1	X-9191	BACK-UP RING
4	1	7730-1875	RETAINING RING
5	1	X-9190	BEARING
6	1	X-9177-1	PLUNGER
7	1	1654-2203	GUIDE - PLUNGER
8	1	X-6907-14	WIPER RINGS
10	1	X-9172	SHCS 1/4 - 20 UNC-2A X 1.25
12	1	7133-8440	U-CUP
13	1	X-7193	SPRING SLEEVE
14	1	X-6448	PLUNGER HEAD
15	1	2470309	PIPE PLUG 3/8 NPTF
16	1	2220551	SHCS 1/4 - 20 UNC-2A X 1.00
17	1	HA-18	COUPLER W/ DUST COVER