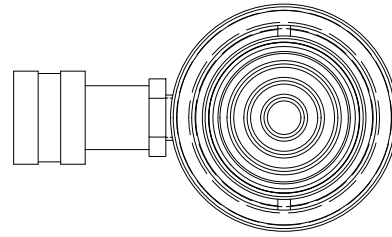


2

1

B

B



Ø2.24
ROD

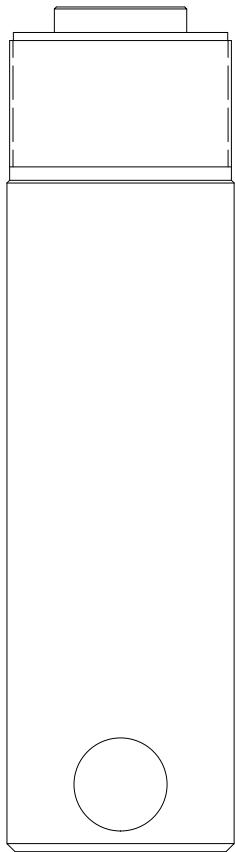
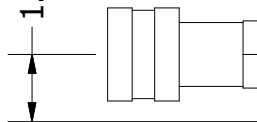
3 5/16-12 UNS - 2A

2.00

Ø3.38
HOUSING

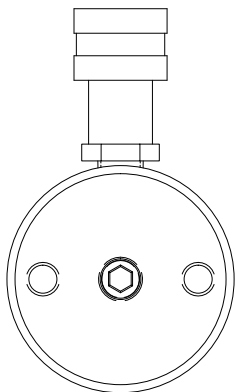
RETRACTED 12.57 IN
EXTENDED 20.57 IN

1.00



A

A



2

1

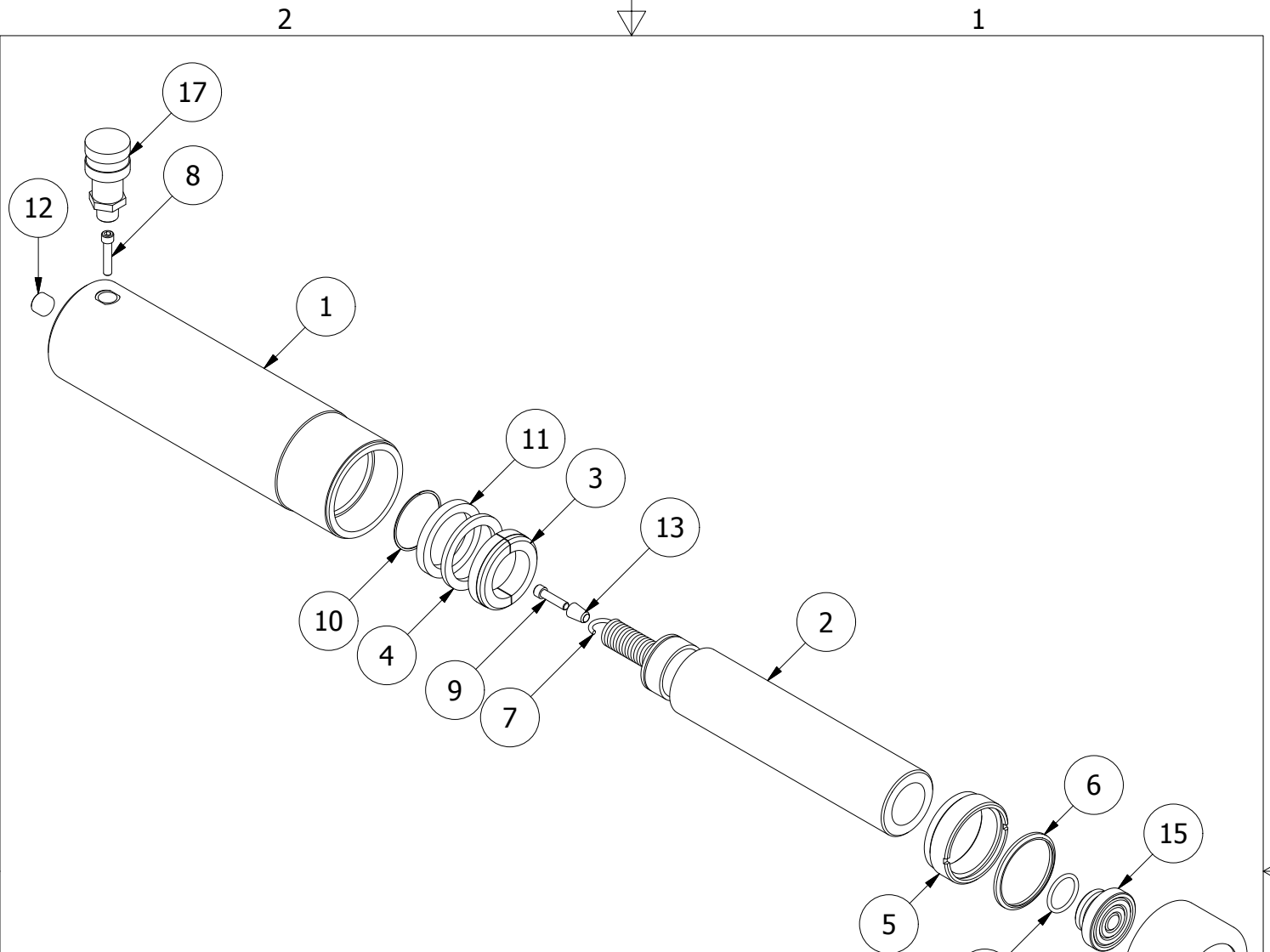
THIS DRAWING IS THE PROPERTY OF RAM-PAC INT'L AND IS NOT TO BE USED IN ANY MANNER DETRIMENTAL TO THEIR INTEREST

RAM-PAC, INT'L.
15600 W. LINCOLN AVE.
NEW BERLIN, WI 53151

TITLE: 25 TON 8 IN STROKE CYL

REVISION: -

EST WT: 26 LBS



REBUILD KIT: X8334

RC-25-SA-8 Parts List

ITEM	QTY	PART NUMBER	DESCRIPTION
1	1	X9196-2	CYLINDER HOUSING
2	1	X-9177-2	PLUNGER
3	1	X-9190	BEARING
4	1	X-9191	BACK-UP RING
5	1	1654-2203	GUIDE - PLUNGER
6	1	X-6907-14	WIPER RINGS
7	1	X-9188	EXTENSION SPRING
8	1	X-9172	SHCS 1/4 - 20 X 1.25
9	1	2220551	SHCS 1/4 - 20 X 1.00
10	1	7730-1875	RETAINING RING
11	1	7133-8440	U-CUP
12	1	2470309	PIPE PLUG 3/8 NPTF
13	1	X-7193	SPRING SLEEVE
14	1	X-9391	THREAD PROTECTOR
15	1	1656-2300	SADDLE
16	1	2190249	O-RING 1.31 X 1.06 X .12
17	1	HA-18	COUPLER W/ DUST COVER