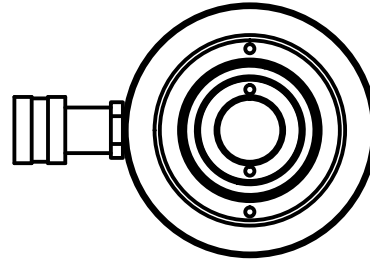


2

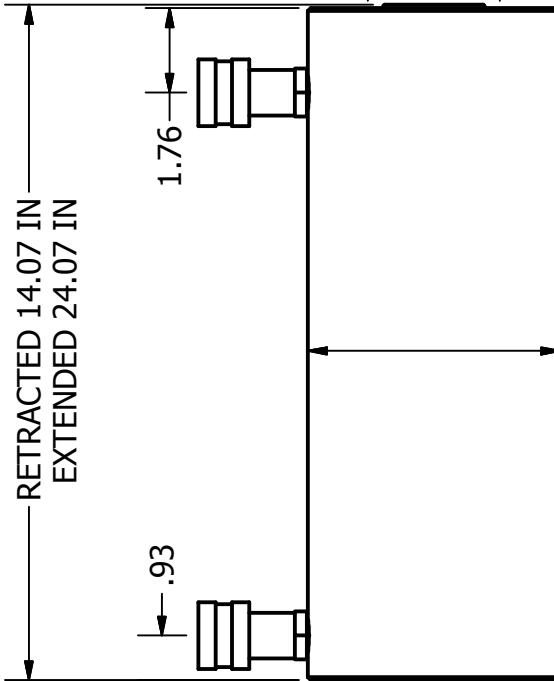
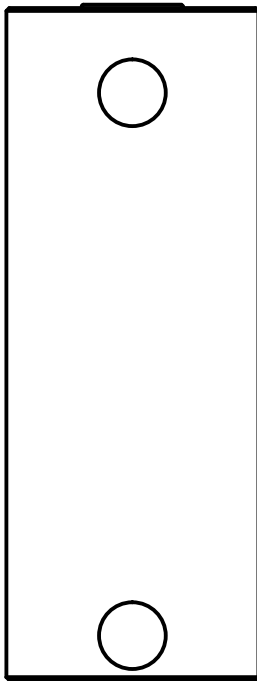
1



B

B

Ø2.75
ROD



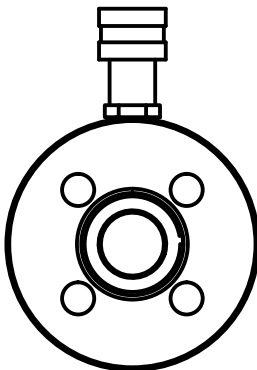
Ø5.25
HOUSING

↕

↕

A

A



2

1

↕

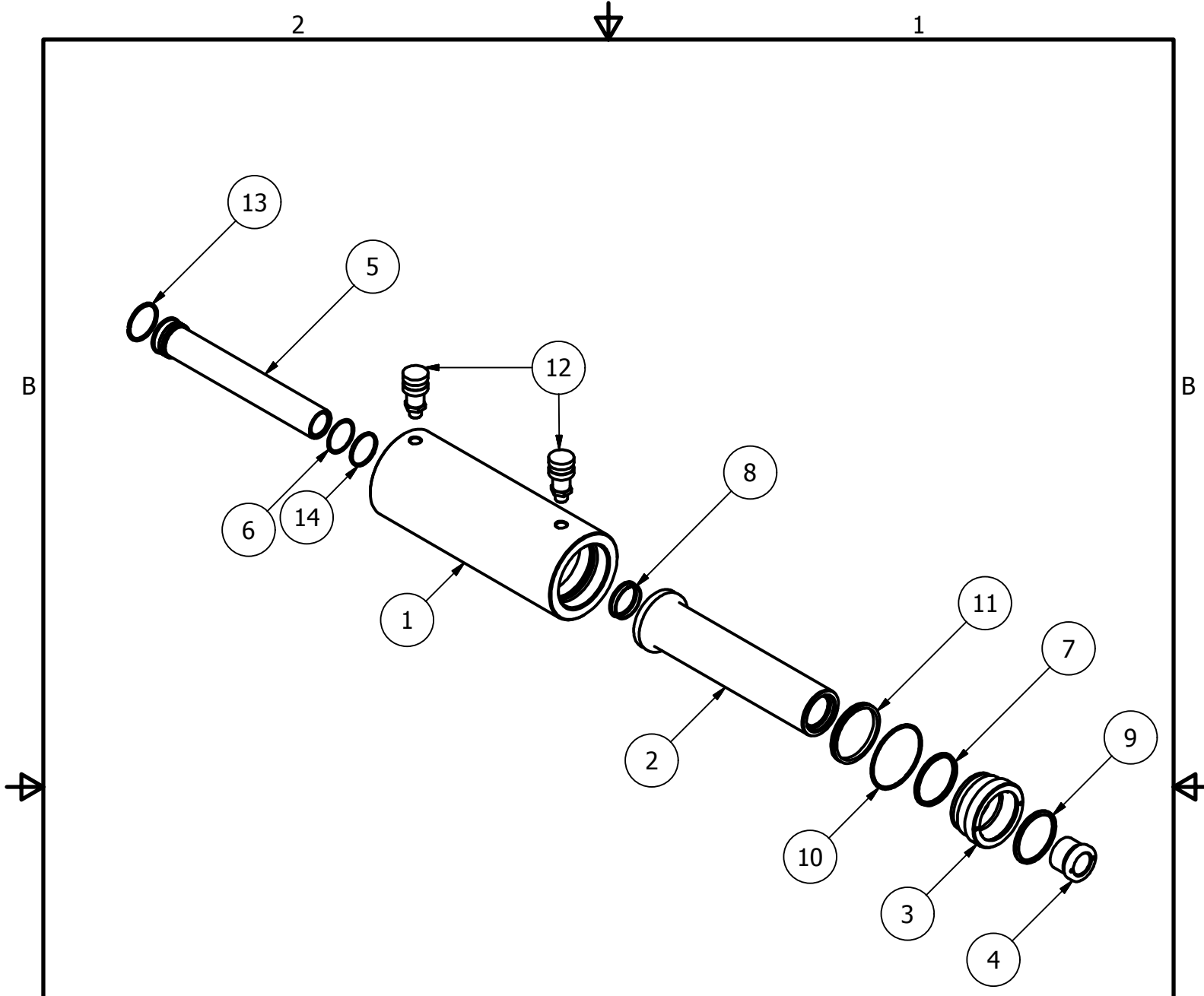
THIS DRAWING IS THE PROPERTY OF RAM-PAC INT'L AND IS NOT
TO BE USED IN ANY MANNER DETRIMENTAL TO THEIR INTEREST

RAM-PAC, INT'L.
15600 W. LINCOLN AVE.
NEW BERLIN, WI 53151

TITLE: 30 TON 10 IN STRK CNTR HL

REVISION: -

EST WT: 105 LBS



ITEM	QTY	PART NUMBER	DESCRIPTION
1	1	X-7986-10	CYL HOUSING 30 TON CH
2	1	X7987-10	RAM PLUNGER
3	1	X-7988	GLAND NUT
4	1	X-7973	PLAIN TOP, 30 TON CH
5	1	X-7970-10	CENTER POST
6	1	X-7878-4	BACK-UP RINGS
7	1	X-7011-15	U-CUP
8	1	X-7011-14	U-CUP
9	1	X-6907-4	WIPER RINGS
10	1	X-6477-45	O-RING 3.875 X 3.609 X .139 CS
11	1	X-6437-21	G.T. RING (PISTION TYPE)
12	2	HA-18	COUPLER W/ DUST COVER
13	1	H-5565	RETAINING RING
14	1	2190024	O-RING