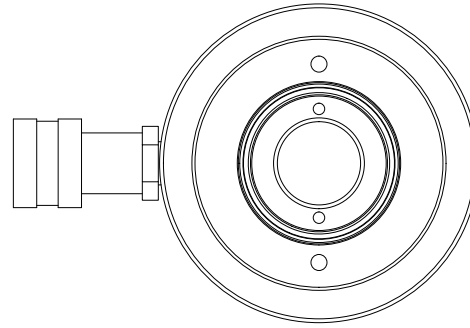


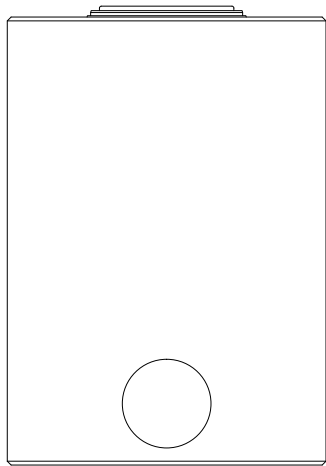
2

1



B

B

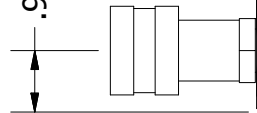


Ø2.38  
ROD

Ø4.98  
HOUSING

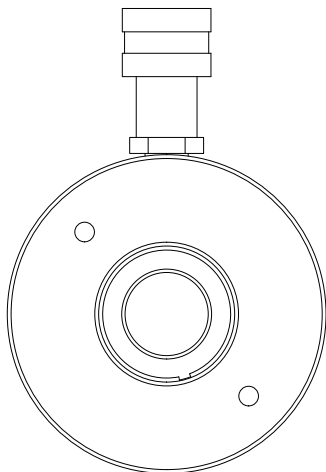
RETRACTED 7.17 IN  
EXTENDED 9.67 IN

.96



A

A



2

1



THIS DRAWING IS THE PROPERTY OF RAM-PAC INT'L AND IS NOT TO BE USED IN ANY MANNER DETRIMENTAL TO THEIR INTEREST

**RAM-PAC, INT'L.**  
15600 W. LINCOLN AVE.  
NEW BERLIN, WI 53151

**TITLE: 30 TON 2.5 IN STRK CNTR HL**

**REVISION: -**

**EST WT: 30 LBS**

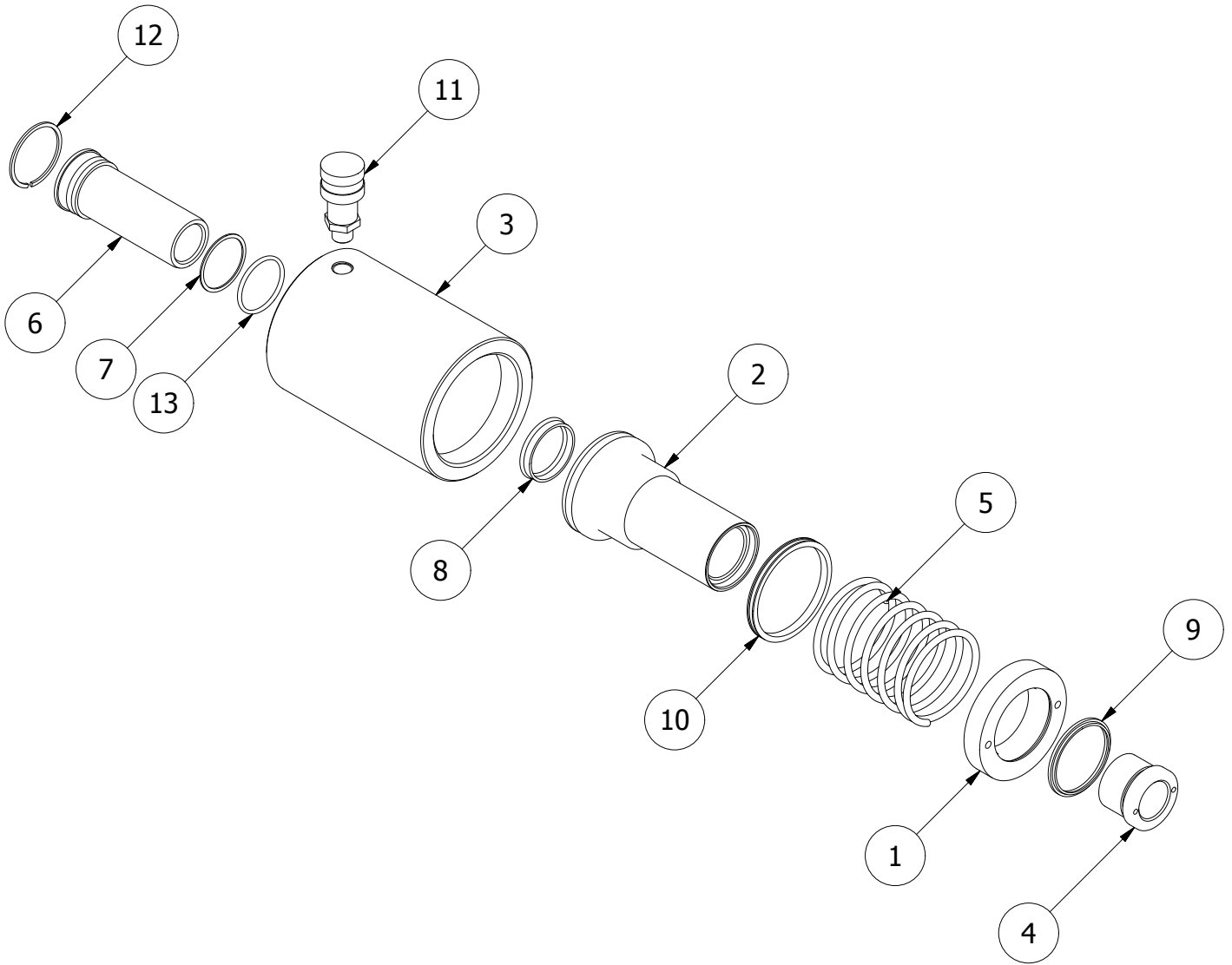
2



1

B

B



## REBUILD KIT: X7983

ITEM	QTY	PART NUMBER	DESCRIPTION
1	1	X-8180	GLAND NUT
2	1	X-8179	PLUNGER
3	1	X-8178	RAM BODY, 30 TON S.A.
4	1	X-7973	PLAIN TOP, 30 TON CH
5	1	X-7972	RETURN SPRING
6	1	X-7970	CENTER POST 30 TON
7	1	X-7878-4	BACK-UP RINGS
8	1	X-7011-14	U-CUP
9	1	X6907-15	WIPER 2.375
10	1	X-6437-21	G.T. RING (PISTION TYPE)
11	1	HA-18	COUPLER W/ DUST COVER
12	1	H-5565	RETAINING RING
13	1	2190024	O-RING

A

A

2



1