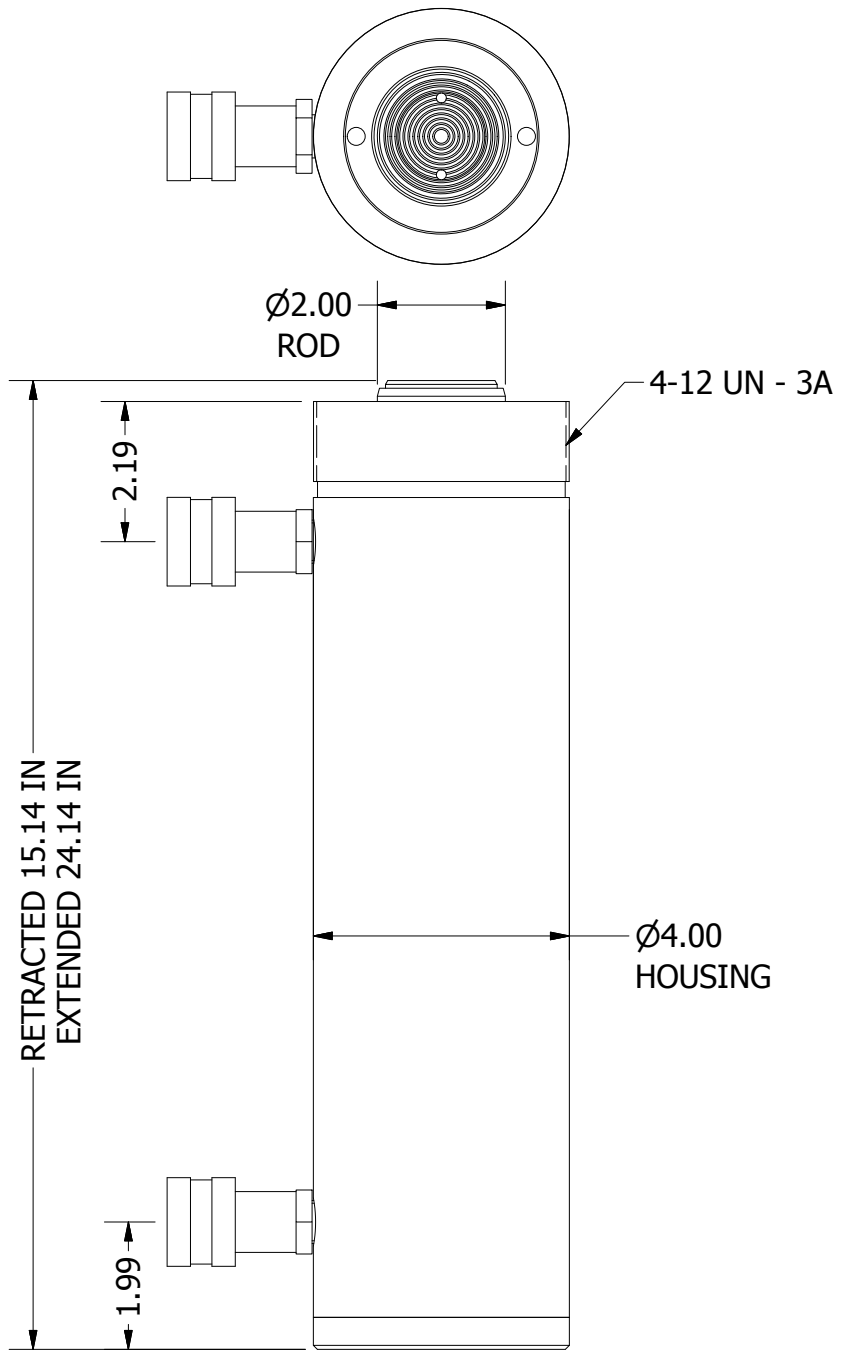
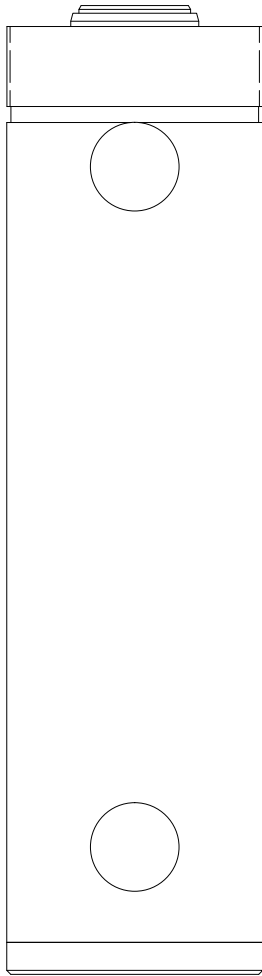


2

1

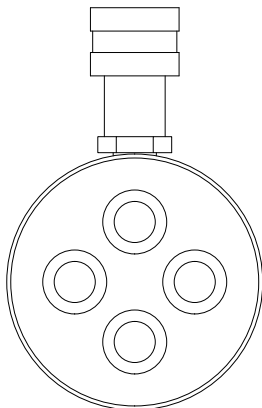
B

B



A

A



2

1

THIS DRAWING IS THE PROPERTY OF RAM-PAC INT'L AND IS NOT TO BE USED IN ANY MANNER DETRIMENTAL TO THEIR INTEREST

RAM-PAC, INT'L.
 15600 W. LINCOLN AVE.
 NEW BERLIN, WI 53151

TITLE: 30 TON 9 IN STROKE CYL

REVISION: -

EST WT: 47 LBS

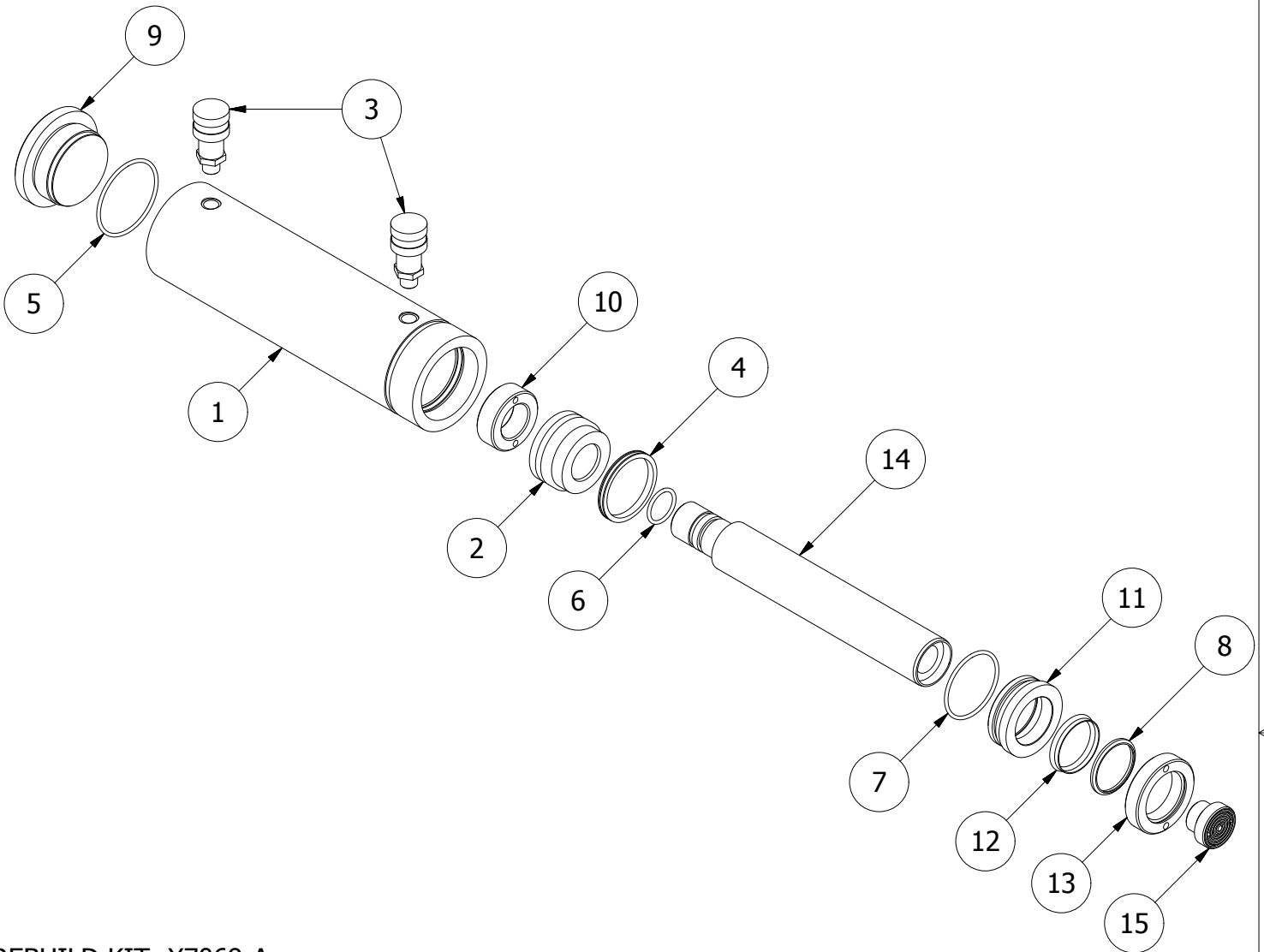
2



1

B

B



REBUILD KIT: X7069-A

ITEM	QTY	PART NUMBER	DESCRIPTION
1	1	X-6919	CYLINDER
2	1	X-6921	PLUNGER GUIDE RING
3	2	HA-18	COUPLER W/ DUST COVER
4	1	X-6437-3	G.T. RING (PISTION TYPE)
5	1	X-6477-36	O-RING 3.25 X 2.984 X .139CS
6	1	X-6477-37	O-RING 1.5 X 1.234 X .139CS
7	1	X-6477-8	O-RING 2.875 X 2.609 X .139CS
8	1	X-6907-3	WIPER RINGS
9	1	X-6918	RAM BASE
10	1	X-6923	RETAINING NUT
11	1	X-6971	GLAND RING
12	1	X-7011-4	U-CUP
13	1	X-8167	GLAND NUT
14	1	X-8173	PLUNGER
15	1	X-8171	PLUNGER TOP

2



1

A

A