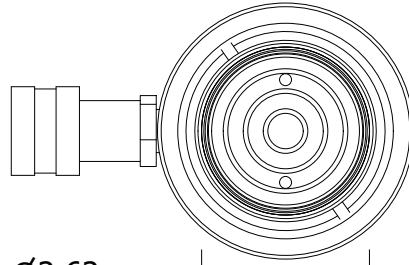
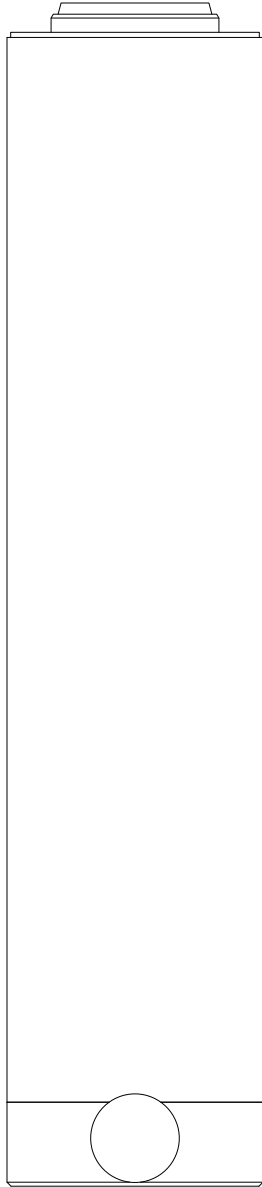


2

1

B

B



Ø2.62  
ROD

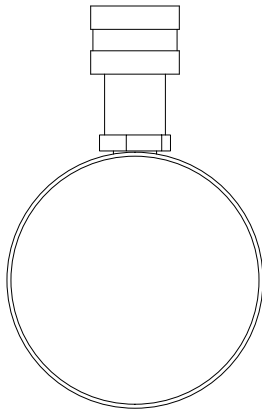
Ø4.00  
HOUSING

RETRACTED 18.49 IN  
EXTENDED 32.49 IN

.75

A

A



2

1

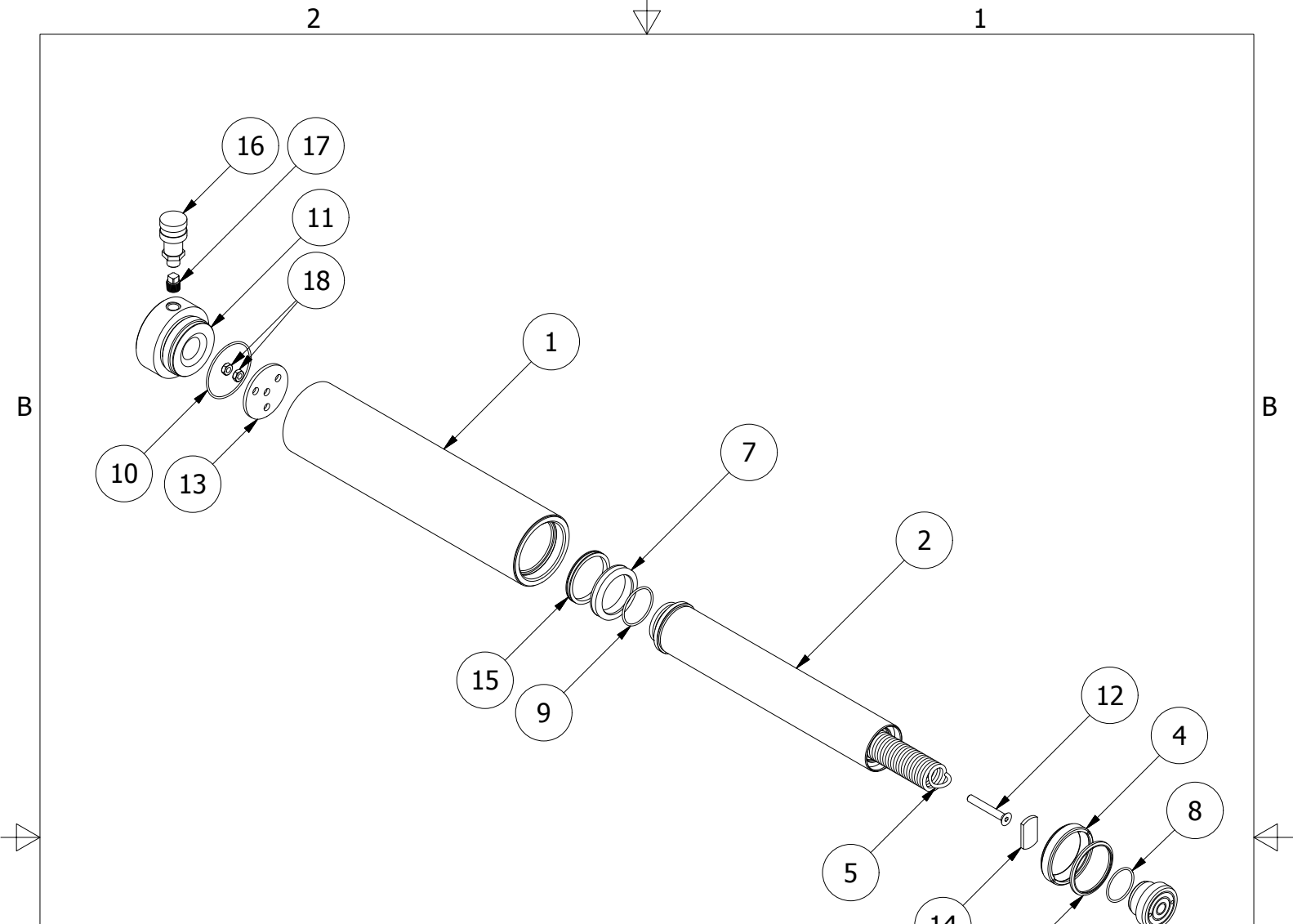
THIS DRAWING IS THE PROPERTY OF RAM-PAC INT'L AND IS NOT TO BE USED IN ANY MANNER DETRIMENTAL TO THEIR INTEREST

**RAM-PAC, INT'L.**  
15600 W. LINCOLN AVE.  
NEW BERLIN, WI 53151

TITLE: 30 TON 14 IN STROKE CYL

REVISION: -

EST WT: 57 LBS



REBUILD KIT: X7002

ITEM	QTY	PART NUMBER	DESCRIPTION
1	1	X-8213	30 TON RAM CYL
2	1	X-8212	PLUNGER
3	1	X-8210	RAM PLUNGER HEAD
4	1	X-8186-3	GLAND NUT
5	1	X-7185-1	PLUNGER RETURN SPRING
6	1	X-6907-8	WIPER RINGS
7	1	X-6678-3	BRONZE WEAR RING
8	1	X-6477-22	O-RING
9	1	X-6477-20	O-RING
10	1	X-6477-18	O-RING
11	1	X-6452	RAM CYLINDER BASE
12	1	X-6451	FLAT HEAD SCREW
13	1	X-6449-2	RETURN SPRING PLATE
14	1	X-6443-3	SPRING ANCHOR PLATE
15	1	X-6437-3	G.T. RING (PISTION TYPE)
16	1	HA-18	COUPLER W/ DUST COVER
17	1	2470172	FITTING PLUG
18	2	2350057	JAM NUT