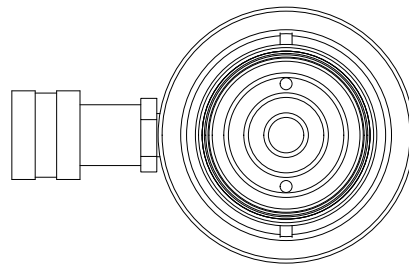


2

1



B

B



Ø2.62
ROD

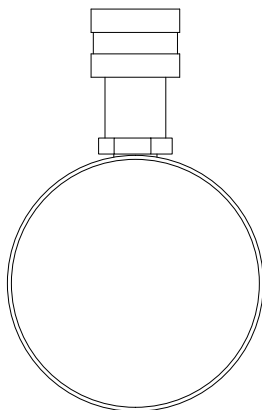
Ø4.00
HOUSING

RETRACTED 12.28 IN
EXTENDED 20.28 IN

.75

A

A



2

1

THIS DRAWING IS THE PROPERTY OF RAM-PAC INT'L AND IS NOT TO BE USED IN ANY MANNER DETRIMENTAL TO THEIR INTEREST

RAM-PAC, INT'L.
15600 W. LINCOLN AVE.
NEW BERLIN, WI 53151

TITLE: 30 TON 8 IN STROKE CYL

REVISION: -

EST WT: 40 LBS

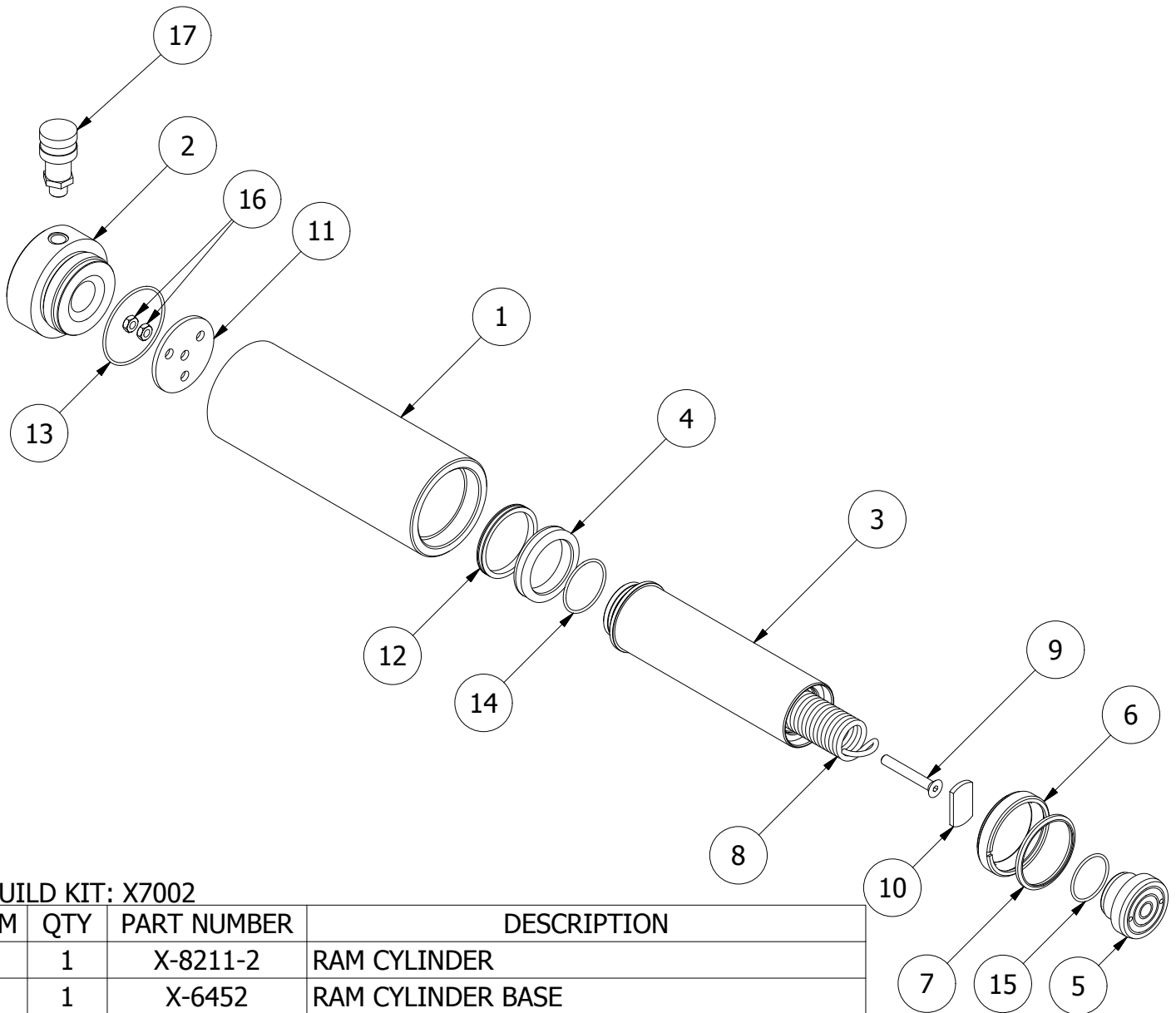
2



1

B

B



REBUILD KIT: X7002

ITEM	QTY	PART NUMBER	DESCRIPTION
1	1	X-8211-2	RAM CYLINDER
2	1	X-6452	RAM CYLINDER BASE
3	1	X-8208-2	RAM PLUNGER
4	1	X-6678-3	BRONZE WEAR RING
5	1	X-8210	RAM PLUNGER HEAD
6	1	X-8186-3	GLAND NUT
7	1	X-6907-8	WIPER RINGS
8	1	X-6456	RETURN SPRING
9	1	X-6451	FLAT HEAD SCREW
10	1	X-6443-3	SPRING ANCHOR PLATE
11	1	X-6449-2	RETURN SPRING PLATE
12	1	X-6437-3	G.T. RING (PISTION TYPE)
13	1	X-6477-18	O-RING
14	1	X-6477-20	O-RING
15	1	X-6477-22	O-RING
16	2	2350057	JAM NUT
17	1	HA-18	COUPLER W/ DUST COVER

A

A

2



1