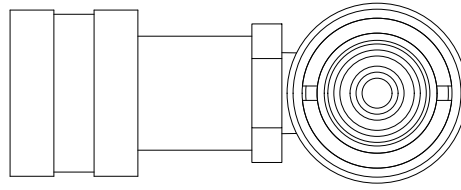


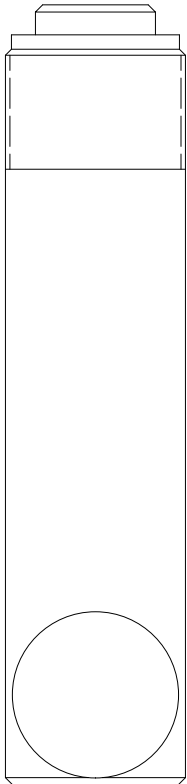
2

1



B

B



Ø1.0  
ROD

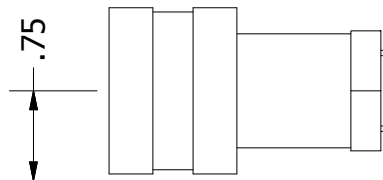
1 1/2-16 UN - 2A

1.12

Ø1.50  
HOUSING

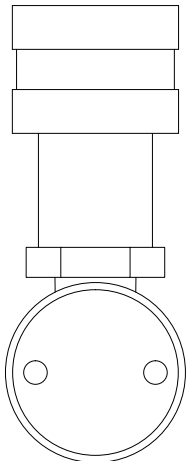
RETRACTED 6.50 IN  
EXTENDED 9.50 IN

.75



A

A



2

1

THIS DRAWING IS THE PROPERTY OF RAM-PAC INT'L AND IS NOT TO BE USED IN ANY MANNER DETRIMENTAL TO THEIR INTEREST

**RAM-PAC, INT'L.**  
15600 W. LINCOLN AVE.  
NEW BERLIN, WI 53151

**TITLE: 5 TON 3 IN STROKE CYL**

REVISION: -

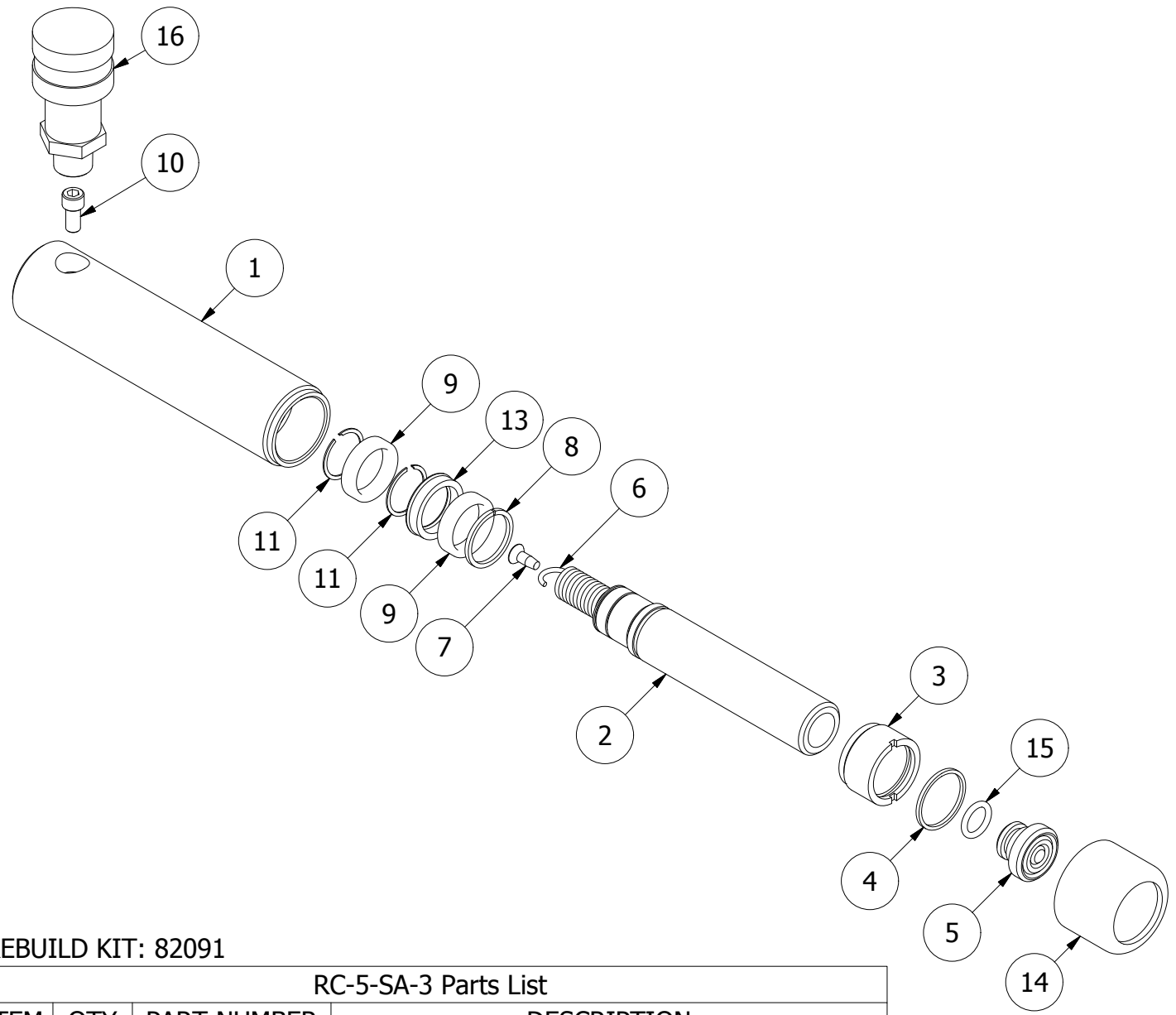
EST WT: **3.5 LBS**

2

1

B

B



REBUILD KIT: 82091

RC-5-SA-3 Parts List

ITEM	QTY	PART NUMBER	DESCRIPTION
1	1	1651-1303	Cylinder
2	1	1651-1502	RAM
3	1	1651-2202	GUIDE-PLUNGER
4	1	7402-2170	QUAD RING
5	1	1651-2300	SADDLE
6	1	9926-0030	SPRING-EXTENSION
7	1	8321-5081	SELF-TAPPING SCREW #10-24 X .5
8	1	7750-1001	STOP RING
9	2	1620-2001	BEARING
10	1	2220399	SHCS .25-20 x .75 GR8
11	2	7730-0875	RETAINING RING
13	1	7132-2260	U-CUP
14	1	X-9388	THREAD PROTECTOR
15	1	X-6477-46	O-RING
16	1	HA-18	COUPLER W/ DUST COVER

2

1

A

A