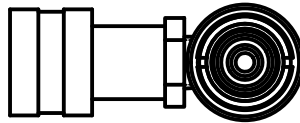


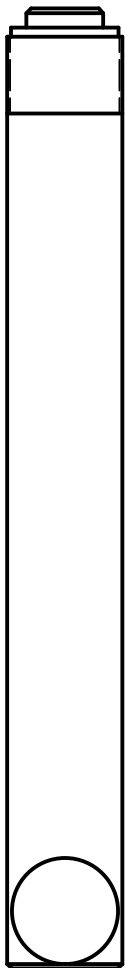
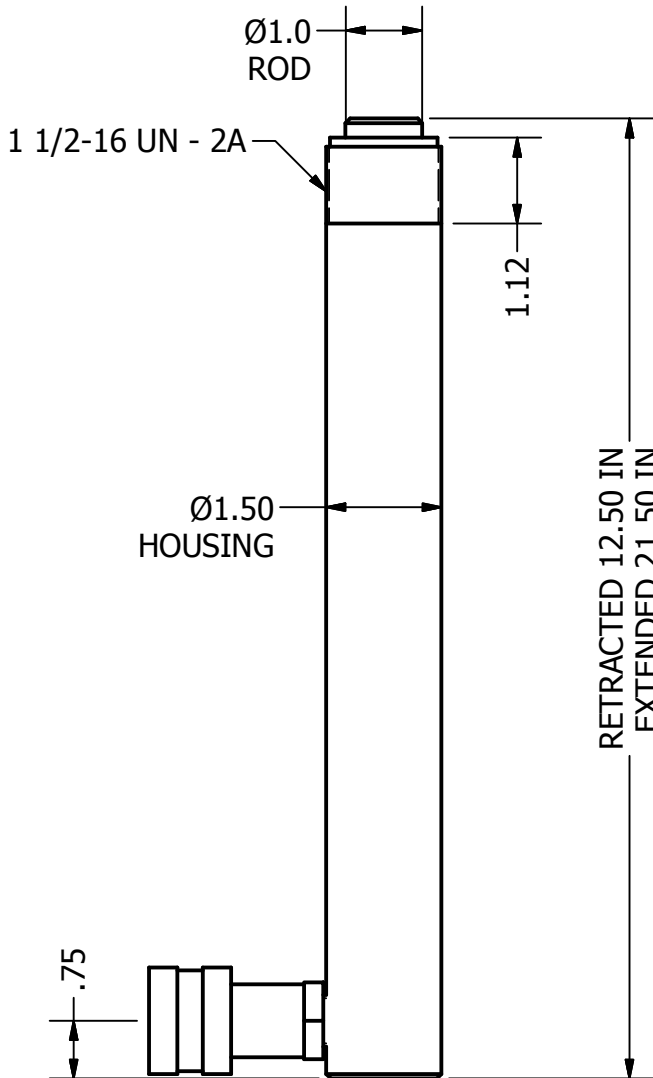
2

1



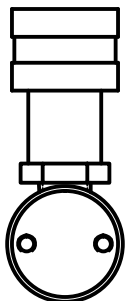
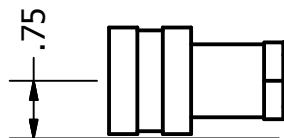
B

B



A

A



2

1

THIS DRAWING IS THE PROPERTY OF RAM-PAC INT'L AND IS NOT TO BE USED IN ANY MANNER DETRIMENTAL TO THEIR INTEREST

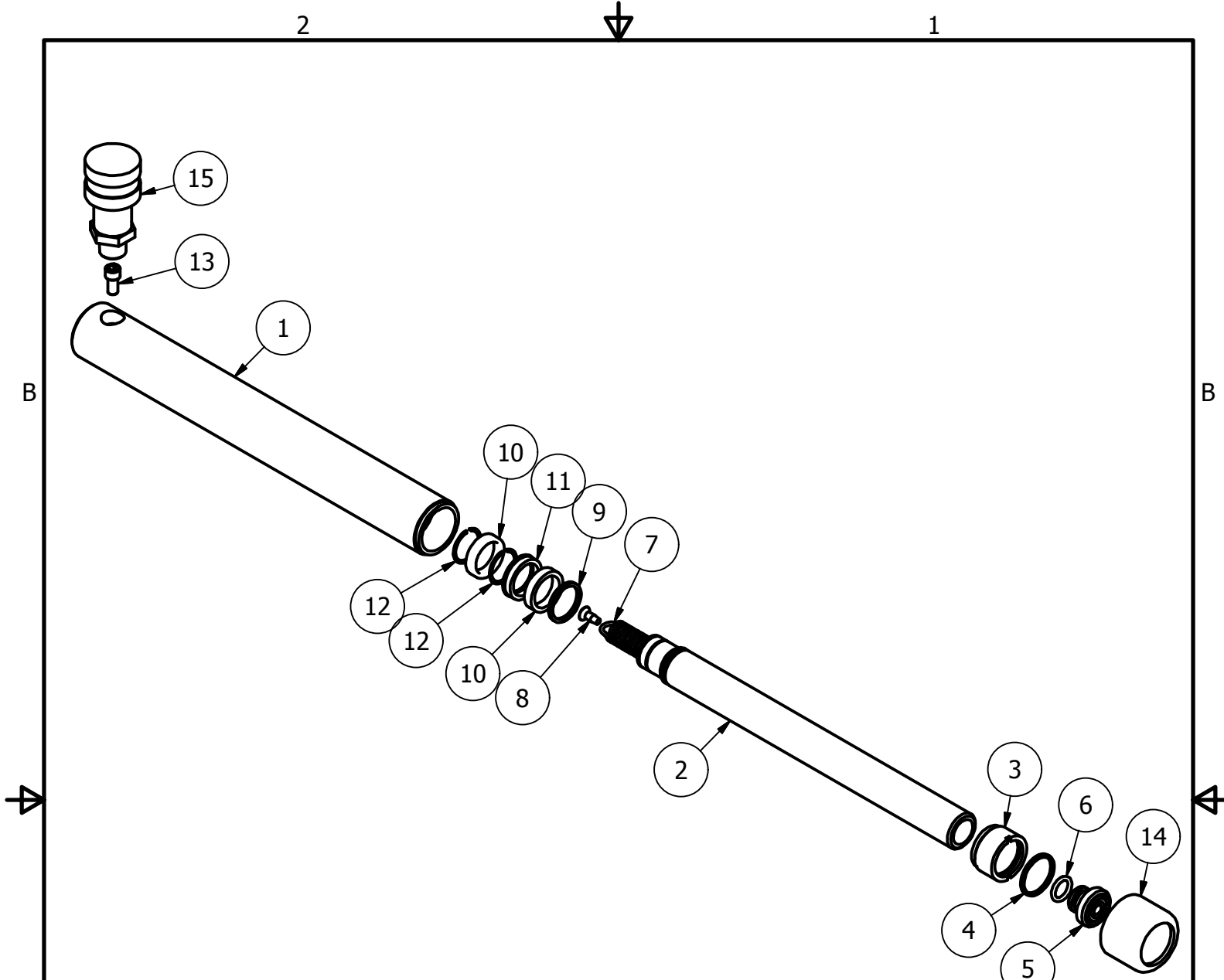
**RAM-PAC, INT'L.**  
 15600 W. LINCOLN AVE.  
 NEW BERLIN, WI 53151

TITLE: 5 TON 9 IN STROKE CYL

REVISION: -

EST WT: 7 LBS

4



RC-5-SA-9 Parts List

ITEM	QTY	PART NUMBER	DESCRIPTION
1	1	1651-1304-9	CYLINDER HOUSING
2	1	1651-1503-9	PLUNGER
3	1	1651-2202	GUIDE-PLUNGER
4	1	7402-2170	QUAD RING
5	1	1651-2300	SADDLE
6	1	X-6477-46	O-RING
7	1	9926-0024-7	EXTENSION SPRING
8	1	8321-5081	SELF-TAPPING SCREW #10-24 X .5
9	1	7750-1001	STOP RING
10	2	1620-2001	BEARING
11	1	7132-2260	U-CUP
12	2	7730-0875	RETAINING RING
13	1	2220399	SHCS .25-20 x .75 GR8
14	1	X-9388	THREAD PROTECTOR
15	1	HA-18	COUPLER W/ DUST COVER