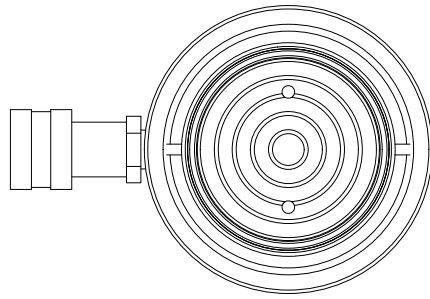


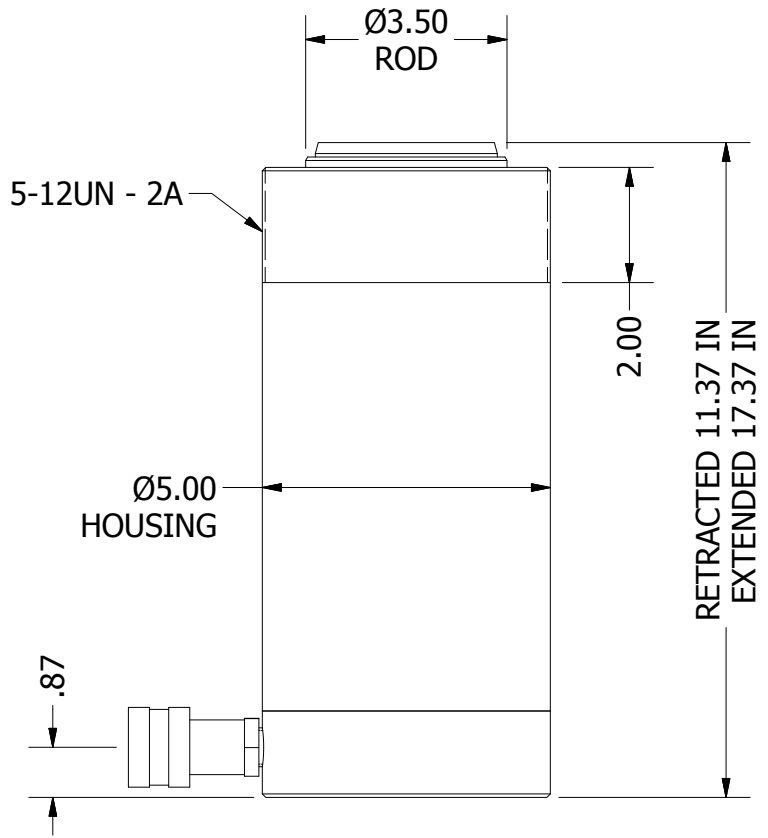
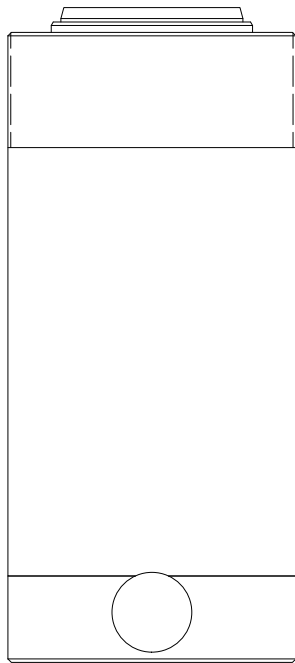
2

1



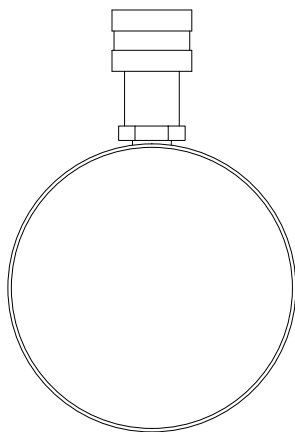
B

B



A

A



2

1

THIS DRAWING IS THE PROPERTY OF RAM-PAC INT'L AND IS NOT TO BE USED IN ANY MANNER DETRIMENTAL TO THEIR INTEREST

RAM-PAC, INT'L.
 15600 W. LINCOLN AVE.
 NEW BERLIN, WI 53151

TITLE: RC-50-SA-6T

REVISION: -

EST WT: 53 LBS

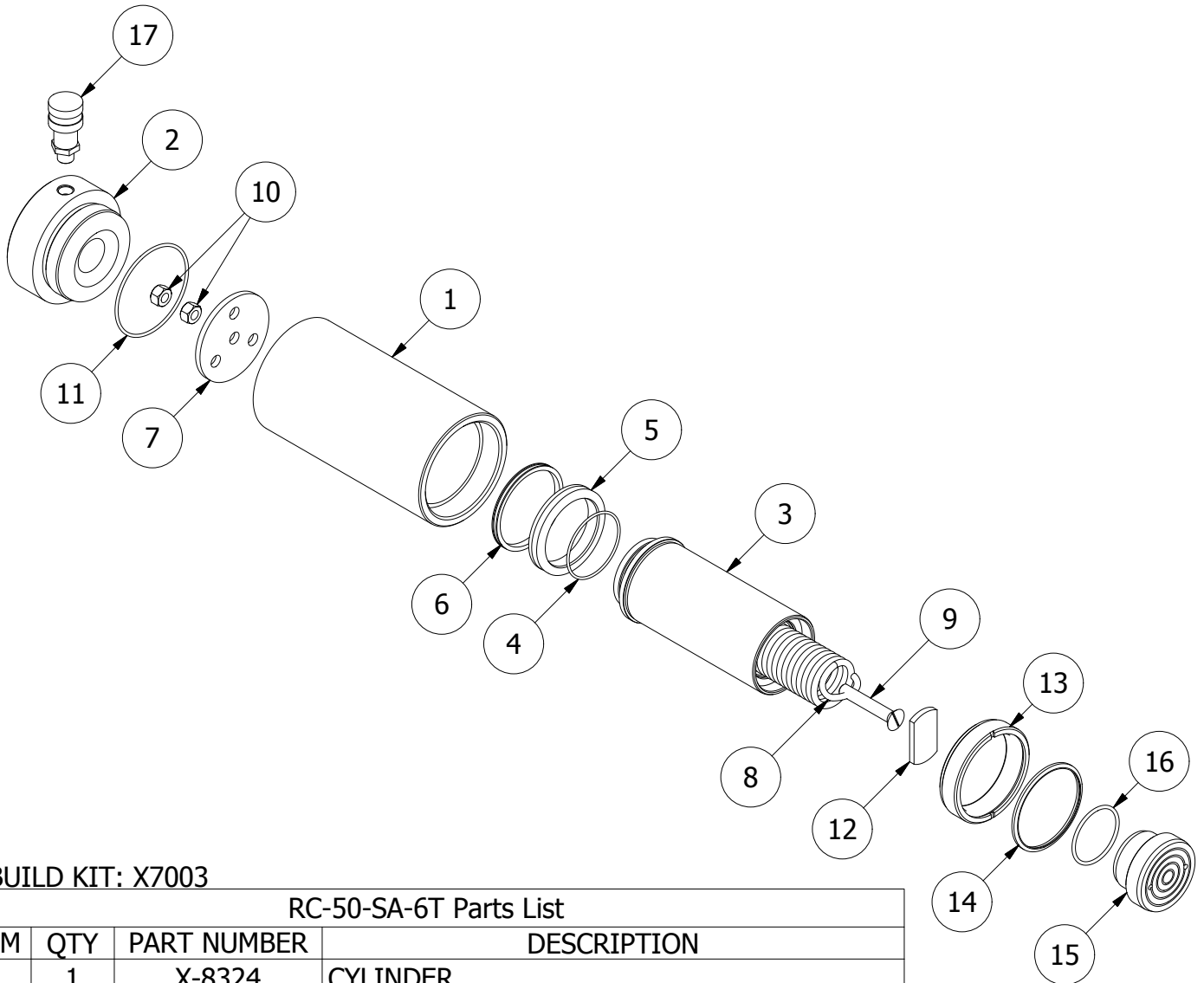
2



1

B

B



REBUILD KIT: X7003

RC-50-SA-6T Parts List

ITEM	QTY	PART NUMBER	DESCRIPTION
1	1	X-8324	CYLINDER
2	1	X-6460-2	CYLINDER BASE
3	1	X-8217-1	PLUNGER
4	1	X-6477-21	O-RING 3.00 X 2.80 X .103 90D
5	1	X-6678-4	BRONZE WEAR RING
6	1	X-6437-4	G.T. RING (PISTION TYPE)
7	1	X-6449-3	RETURN SPRING PLATE
8	1	X-6465	SPRING
9	1	X-6466	FHCS 1/2-13 X 3.00
10	2	2350036	JAM NUT
11	1	2190054	O-RING 4.12 X 3.87 X .128 70D
12	1	X-6443-4	SPRING ANCHOR PLATE
13	1	X-8186-4	GLAND NUT
14	1	X-6907-6	WIPER RINGS
15	1	X-8218	PLUNGER HEAD
16	1	2190113	O-RING 2.625 X 2.359 X .139 70D
17	1	HA-18	COUPLER W/ DUST COVER

2



1

A

A