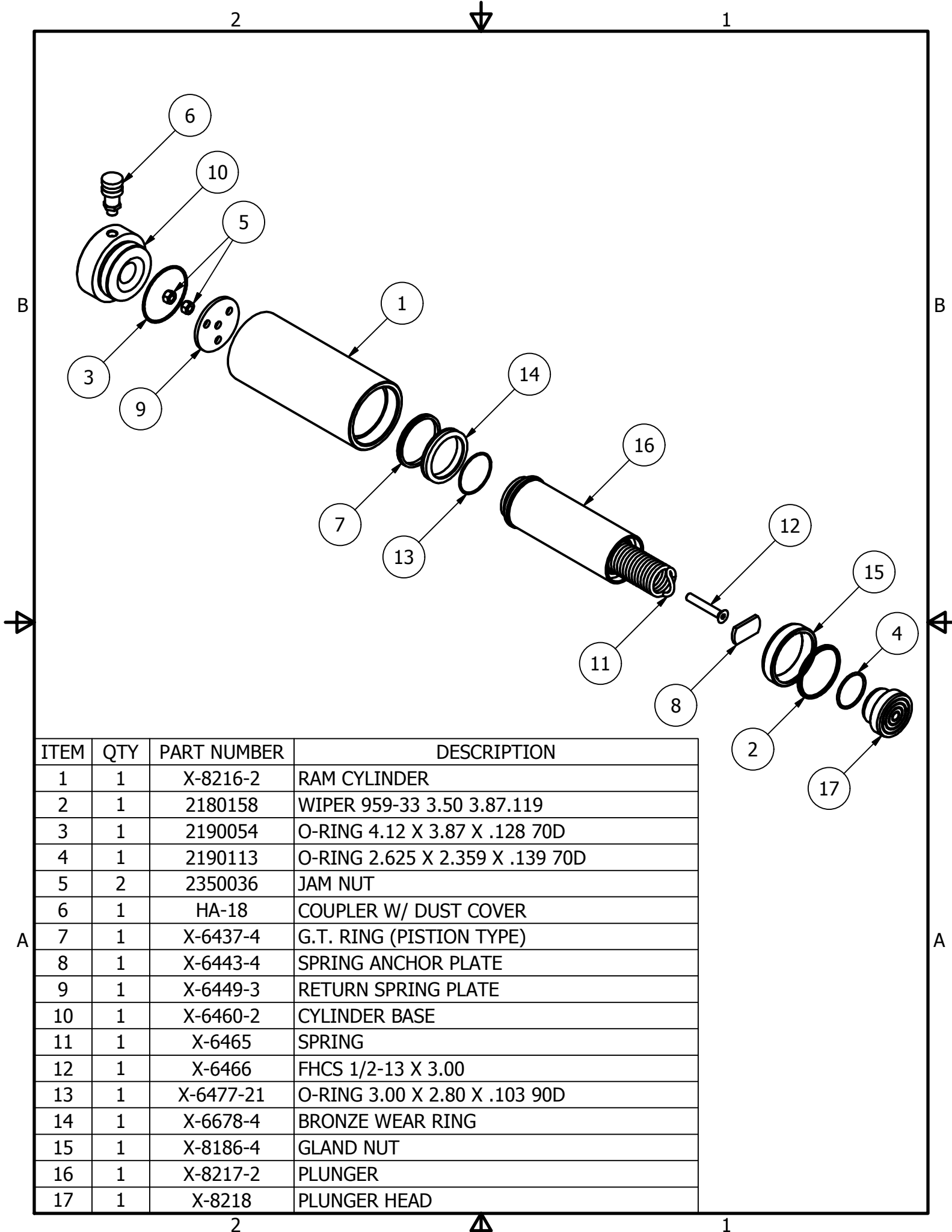


THIS DRAWING IS THE PROPERTY OF RAM-PAC INT'L AND IS NOT TO BE USED IN ANY MANNER DETRIMENTAL TO THEIR INTEREST

RAM-PAC, INT'L. 15600 W. LINCOLN AVE. NEW BERLIN, WI 53151	
TITLE:	50 TON 8 IN STROKE CYL
REVISION:	-
EST WT:	62 LBS



ITEM	QTY	PART NUMBER	DESCRIPTION
1	1	X-8216-2	RAM CYLINDER
2	1	2180158	WIPER 959-33 3.50 3.87.119
3	1	2190054	O-RING 4.12 X 3.87 X .128 70D
4	1	2190113	O-RING 2.625 X 2.359 X .139 70D
5	2	2350036	JAM NUT
6	1	HA-18	COUPLER W/ DUST COVER
7	1	X-6437-4	G.T. RING (PISTION TYPE)
8	1	X-6443-4	SPRING ANCHOR PLATE
9	1	X-6449-3	RETURN SPRING PLATE
10	1	X-6460-2	CYLINDER BASE
11	1	X-6465	SPRING
12	1	X-6466	FHCS 1/2-13 X 3.00
13	1	X-6477-21	O-RING 3.00 X 2.80 X .103 90D
14	1	X-6678-4	BRONZE WEAR RING
15	1	X-8186-4	GLAND NUT
16	1	X-8217-2	PLUNGER
17	1	X-8218	PLUNGER HEAD