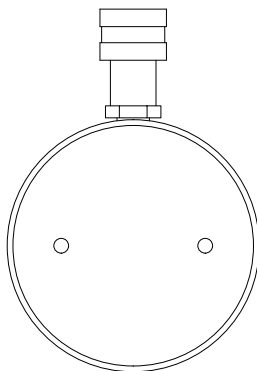
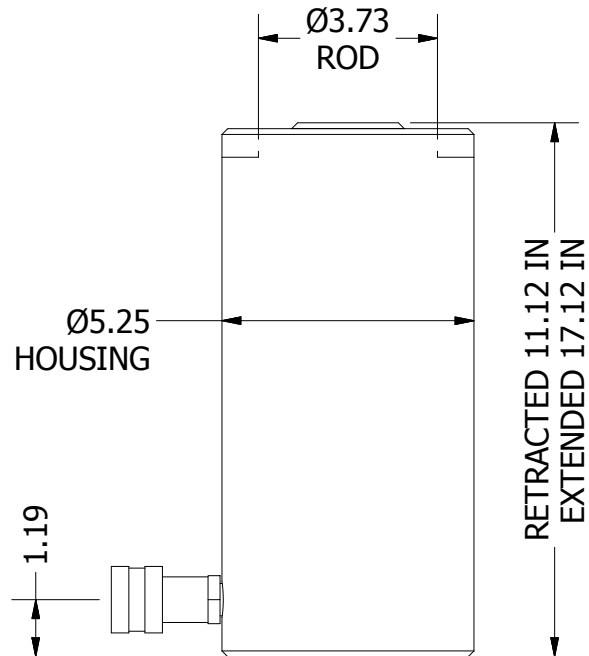
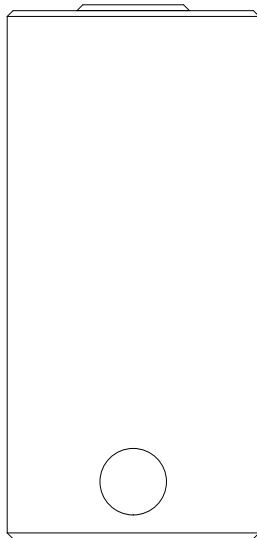
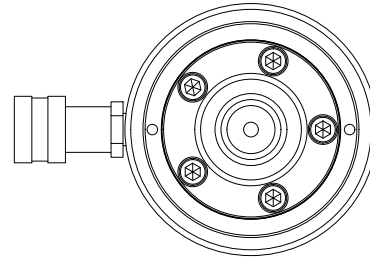


2

1



THIS DRAWING IS THE PROPERTY OF RAM-PAC INT'L AND IS NOT TO BE USED IN ANY MANNER DETRIMENTAL TO THEIR INTEREST

**RAM-PAC, INT'L.**  
15600 W. LINCOLN AVE.  
NEW BERLIN, WI 53151

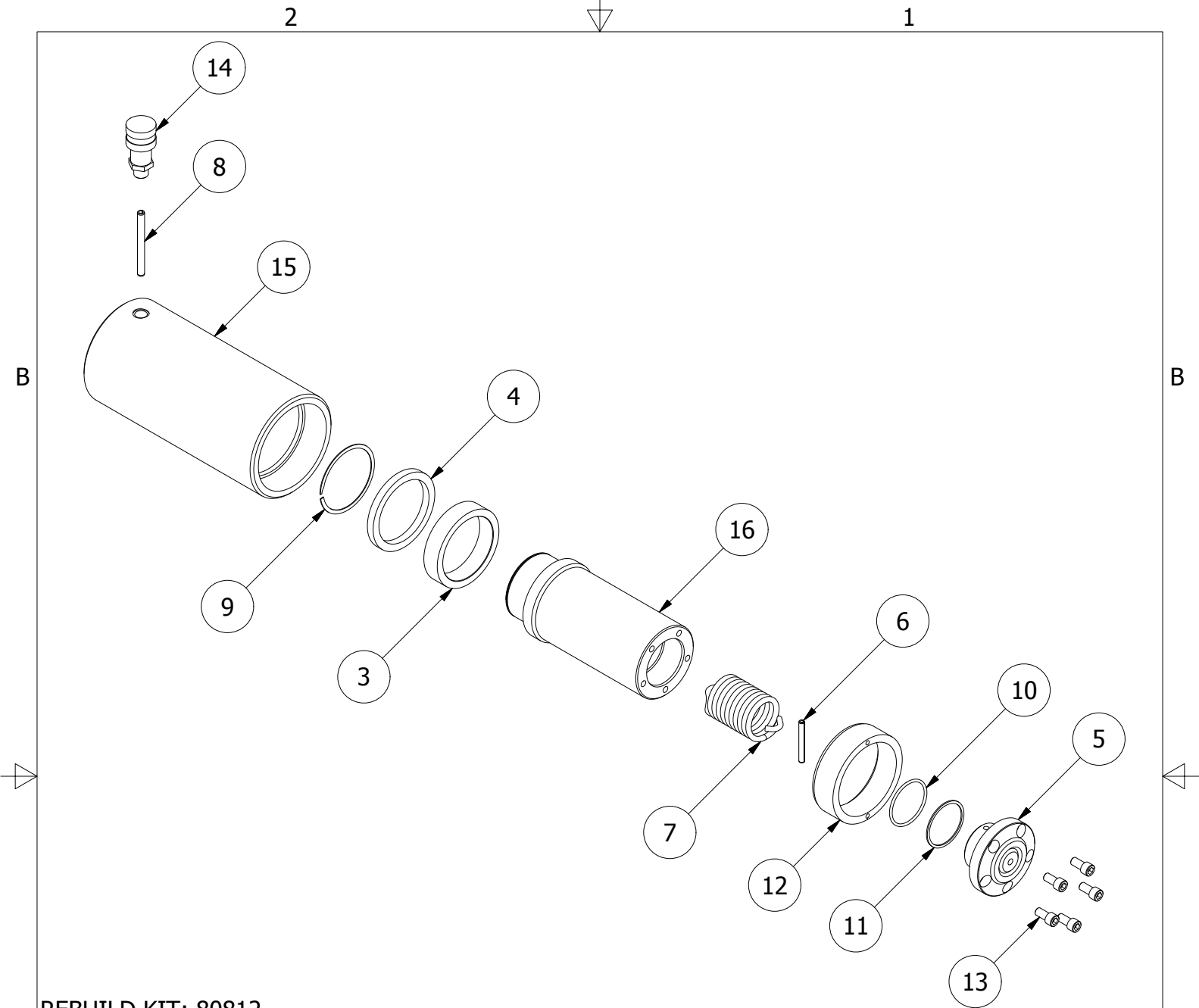
**TITLE: 60 TON 6 IN STROKE CYL**

**REVISION: -**

**EST WT: 56 LBS**

2

1



REBUILD KIT: 80812

ITEM	QTY	PART NUMBER	DESCRIPTION
3	1	1657-4501	BEARING
4	1	7135-0560	U-CUP
5	1	1657-3700	RAM HEAD
6	1	7908-5095	PIN
7	1	X-9012	EXTENSION SPRING
8	1	2460064	PIN
9	1	7730-3250	RETAINING RING
10	1	7522-7170	O-RING
11	1	7314-1430	BACK-UP WASHER
12	1	1657-2200	PLUNGER GUIDE
13	5	2220237	SHCS 3/8-16 X 3/4
14	1	HA-18	COUPLER W/ DUST COVER
15	1	1657-1306	CYLINDER
16	1	1657-1500-6	PLUNGER (U-CUP STYLE)