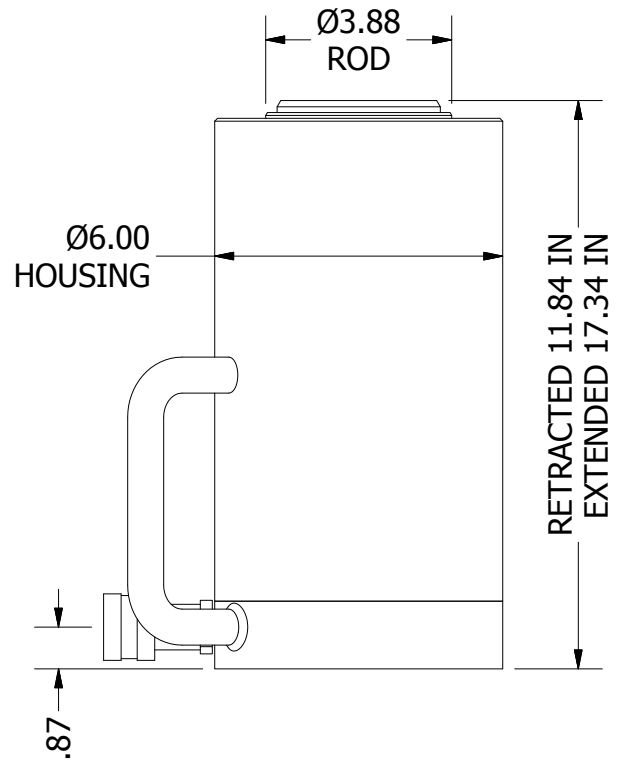
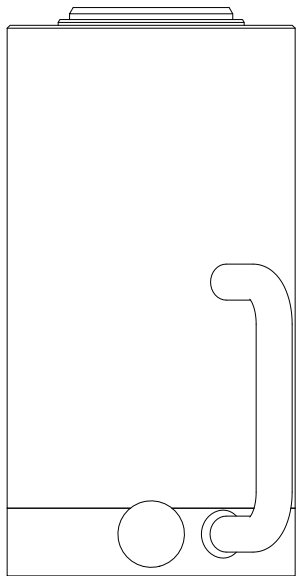
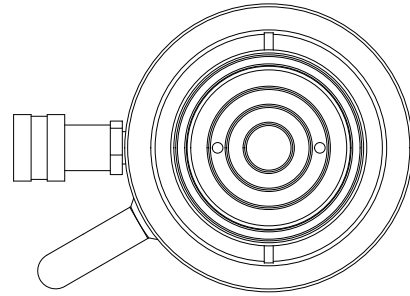


2

1

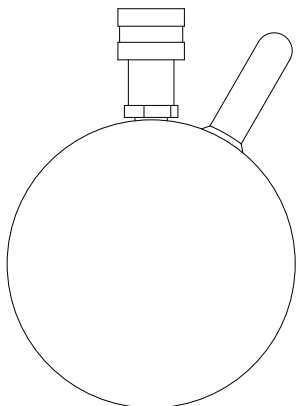
B

B



A

A



2

1

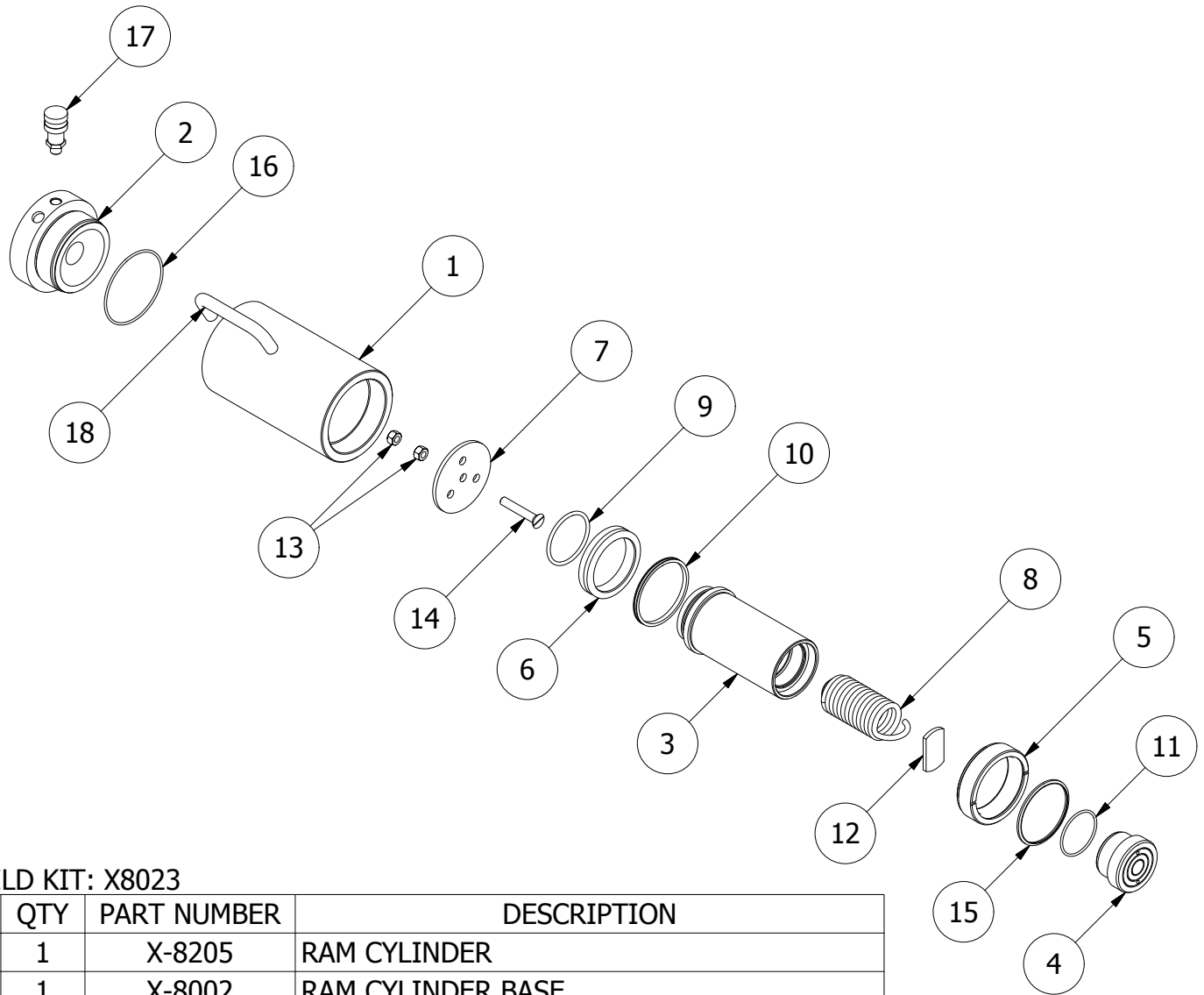
THIS DRAWING IS THE PROPERTY OF RAM-PAC INT'L AND IS NOT TO BE USED IN ANY MANNER DETRIMENTAL TO THEIR INTEREST

RAM-PAC, INT'L.
 15600 W. LINCOLN AVE.
 NEW BERLIN, WI 53151

TITLE: 75 TON 5.5 IN STROKE

REVISION: -

EST WT: 80 LBS



REBUILD KIT: X8023

| ITEM | QTY | PART NUMBER | DESCRIPTION |
|------|-----|-------------|-----------------------------|
| 1 | 1 | X-8205 | RAM CYLINDER |
| 2 | 1 | X-8002 | RAM CYLINDER BASE |
| 3 | 1 | X-8204 | RAM PLUNGER |
| 4 | 1 | X-8203 | RAM PLUNGER HEAD |
| 5 | 1 | X-8186-6 | GLAND NUT |
| 6 | 1 | X-6678-10 | BRONZE WEAR RING |
| 7 | 1 | X-6449-6 | RETURN SPRING PLATE |
| 8 | 1 | X-7776 | PLUNGER RETURN SPRING |
| 9 | 1 | X-6477-15 | O-RING |
| 10 | 1 | X-6437-18 | G.T. RING (PISTION TYPE) |
| 11 | 1 | X-6477-70 | O-RING |
| 12 | 1 | X-6443-8 | SPRING ANCHOR PLATE |
| 13 | 2 | 2350036 | JAM NUT |
| 14 | 1 | X-6466 | FHCS 1/2-13 X 3.00 |
| 15 | 1 | X-6907-11 | WIPER RINGS |
| 16 | 1 | X-6477-71 | O-RING 4.887 X 4.609 X .139 |
| 17 | 1 | HA-18 | COUPLER W/ DUST COVER |
| 18 | 1 | X-6461 | CARRYING HANDLE |